



Bobcat

One Tough Animal

TELEHANDLERS PACKAGES & OPTIONS

PF4 | T40.180SLP & T41.140SLP

🌐 Europe



TERMINOLOGY

STARTLINE

A basic configuration tailored for customers looking for a straightforward machine without additional predispositions. It is ideal for rental companies or anyone in need of an essential. The standard configuration comes with a Stage V, 75 hp engine, no auxiliary line, and a fixed steering column.

Designed to be combined, the Entry, Comfort, and Premium packages can be selected individually or together — allowing users to build the configuration that best fits their needs. Each package adds its own set of features, and combining them provides a cumulative benefit.

POWERLINE

Designed for customers who require greater flexibility and more pre-dispositions for attachments, options, and additional features. The standard configuration includes a Stage V, 100 hp engine, an auxiliary line, and an adjustable steering column.

Designed to be combined, the Entry, Comfort, Premium, Performance, and Tool Carrier packages from the Powerline configuration, offering a flexible setup to meet a wide range of operational needs. Each package adds its own set of features, and combining them provides a cumulative benefit—especially in terms of comfort, performance, and attachment readiness. Users can select one, several, or all five packages, as they are designed to work together seamlessly.

*These packages are available exclusively for the T41.140SLP and T40.180SLP models.



PACKAGES & OPTIONS

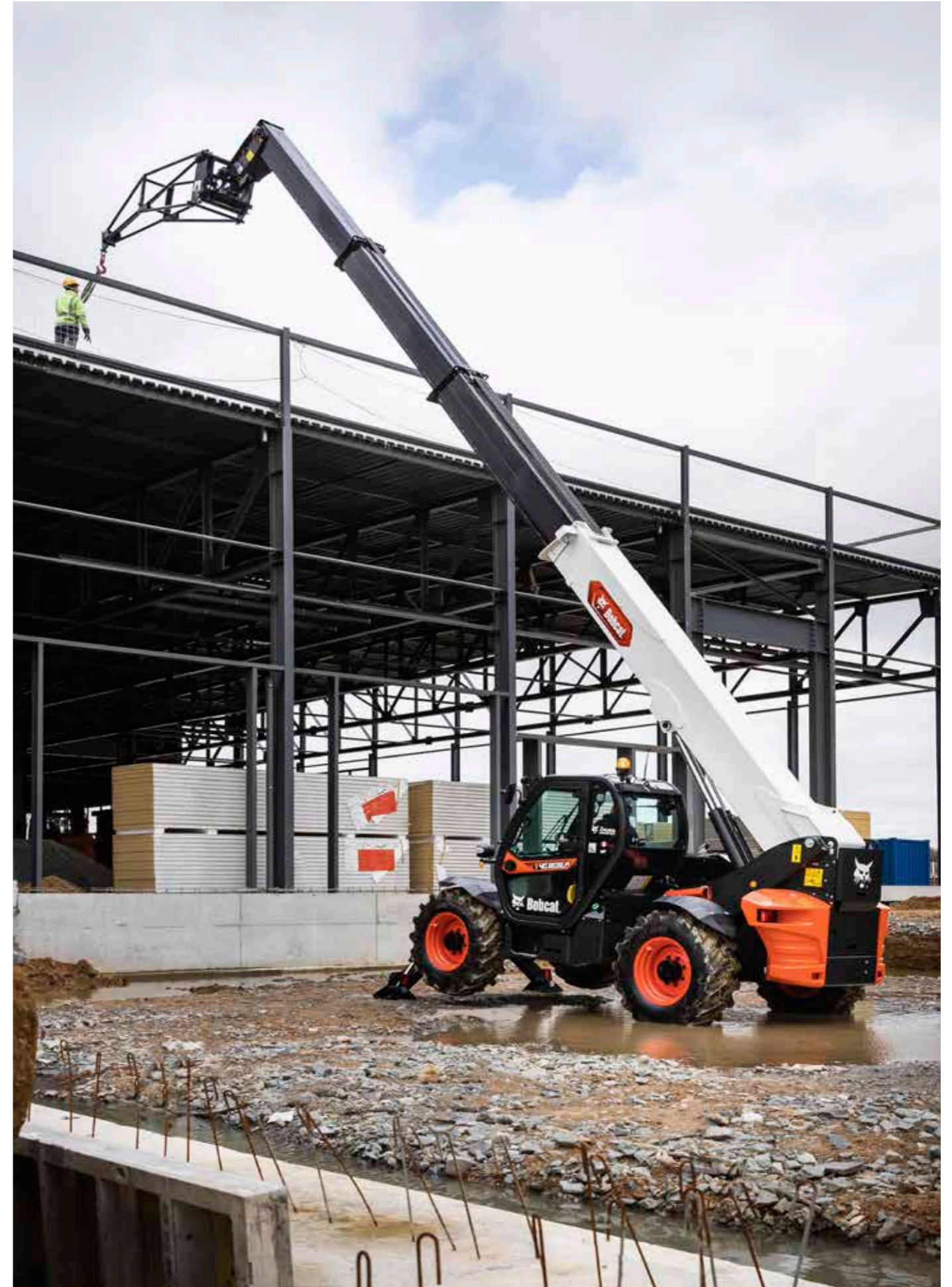
	ENTRY	COMFORT	PREMIUM	PERFORMANCE	TOOL CARRIER
STARTLINE	•	•	•		
POWERLINE	•	•	•	•	•

STARTLINE

STANDARD CONFIGURATION	Stage V engine
	75 hp engine
	No auxiliary line
	Fixed steering column

PACKAGES		
ENTRY	COMFORT	PREMIUM
Protective grill for windshield	Easy greasing (rear axle + steering hubs + lift and compensation cylinders)	Air conditioning (HVAC)
Fire extinguisher	PVC doc holder, phone holder, sun visor, fixed armrest	Air suspension seat
Wheel wedge	White noise back-up alarm	Tool box
		Standard 5" display with Bluetooth radio, microphone & loudspeakers

POPULAR SELECTABLE OPTIONS
Tires
Transmission 20 / 25 km/h
Spec other country / road homologation
Specific colors and decals
Hydraulic lock + AUX
Lockable fuel and AdBlue caps
Rotating tow with rear mirror / basic tow hitch with rear mirror
Rear video camera
Work light LED on cab / boom / rear
Support for registration plate
Halogen work lights on boom
A wider range of selectable options is available on iStore

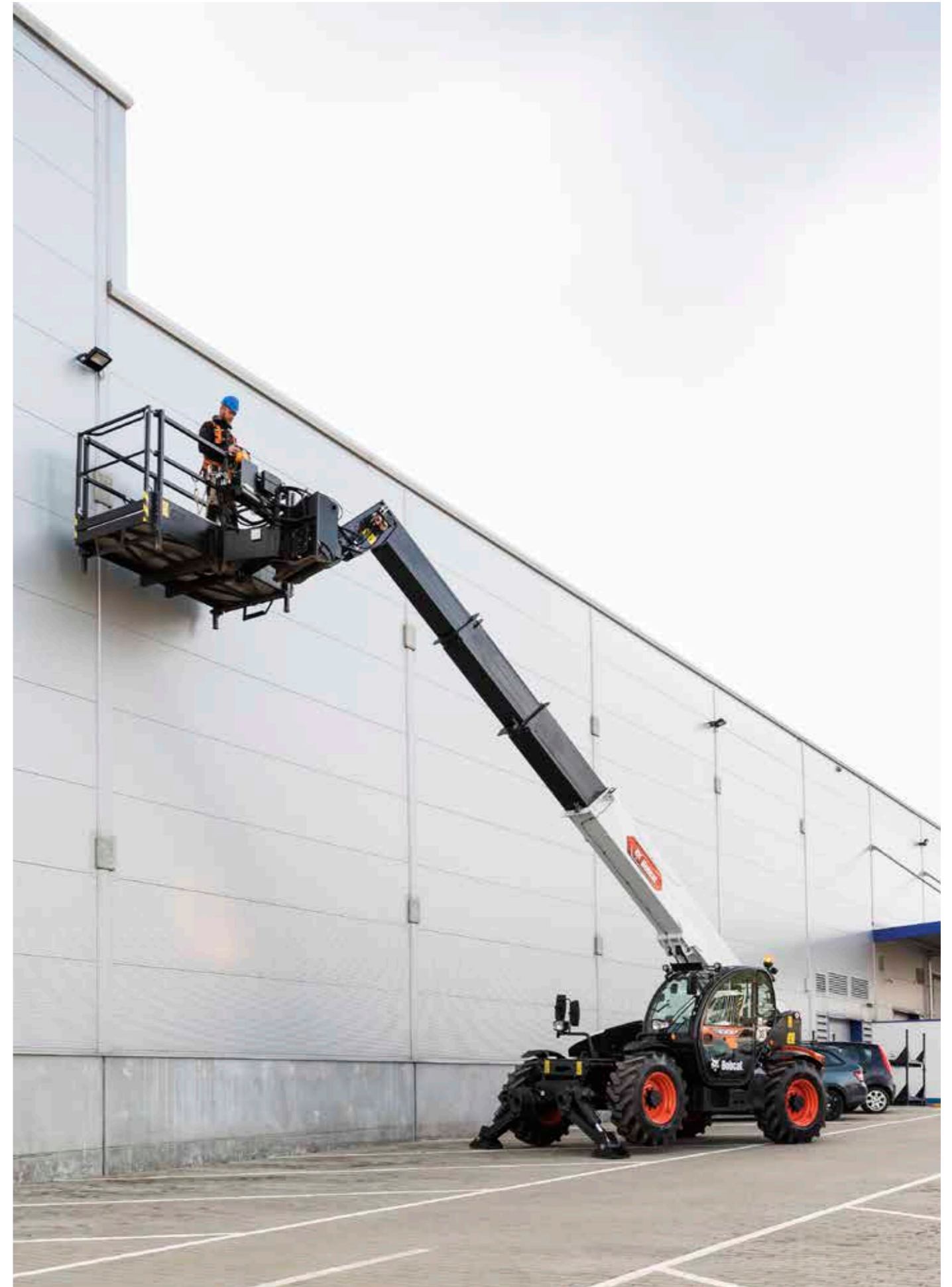


POWERLINE

STANDARD CONFIGURATION	Stage V engine
	100 hp engine
	With auxiliary line
	Adjustable steering column

PACKAGES				
ENTRY	COMFORT	PREMIUM	PERFORMANCE	TOOL CARRIER
Protective grill for windshield	Easy greasing (rear axle + steering hubs + lift and compensation cylinders)	Air conditioning (HVAC)	Reverse fan (manual & auto)	Man-platform ready (remote control system and boom wiring harness mandatory)
Fire extinguisher	PVC doc holder, phone holder, sun visor, fixed armrest	Air suspension seat	Hand throttle and flex drive	Winch ready (boom wiring harness mandatory)
Wheel wedge	White noise back-up alarm	Tool box		
		Standard 5" display with Bluetooth radio, microphone & loudspeakers		

POPULAR SELECTABLE OPTIONS
Tires
Transmission 20 / 25 / 30 km/h
Spec other country / road homologation
Specific colors and decals
Hydraulic lock
Lockable fuel and AdBlue caps
Rotating tow with rear mirror / basic tow hitch with rear mirror
Rear video camera
Remote control system with on-board charger
Work light LED on cab / boom / rear Giro
Support for registration plate
Halogen work lights on boom
A wider range of selectable options is available on iStore



FINANCING OPTIONS

24, 36, OR 48-MONTH FINANCING*

Take advantage of 24, 36, or 48-month financing programs starting from **0% interest** and improve your cash flow.

Ask your dealer about the available financing offers.

340 MACHINES / 150 ATTACHMENT FAMILIES / 1 TOUGH ANIMAL



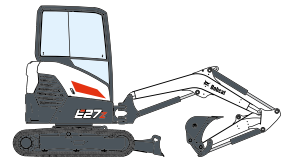
**SKID-STEER
LOADERS**



**COMPACT TRACK
LOADERS**



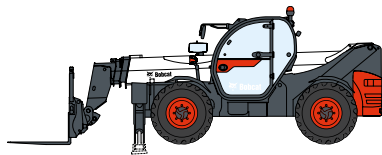
**SMALL ARTICULATED
LOADERS**



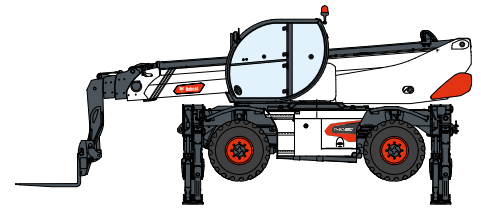
**COMPACT
EXCAVATORS**



FORKLIFTS



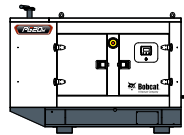
TELEHANDLERS



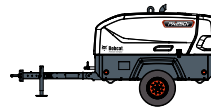
ROTARY TELEHANDLERS



**WAREHOUSE
EQUIPMENT**



GENERATORS



**AIR
COMPRESSORS**



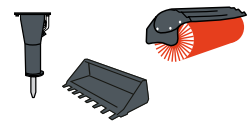
**LIGHT COMPACTION
EQUIPMENT**



**MINI TRACK
LOADER**



MOWERS



ATTACHMENTS



Bobcat

Doosan Bobcat EMEA, U Kodetky 1810, 263 12 Dobříš, Czech Republic

DOOSAN

Bobcat is a Doosan Company. Doosan is a global leader in construction equipment, power & water solutions, engines, and engineering proudly serving customers and communities for more than a century. | Bobcat and the Bobcat logo are registered trademarks of Bobcat Company in the United States and various other countries. ©2025 Bobcat Company. All Rights Reserved.

www.bobcat.com

©2025 BOBCAT B4503500-EN (08-2025)