



**Bobcat**

*One Tough Animal*

# TELEHANDLERS PACKAGES & OPTIONS

PF3 | T35.105L & T36.120SL

🌐 Europe



# TERMINOLOGY

**STARTLINE**

The Startline configuration is designed for customers who prioritize simplicity and functionality. Perfectly suited for rental companies or those seeking a straightforward machine, it features a Stage V, 75 hp engine, no auxiliary line, and a fixed steering column.

The Entry, Comfort, and Premium packages can be used on their own or combined, allowing users to create the configuration that best suits their needs. Each package brings unique features, and combining them enhances the overall performance. Users have the option to select one, 2, or all 3 packages, as they are designed to complement each other seamlessly.

**POWERLINE**

The Powerline configuration caters to customers who need enhanced performance and adaptability for demanding tasks. With a Stage V, 100 hp engine, an auxiliary line, and an adjustable steering column, it is designed to handle more complex requirements while offering greater operational flexibility.

The Entry, Comfort, Premium and Performance packages can be combined or used on their own. This setup is flexible and can meet many different operational needs. Each package adds unique features, and combining them offers even greater benefits — users can choose one, several, or all 4 packages, as they are designed to work perfectly together.

Note: These packages are available exclusively for the T35.105L and T36.120SL models.



# PACKAGES & OPTIONS

	ENTRY	COMFORT	PREMIUM	PERFORMANCE
STARTLINE	•	•	•	
POWERLINE	•	•	•	•

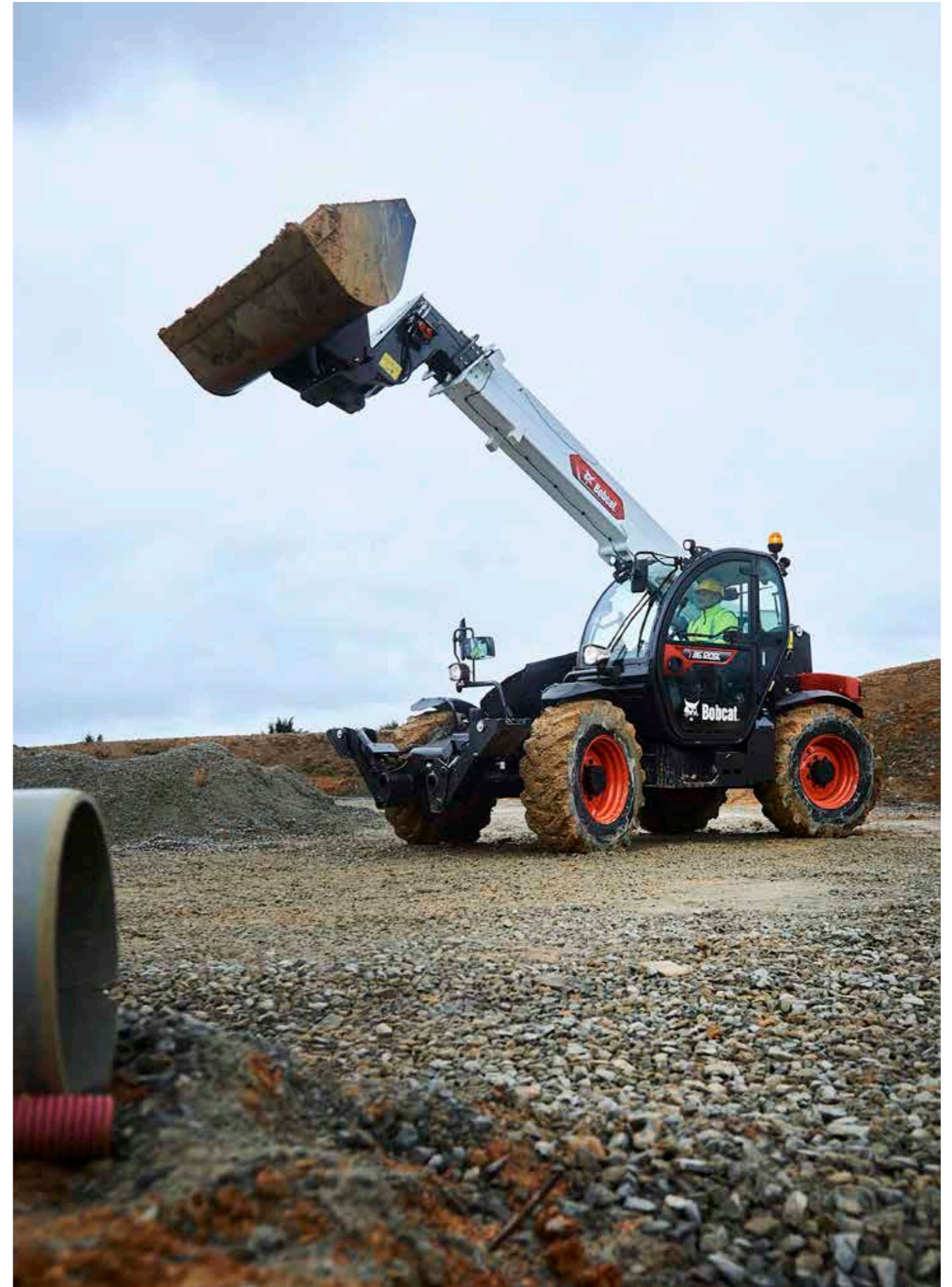


# STARTLINE

<b>STANDARD CONFIGURATION</b>	Stage V engine
	75 hp engine
	No auxiliary line
	Fixed steering column

PACKAGES		
ENTRY	COMFORT	PREMIUM
Protective grill for windshield	Easy greasing (rear axle + steering hubs + lift and compensation cylinders)	Air conditioning (HVAC)
Fire extinguisher	PVC document holder, phone holder, sun visor, fixed arm rest	Air suspension seat
Wheel wedge	White noise back-up alarm	Tool box
		Standard 5" display with Bluetooth radio, microphone & loudspeakers

POPULAR SELECTABLE OPTIONS
Basic option tires – set of 4 x 400/80-24"
Transmission 20 / 25 kph
Spec other country / Road homologation
Specific colors and decals
Hydraulic attachment lock + AUX
Lockable fuel and AdBlue caps
Rotating tow hitch / Basic tow hitch with rear mirror
Rear video camera
LED road pack (road lights + rotating beacon + reversing light)
Support for registration plate
Halogen work light on boom
<b>A wider range of selectable options is available on iStore</b>

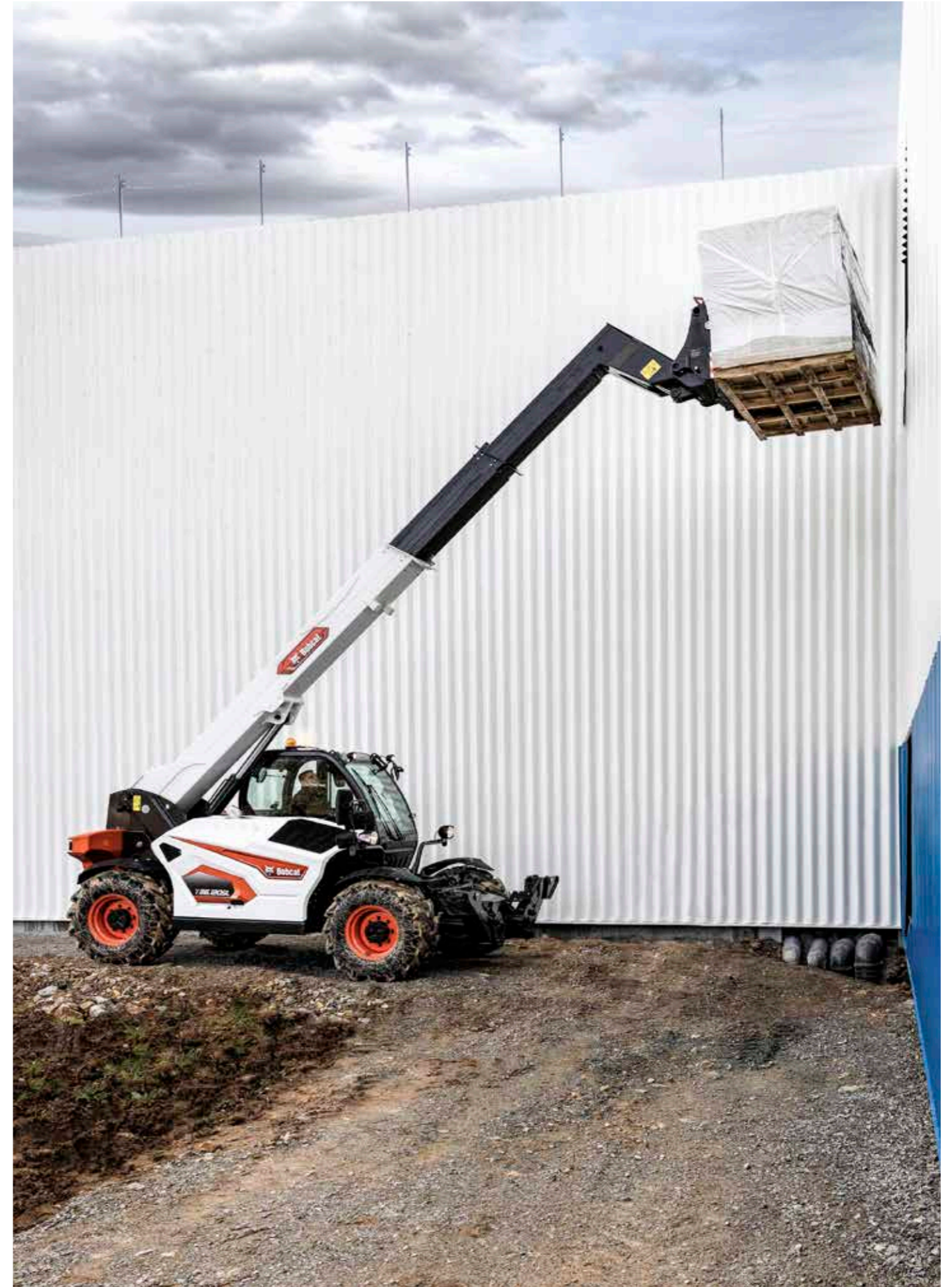


# POWERLINE

<b>STANDARD CONFIGURATION</b>	Stage V engine
	100 hp engine
	With auxiliary line
	Adjustable steering column

PACKAGES			
ENTRY	COMFORT	PREMIUM	PERFORMANCE
Protective grill for windshield	Easy greasing (rear axle + steering hubs + lift and compensation cylinders)	Air conditioning (HVAC)	Reverse fan (Manual & Auto)
Fire extinguisher	PVC document holder, phone holder, sun visor, fixed arm rest	Air suspension seat	Hand throttle and flex drive
Wheel wedge	White noise back-up alarm	Tool box	
		Standard 5" display with Bluetooth radio, microphone & loudspeakers	

POPULAR SELECTABLE OPTIONS
Tires
Transmission 20 / 25 / 30 kph
Spec other country / Road homologation
Specific colors and decals
Hydraulic attachment lock + AUX
Lockable fuel and AdBlue Caps
Rotating tow hitch / Basic tow hitch with rear mirror
Rear video camera
Remote control system with on-board charger
LED road pack (road lights + rotating beacon + reversing light)
Support for registration plate
Halogen work light on boom
Front hydraulic auxiliary with valve & 2 boom harnesses
<b>A wider range of selectable options is available on iStore</b>



# FINANCING OPTIONS

## 24, 36, OR 48-MONTH FINANCING\*

Take advantage of 24, 36, or 48-month financing programs starting from **0% interest** and improve your cash flow.

Ask your dealer about the available financing offers.

**340** MACHINES / **150** ATTACHMENT FAMILIES / **1** TOUGH ANIMAL



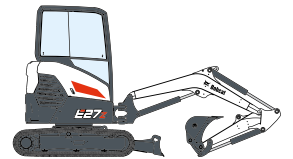
**SKID-STEER  
LOADERS**



**COMPACT TRACK  
LOADERS**



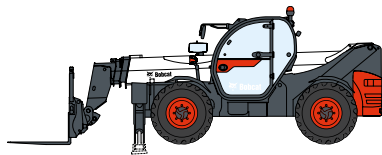
**SMALL ARTICULATED  
LOADERS**



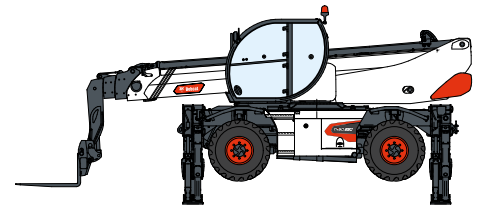
**COMPACT  
EXCAVATORS**



**FORKLIFTS**



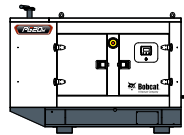
**TELEHANDLERS**



**ROTARY TELEHANDLERS**



**WAREHOUSE  
EQUIPMENT**



**GENERATORS**



**AIR  
COMPRESSORS**



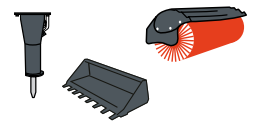
**LIGHT COMPACTION  
EQUIPMENT**



**MINI TRACK  
LOADER**



**MOWERS**



**ATTACHMENTS**



**Bobcat**

Doosan Bobcat EMEA, U Kodetky 1810, 263 12 Dobříš, Czech Republic

**DOOSAN**

**Bobcat is a Doosan Company.** Doosan is a global leader in construction equipment, power & water solutions, engines, and engineering proudly serving customers and communities for more than a century. | Bobcat and the Bobcat logo are registered trademarks of Bobcat Company in the United States and various other countries. ©2025 Bobcat Company. All Rights Reserved.

[www.bobcat.com](http://www.bobcat.com)

©2025 BOBCAT B4503570-EN (10-25)