



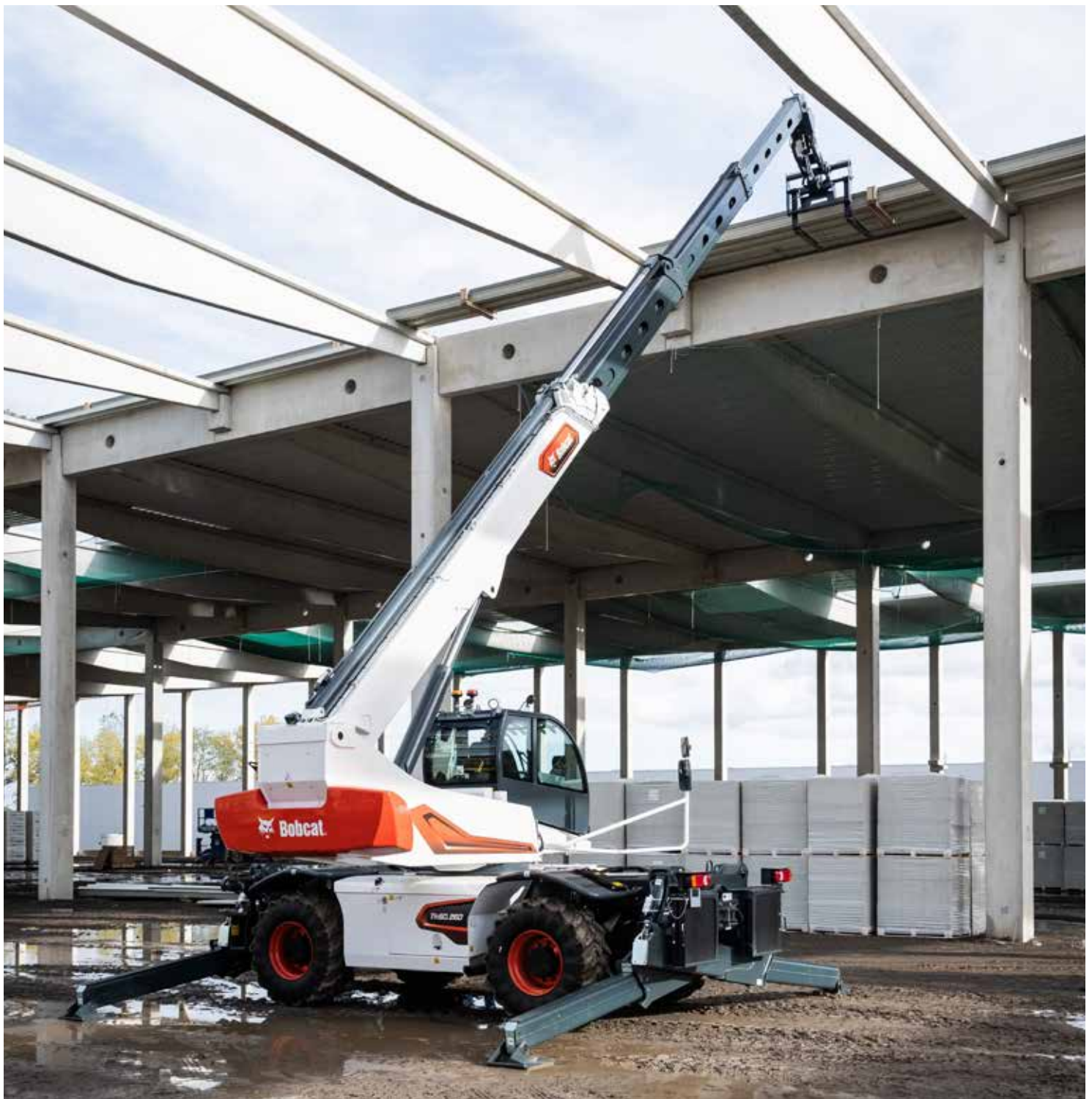
Bobcat

One Tough Animal

ROTARY TELEHANDLERS

TR-Series

🌐 Europe



INTRODUCTION

**ONE
TOUGH
ANIMAL**



BOBCAT'S HISTORY

In 1958, the Melroe Manufacturing Company introduced a compact front-end loader that quickly evolved into the M400, the world's first true skid-steer loader. The company soon adopted what became the world famous "Bobcat" brand — and its success paved the way for the global compact equipment industry we see today.

NEVER-ENDING INNOVATION

Today, Bobcat's EMEA headquarters in Dobříš, Czech Republic, serves as a hub for innovation. Here, a manufacturing plant produces around 25,000 machines annually for EMEA customers and global export. The site is also home to the Bobcat Innovation Centre, where rigorous testing and product development take place using advanced facilities like climate and anechoic chambers.



BOBCAT TODAY

With over 60 years of manufacturing experience and a commitment to ongoing innovation, Bobcat has delivered millions of machines to the market. Known for their high performance, reliability, and unparalleled comfort, the diverse lineup caters to various applications. Whether it's landscaping, snow removal, construction, demolition, or roadwork, Bobcat machines empower users to accomplish more.



OUR MISSION

We empower operators to accomplish more, while working in the toughest conditions and tightest situations. When our customers have the will, we provide the way.

BUILT TO PERFORM AT 360°

► POWERFUL AND STABLE

By adding cutting-edge technology to Bobcat's Rotary Telehandlers, we have created the ultimate tool for even the most complex handling jobs. Working at height has never been so efficient, comfortable and safe.



R.F.ID automatic attachment recognition system

A wide range of attachments to excel in handling, lifting, and people elevation

High-tensile steel boom structure with hoses protected inside

Combined hydraulic functions (load sensing pump with flow sharing)

Cab certified FOPS & ROPS

24V electric system IP67 rated & CAN-Bus system

Pressurized cab & 100% air filtration

360° continuous rotation turret

Control panel with large touchscreen & jog shuttle

New spacious cab offers enhanced comfort features and improved access with anti-slip steps

Telematic system

Air conditioner as standard

Oscillating rear axle with self-hydraulic locking

Frame levelling +/- 8°

Automatic engine speed adjustment to supply hydraulic power required

Powerful variable hydrostatic transmission with heavy-duty oil immersed axles

3 steering modes with semi-automatic realignment

Smart stabilizers with a range of advanced features including low ground pressure, auto-leveling, load chart adjusted to stabilizer extensions, stabilization area memorized, and retraction cushioning

Automatic parking brake



► A NEW LEVEL OF PRODUCTIVITY

Unlock unparalleled productivity with our Rotary Telehandlers. Enhanced capabilities, a new touchscreen display, and overall versatility allow you to do more every day.

P 8



► WORK WITH EASE

Experience elevated comfort with our Rotary Telehandlers. The redesigned cab offers a sleek design, ample space, and convenient features for an even better operator experience.

P 20



► SAFETY FIRST

Enjoy a safer working environment with multilingual warning banners, an automatic rear camera display when in reverse and tire leveling feature.

P 19



► STAY PRODUCTIVE

Boost uptime with our Rotary Telehandlers. Featuring improved fuse access and diagnostic socket accessibility, these machines allow for quick and hassle-free maintenance.

P 9

PERFORMANCE

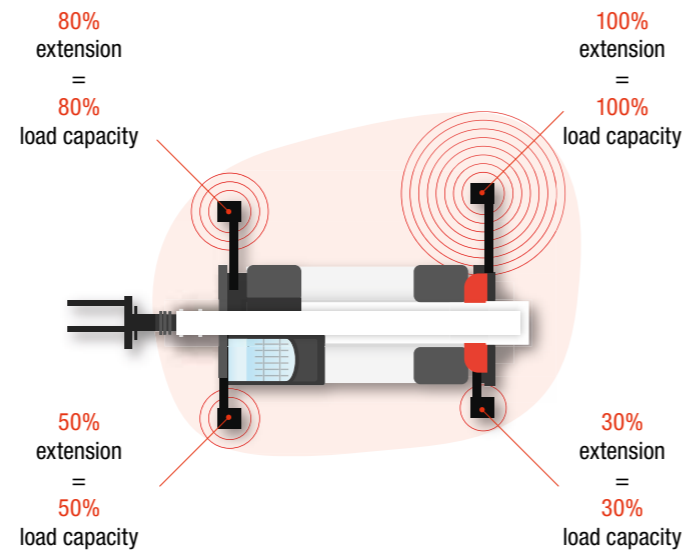
▶ INTELLIGENT STABILIZATION

Optimized stabilization performance is achieved thanks to ground pressure detection, one-button auto-leveling, and a self-adapting working envelope to independently set the lifting capacity of each stabilizer.



▶ SMART OPERATING

From the moment it starts moving, the machine's electronic management takes control, automatically adjusting the engine speed and the load-sensing hydraulic system. This allows you to focus on your top priority: safely performing your job with absolute precision.



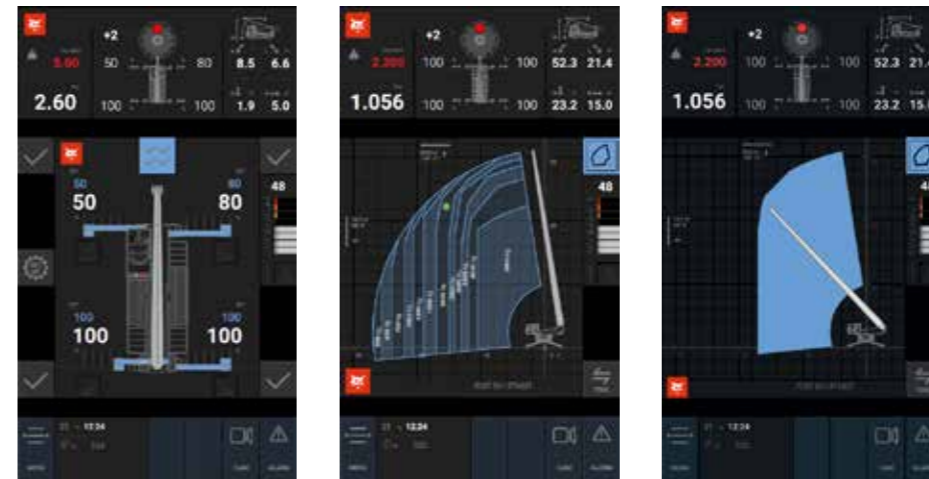
▶ FRAME LEVELLING ON TIRES

Achieve greater stability on diverse terrains with our standard tire leveling system. This intelligent feature detects machine inclination and allows compensation only in the correct direction, reducing the risk of making things worse. Count on this reliable feature for enhanced operator safety and machine stability.



▶ NEW LOADCHARTS

Experience a new level of productivity with an updated overview of your machine and its functions displayed conveniently on your in-cab display. Choose from a variety of loadcharts that provide real-time information about the handled load, position of the stabilizers, safe working area, and more.



READ MORE INFORMATION ABOUT THE UPDATED LOADCHARTS ON PAGE 19

UNBEATABLE CAB EXPERIENCE



► FIRST-CLASS COMFORT

Step into our modernized cab that offers advanced features, including an air-filtered and pressurized environment for optimal operator comfort. With spacious interiors, convenient access, and well-positioned LED lights, our machines deliver the best performance without compromising comfort.



► PANORAMIC PERFECTION



Enhance the operator experience with our extended Ultrawide Panoramic Windscreen, offering an expansive view for improved visibility.

► COMFORT COMES STANDARD



Get superior comfort with our standard headrest and ergonomic seat, ensuring operators remain comfortable even during extended work hours.

► INTUITIVE OPERATION



Stabilization and frame leveling controls are grouped together on the console along the side window.

*except TR50.180

SAFETY

► CUSTOMIZED CONTROL

Take command of your job site with our advanced safety features. Our machines empower operators to define virtual barriers, limiting both working zones and speeds. This cutting-edge technology ensures maximum control of your machine.



► SAFETY FOR ALL

Enhance communication and safety on your job site with our advanced warning banners. Displayed in 14 languages, these banners ensure that crucial safety information is accessible to every operator, promoting a secure and inclusive work environment.



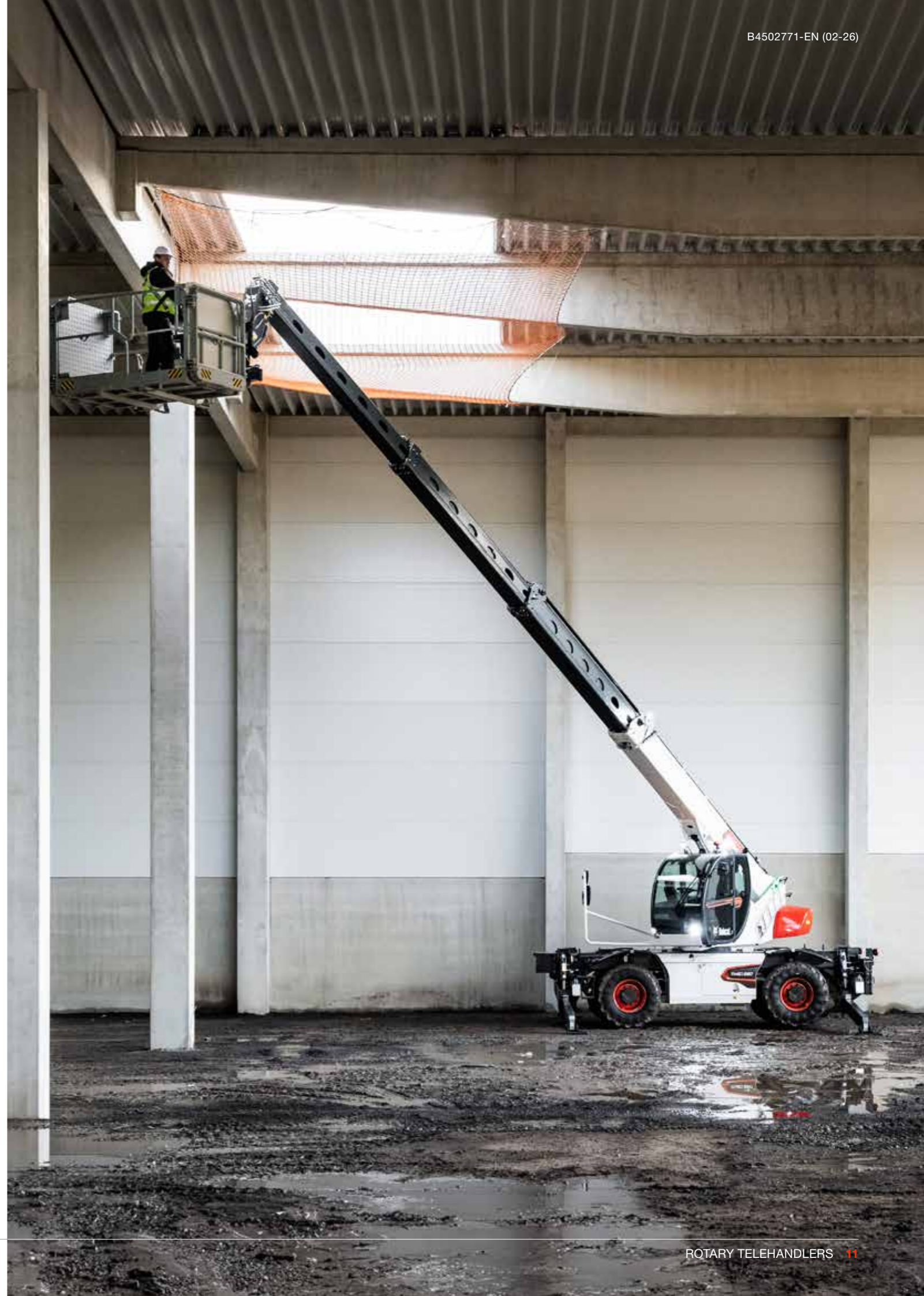
► STREAMLINED OPERATIONS

Ensure a safer and more convenient work environment by opting for the automatic activation of the rearview camera when traveling in reverse. This smart feature enhances visibility and streamlines operations.



► SAFETY ON ANY TERRAIN

Experience maximized stability, thanks to our automatic tire leveling feature. This feature prevents any actions leading to potential rollovers, prioritizing operator safety in challenging terrains.



STRONG AND RELIABLE

► BUILT TO LAST

Designed to withstand the toughest construction jobs, our equipment features a welded monobloc frame, hydraulic hoses fully enclosed within the boom, and heavy-duty axles. Constructed from high-tensile steel, the boom is exceptionally sturdy and rigid while remaining lightweight, bolstering load capacity and minimizing flex.

► PROTECTED FROM ELEMENTS

The 24V electric circuit is protected with IP67-rated shielding against water and dust. Additionally, Bobcat's CAN BUS technology reduces wiring for enhanced reliability.



A MACHINE THAT WORKS WITH YOU. A BRAND THAT STANDS BEHIND YOU.

Buying a Bobcat isn't just a purchase — it's peace of mind. From day one to the final hour, we're with you.



BOBCAT WARRANTY

COVERAGE THAT HAS YOUR BACK

Every new Bobcat comes with built-in confidence — and the option to go even further.

- ✓ 2 years / 2 000 hours of standard coverage
- ✓ Protection Plus: Up to 4 years / 5 000 hours



MACHINE IQ

STAY IN CONTROL — EVEN FROM A DISTANCE

Track your machine's performance, location, fuel level, and health in real time from your phone or computer thanks to Machine IQ, with a Standard plan now free with new machines.



ATTACHMENTS

ONE MACHINE, MANY JOBS

Your Bobcat is more than a machine — it's your all-in-one solution. From loading to drilling to cleanup, swap tasks in seconds.

- ✓ Pre-selected kits for easier setup
- ✓ Quick changes with Bob-Tach® or common industry interface (CII)



SERVICE

SERVICE THAT KEEPS YOU MOVING

Bobcat-authorized service means your machine gets expert care — fast. Regular checks, genuine parts, minimal downtime. And support that's always close by.



GENUINE PARTS

GUARANTEED PERFORMANCE.

Perfect fit, lasting performance, longer machine life. With genuine Bobcat parts, every start is reliable, and every action precise.

- ✓ Wide partner network
- ✓ 96% of parts delivered within 48 hours



BOBCAT CERTIFIED

BACKED TO HOLD VALUE

A well-maintained Bobcat keeps its edge — and its worth. With Bobcat Certified, your machine stays recognised, trusted, and ready for the next owner.

BOBCAT. RELIABILITY THAT LASTS LONGER.

CHOOSE YOUR ANIMAL

PIVOTING STABILIZERS

► SIMPLY EFFECTIVE

Find the perfect machine among 3 models with easy-to-deploy stabilizers, lifting heights between 18–25 m, and a maximum lifting capacity of 5 tons.

► AVAILABLE MODELS

- TR50.180
- TR50.210
- TR50.250



SCISSOR STABILIZERS

► CUSTOMIZED STABILIZATION

Choose from 6 models featuring powerful, versatile telescopic scissor stabilizers with higher ground clearance, enabling lifting heights ranging from 22 to 39 meters and a maximum lift capacity between 6 and 8 tons. The stabilizers offer various types of stabilization, including compact, partial, or full (to achieve the maximum working envelope), and come with load charts adapted to the position of each stabilizer.

► AVAILABLE MODELS

- TR60.220
- TR60.260
- TR60.310
- TR80.270
- TR80.350
- TR80.390



STANDARD EQUIPMENT & OPTIONS

	TR50.180	TR50.210	TR50.250	TR60.220	TR60.260	TR60.310	TR80.270	TR80.350	TR80.390
FRAME AND TELESCOPIC BOOM									
Quick fit carriage with manual attachment lock	✓	✓	✓	✓	✓	✓	✓	✓	✓
Rear view camera	✓	✓	✓	✓	✓	✓	✓	✓	✓
Pallet fork frame floating, 1.3 m wide, forks included	✓	✓	✓	✓	✓	✓	✓	✓	✓
Auxiliary hydraulic line on boom head and return line to hydraulic tank	✓	✓	✓	✓	✓	✓	✓	✓	✓
Automatic RFID tools recognition system	✓	✓	✓	✓	✓	✓	✓	✓	✓
Man platform ready and electric emergency pump	✓	✓	✓	✓	✓	✓	✓	✓	✓
Winch ready	✓	✓	✓	✓	✓	✓	✓	✓	✓
Heavy duty axles with epicyclic reduction gears, oil immerse brakes	✓	✓	✓	✓	✓	✓	✓	✓	✓
Rear axles oscillating and steering with hydraulic locking	✓	✓	✓	✓	✓	✓	✓	✓	✓
Towing hook	✓	✓	✓	✓	✓	✓	✓	✓	✓
Frame leveling +/- 8°	✓	✓	✓	✓	✓	✓	✓	✓	✓
Complete road lights (front & rear)	✓	✓	✓	✓	✓	✓	✓	✓	✓
Right and left side mirrors	✓	✓	✓	✓	✓	✓	✓	✓	✓
CABIN AND MAIN FUNCTIONS									
Cabin with full glass window door	✓	✓	✓	✓	✓	✓	✓	✓	✓
Full tinted glass	✓	✓	✓	✓	✓	✓	✓	✓	✓
Pressurized cab, 100% air filtration	✓	✓	✓	✓	✓	✓	✓	✓	✓
ROPS/FOPS operator cabin	✓	✓	✓	✓	✓	✓	✓	✓	✓
Automatic parking brake	✓	✓	✓	✓	✓	✓	✓	✓	✓
Roof window wiper	✓	✓	✓	✓	✓	✓	✓	✓	✓
Front wipers with washer	✓	✓	✓	✓	✓	✓	✓	✓	✓
Rotating beacon	✓	✓	✓	✓	✓	✓	✓	✓	✓
Adjustable steering column	✓	✓	✓	✓	✓	✓	✓	✓	✓
Heating, demisting and ventilation	✓	✓	✓	✓	✓	✓	✓	✓	✓
Air conditioning (HVAC)	✓	✓	✓	✓	✓	✓	✓	✓	✓
Back-up alarm	✓	✓	✓	✓	✓	✓	✓	✓	✓
Bluetooth radio, microphone & loudspeakers	✓	✓	✓	✓	✓	✓	✓	✓	✓
Mechanical suspension seat	✓	✓	✓	✓	✓	✓	✓	✓	✓
7" touch screen	✓	✓	✓	–	–	–	–	–	–
12" touch screen	–	–	–	✓	✓	✓	✓	✓	✓
Jog shuttle	✓	✓	✓	✓	✓	✓	✓	✓	✓
Two multifunctional joysticks with proportional controls and forward/reverse drive	✓	✓	✓	✓	✓	✓	✓	✓	✓
Load moment control system with dynamic load chart on touchscreen display	✓	✓	✓	✓	✓	✓	✓	✓	✓
Auto idle	✓	✓	✓	✓	✓	✓	✓	✓	✓
Autoleveling system on stabilisers	✓	✓	✓	✓	✓	✓	✓	✓	✓
3 steering modes (2WS / 4WS / CRAB) with semi-automatic wheel realignment	✓	✓	✓	✓	✓	✓	✓	✓	✓
Rear axle lock indicator	✓	✓	✓	✓	✓	✓	✓	✓	✓
Front and rear wheels alignment indicator	✓	✓	✓	✓	✓	✓	✓	✓	✓
24 V Electric socket	✓	✓	✓	✓	✓	✓	✓	✓	✓
CAN Bus technology with auto-diagnostic system	✓	✓	✓	✓	✓	✓	✓	✓	✓

• = option ✓ = standard – = not available

	TR50.180	TR50.210	TR50.250	TR60.220	TR60.260	TR60.310	TR80.270	TR80.350	TR80.390
CABIN AND MAIN FUNCTIONS									
Load sensing piston pump 90 l/min at 350 bar	✓	–	–	–	–	–	–	–	–
Load sensing piston pump 105 l/min at 350 bar	–	✓	✓	–	–	–	–	–	–
Load sensing piston pump 130 l/min at 350 bar	–	–	–	✓	✓	–	–	–	–
Load sensing piston pump 160 l/min at 350 bar	–	–	–	–	–	✓	✓	✓	✓
Electro proportional main valve with flow sharing	✓	✓	✓	✓	✓	✓	✓	✓	✓
Continuous rotation (360°)	✓	✓	✓	✓	✓	✓	✓	✓	✓
High precision slewing drive	–	–	–	✓	✓	✓	✓	✓	✓
Hydrostatic transmission with electronically controlled variable displacement pump; variable displacement motor 2-speed gear box (turtle/rabbit)	✓	✓	✓	✓	✓	✓	✓	✓	✓
25 km/h max drive speed	✓	–	–	–	–	–	–	–	–
40 km/h max drive speed	–	✓	✓	✓	✓	✓	✓	✓	✓
Standard tyres — set of 4 × 445/65 R19,5"	✓	–	–	–	–	–	–	–	–
Standard tyres — set of 4 × 445/65 R22,5"	–	✓	✓	✓	✓	✓	✓	✓	✓
Turbo-charged engine — Deutz TCD 3.6 L4 Stage V — 75 hp / 405 Nm	✓	–	–	–	–	–	–	–	–
Turbo-charged engine — Deutz TCD 3.6 L4 Stage V — 136 hp / 500 Nm	–	✓	✓	✓	✓	–	–	–	–
Turbo-charged engine — Volvo TAD 582 VE Stage V — 218 hp / 925 Nm	–	–	–	–	–	✓	✓	–	–
Turbo-charged engine — Volvo TAD 583 VE Stage V — 238 hp / 975 Nm	–	–	–	–	–	–	–	✓	✓
Battery disconnection (inside engine compartment)	✓	✓	✓	✓	✓	✓	✓	✓	✓
2 year warranty or 2 000 hours (refer to the Bobcat standard warranty policy for terms and conditions)	✓	✓	✓	✓	✓	✓	✓	✓	✓
Telemetry system	✓	✓	✓	✓	✓	✓	✓	✓	✓

• = option ✓ = standard – = not available

PERSONALIZE YOUR MACHINE

We all want to add a specific functionality or a personal touch to our machine. Choose from a comprehensive list of options and customize your Rotary Telehandler until your heart's content!



Front view camera

Rear view camera

Remote control with display

Camera display

Hydraulic attachment lock

High comfort air suspension seat with headrest



LED work lights

Stabilizers' plastic pads

Ladder

Wheel wedges

Sun visor

Radio DAB

VERSATILITY

▶ THE CAPABILITY TO DO MORE

Get more efficiency with Bobcat attachments, maximizing the versatility of Bobcat Rotary Telehandlers designed to excel in handling, lifting, and personnel elevation.

▶ PALLET FORKS



Floating pallet fork frames



Rotating pallet fork frame

▶ BUCKETS



General purpose buckets



Waste bucket

▶ HOOKS, JIBS, WINCHES



Crane jibs



Winches



Extension jibs



Jibs with winch

▶ SPECIAL APPLICATIONS



Extendable rotating platform equipped with a winch



Roofer Extendable rotating platform



Extendable rotating platform



Rib handler



ADVANCED CONTROLS



SMART AND INTUITIVE

Easily monitor and manage vital functions on the large touchscreen, included as standard. Seamlessly navigate through five menu pages using touch controls or the jog shuttle.

DRIVE PAGE



Choose the appropriate steering control and monitor vital speed and engine information.

STABILIZATION PAGE



Effortlessly control all four stabilizers simultaneously or independently and check their positions at a glance. With the automatic leveling system, setup is quick and easy once they make contact with the ground.

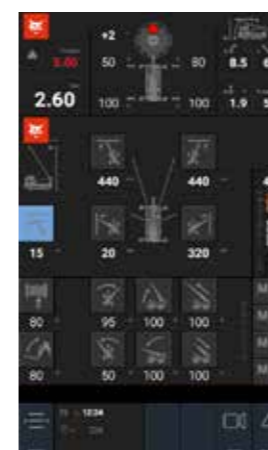
WORK PAGE



The work page displays the paired attachment, which is automatically recognized by the R.F.ID system. A dynamic load chart shows the load moving along with the telescopic boom movements. The operator can quickly read the actual load weight and check the maximum lifting capacity in this position.



LIMIT PAGE



The limit page allows operators to secure the working area by setting virtual walls on each side, in front, and above. If needed, the operator can also adjust all boom and rotation speeds.

CONTROL PAGE



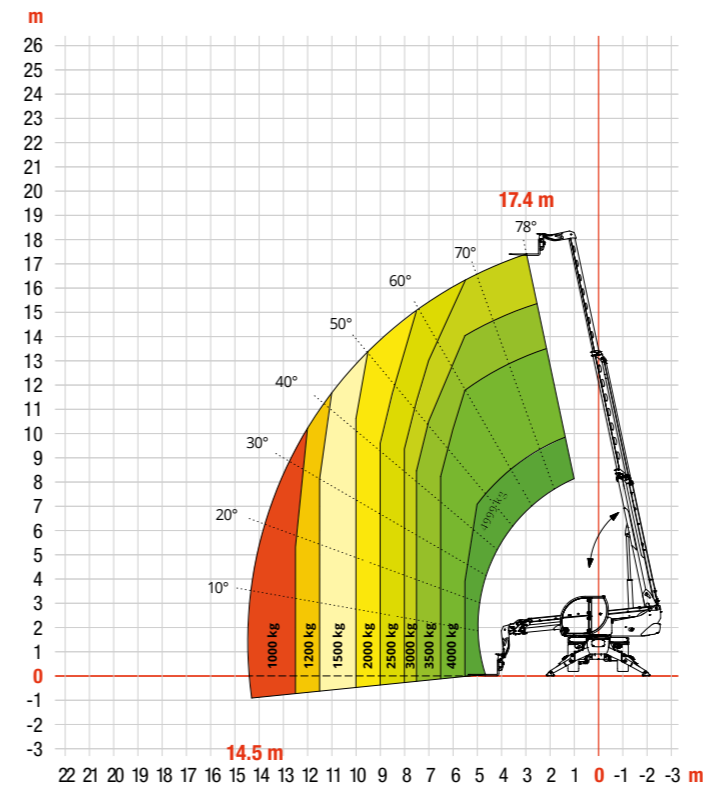
Access all utility controls on 1 screen: ventilation, heating, AC, lights, radio control, turret lock, etc.

SPECIFICATIONS

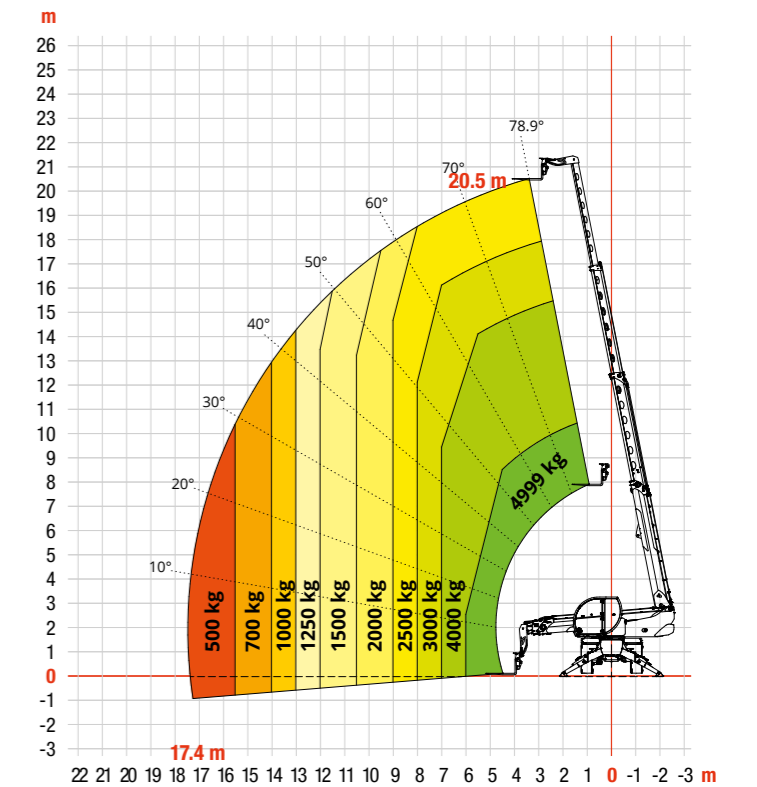
SPECIFICATIONS			
	TR50.180	TR50.210	TR50.250
MACHINE MODEL			
Maximum lifting capacity	4 999 kg (centre of gravity 500 mm)		
Maximum reach	14.5 m	17.4 m	19 m
Maximum lifting height	17.4 m	20.5 m	24.6 m
Rotation	360° (continuous)		
STABILIZERS			
Type	Pivoting stabilizers		
Commands	Independent or combined		
ENGINE			
Type	Deutz TCD 3.6 L4 Stage V		
Rated power	55 kW @ 2 200 rpm	100 kW @ 2 200 rpm	
Maximum torque	405 Nm @ 1 300 rpm	500 Nm @ 1 600 rpm	
Displacement	3.6 l		
Cylinders	4 in line		
Engine configuration	Turbocharged direct injection diesel		
Cooling system	Water — Intercooler		
Numbers of batteries	2 × 12 V		
Battery type	SHD		
Batteries capacity	1 200 A-190 Ah		
TRANSMISSION			
Type	Hydrostatic		
Model	Danfoss / Rexroth		
Maximum pressure	480 bar		
Displacement	Electronically controlled variable displacement pump, variable displacement motor		
Gearbox	Dropbox, 2 speeds forward-reverse		
AXLES AND BRAKES			
Type	Axles with planetary gearboxes		
Front axle	Oscillating, steering with levelling +/- 8°		
Rear axle	Oscillating and steering with hydraulic locking		
Numbers of steering wheels	4WS		
Steering types	2WS / 4WS / Crab		
Service brake	Hydraulically operated wet multi-disk brakes on each axle		
Parking brake	Hydraulic with negative action		
Tyre sizes	445/65 R19.5	445/65 R22.5	
PERFORMANCE			
Max. travel speed	25 km/h	40 km/h	
Drawbar pull	51 kN	72 kN	
Gradeability	51%	45%	
Turning circle (at forks)	6 060 mm	5 780 mm	
WEIGHTS			
Total unladen	14 400 kg	15 900 kg	
Front axle unladen (boom retracted and lowered)	6 300 kg	8 800 kg	
Rear axle unladen (boom retracted and lowered)	8 100 kg	7 100 kg	
TANK AND SYSTEM CAPACITIES			
Diesel fuel tank	175 l		
AdBlue	-		10 l
Hydraulic fluid	165 l		
Engine oil	9 l		
Cooling liquid	20 l		
HYDRAULIC CIRCUIT FOR MOVEMENTS			
Circuit type	Load sensing		
Service pump	Variable displacement piston pump	Danfoss / Casappa — Variable displacement	
Max hydraulic capacity	90 l/min	105 l/min	
Max. working pressure	350 bar		
Distributor for boom and turret movements	Danfoss — SIL 2 electro-proportional valve		
Movements control	2 no. two-axis Danfoss joysticks with deadman safety device	2 no. two-axis Danfoss joysticks with deadman safety device, managed via CAN bus	

LOADCHARTS

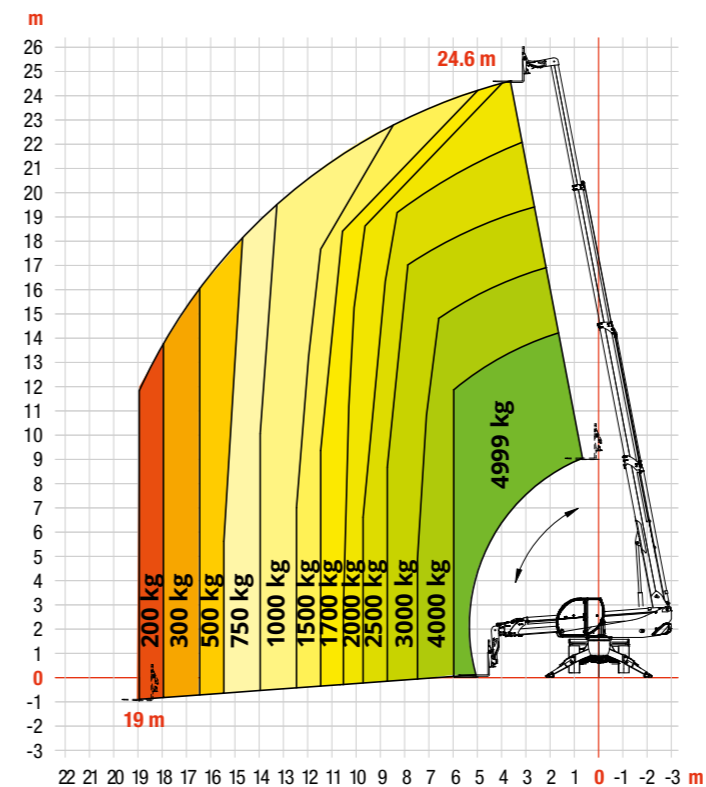
TR50.180



TR50.210



TR50.250

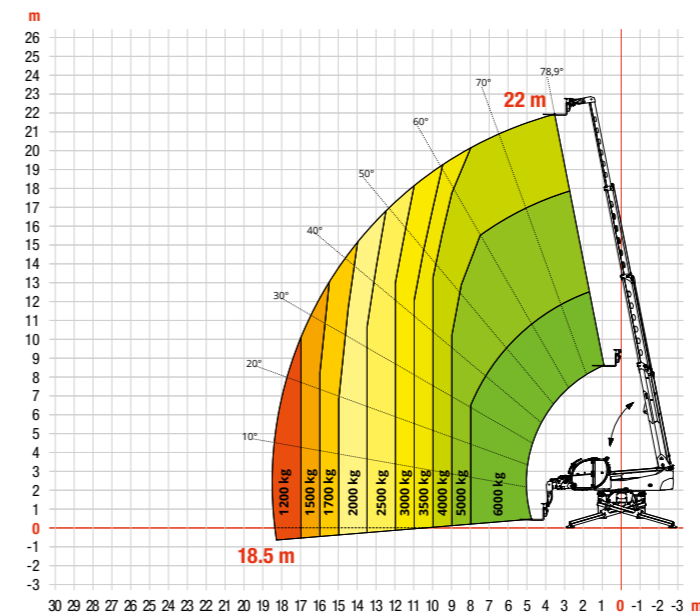


Load charts with load centre at 500 mm up to 4 999 kg rated capacity and 600 mm above.

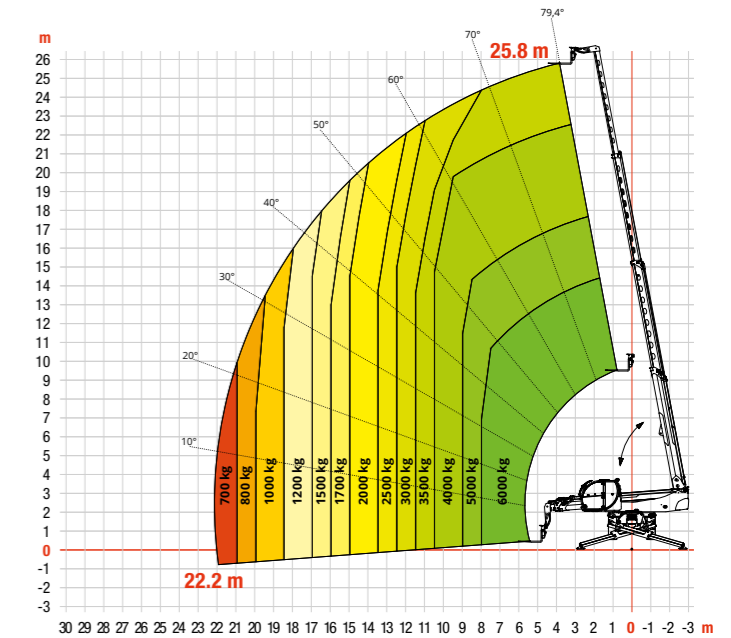
SPECIFICATIONS

SPECIFICATIONS	TR60.220	TR60.260	TR60.310	TR80.270
MACHINE MODEL				
Maximum lifting capacity	6 000 kg			8 000 kg
Maximum reach	18.5 m	22.2 m	26.9 m	23.1 m
Maximum lifting height	22 m	25.8 m	30.8 m	26.6 m
Rotation	360° (continuous)			
STABILIZERS				
Type	Scissor stabilisers with single telescopic extension			
Controls	Independent or combined			
ENGINE				
Type	Deutz TCD 3.6 L4 Stage V		Volvo TAD 582 VE Stage V	
Rated power (kW @ rpm)	100 @ 2 200		160 @ 2 300	
Maximum torque (Nm @ rpm)	500 @ 1 600		925 @ 1 1380	
Displacement	3 620 cm ³		5 130 cm ³	
Cylinders	4 in line			
Engine configuration	Turbocharged direct injection diesel			
Cooling system	Water — intercooler			
Numbers of batteries	2 × 12 V			
Battery type	SHD			
Batteries capacity	1 200 A-190 Ah			
TRANSMISSION				
Type	Hydraulic			
Model	Danfoss / Rexroth			
Maximum pressure	480 bar			
Displacement	Electronically controlled variable displacement pump			
Gearbox	2 speeds forward-reverse			
AXLES AND BRAKES				
Type	Axles with planetary gearboxes			
Front axle	Oscillating and steering with levelling, +/-8°			
Rear axle	Oscillating and steering with hydraulic lock			
Numbers of steering wheels	4WS			
Steering types	2WS / 4WS / Crab			
Service brake	Hydraulically operated wet multi-disk brakes on each axle			
Parking brake	Hydraulic with negative action			
Tyre sizes	445/65 R22.5			
PERFORMANCE				
Max. travel speed	40 km/h			
Drawbar pull	68 kN		89 kN	88 kN
Gradeability	34%			
Turning circle (at forks)	6 080 mm	6 670 mm	6 730 mm	6 940 mm
WEIGHTS				
Total unladen	19 100 kg	19 600 kg	22 600 kg	22 500 kg
Front axle unladen (boom retracted and lowered)	8 300 kg	8 550 kg	10 400 kg	9 900 kg
Rear axle unladen (boom retracted and lowered)	10 800 kg	11 050 kg	12 000 kg	12 600 kg
TANK AND SYSTEM CAPACITIES				
Diesel fuel tank	240 l		270 l	
AdBlue	10 l	10 l	40 l	40 l
Hydraulic fluid	130 l		160 l	
Engine oil	9 l		16 l	
Cooling liquid	20 l		40 l	
HYDRAULIC CIRCUIT FOR MOVEMENTS				
Circuit type	Load sensing			
Service pump	Variable displacement piston pump			
Max. hydraulic capacity	130 l/min		160 l/min	
Max. working pressure	350 bar			
Distributor for boom and turret movements	SIL 2 electro-proportional valve			
Movements control	2 two-axis Danfoss joysticks with deadman safety device			

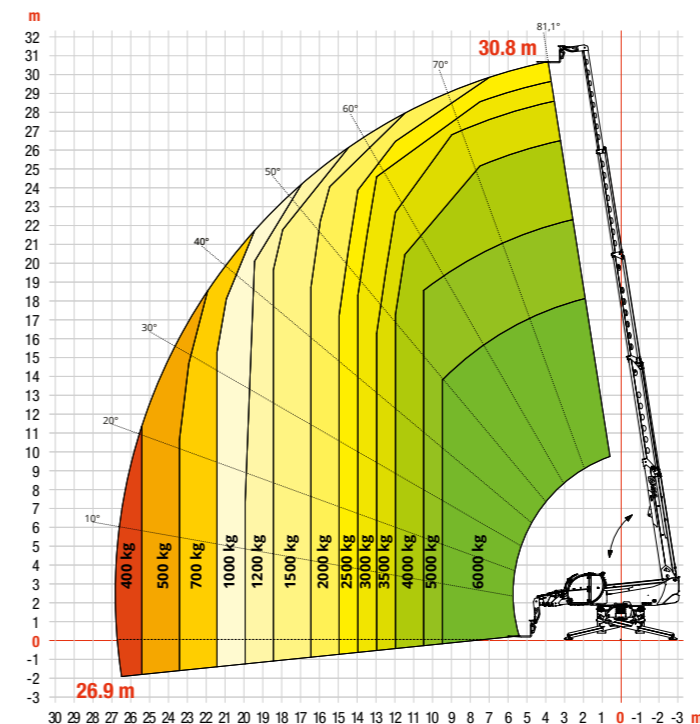
TR60.220



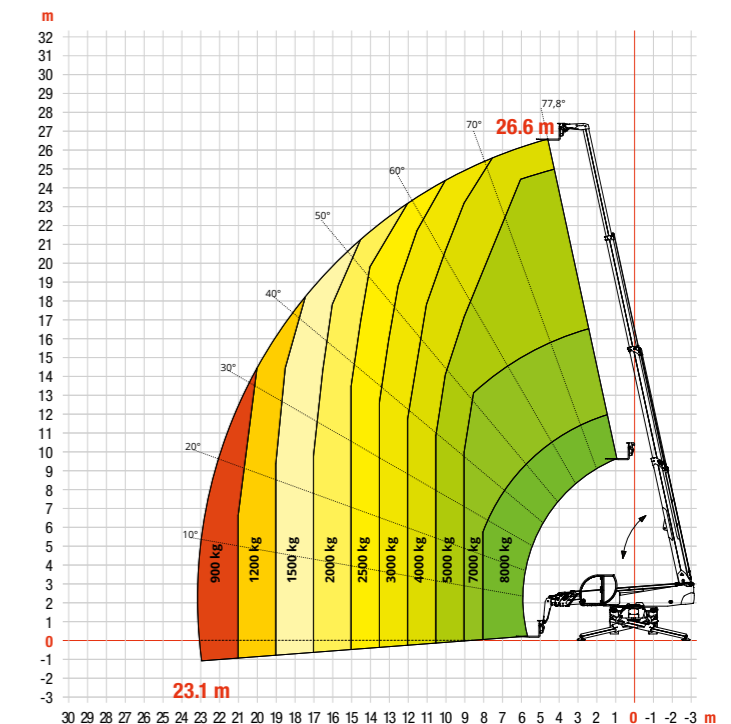
TR60.260



TR60.310



TR80.270

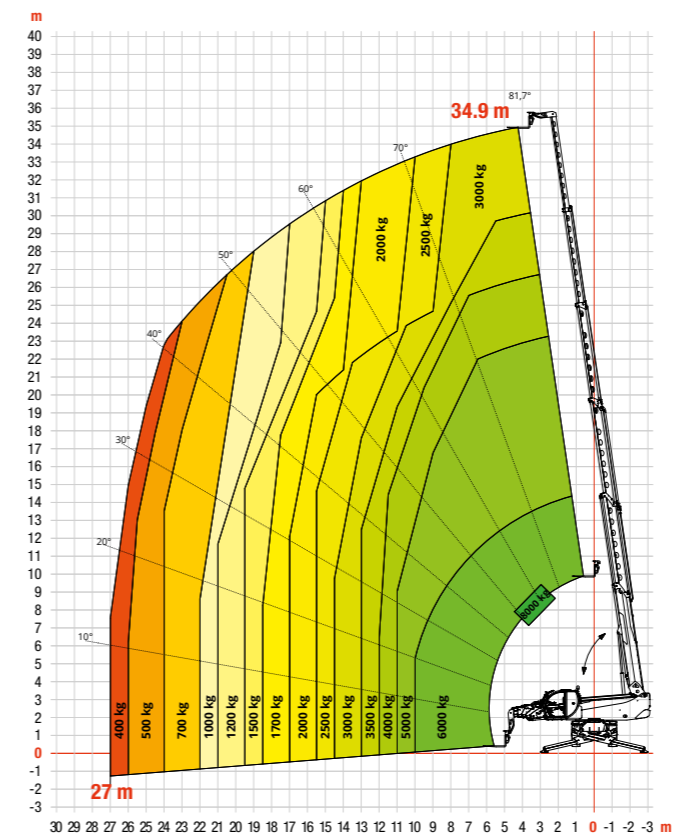


Load charts with load centre at 500 mm up to 4 999 kg rated capacity and 600 mm above.

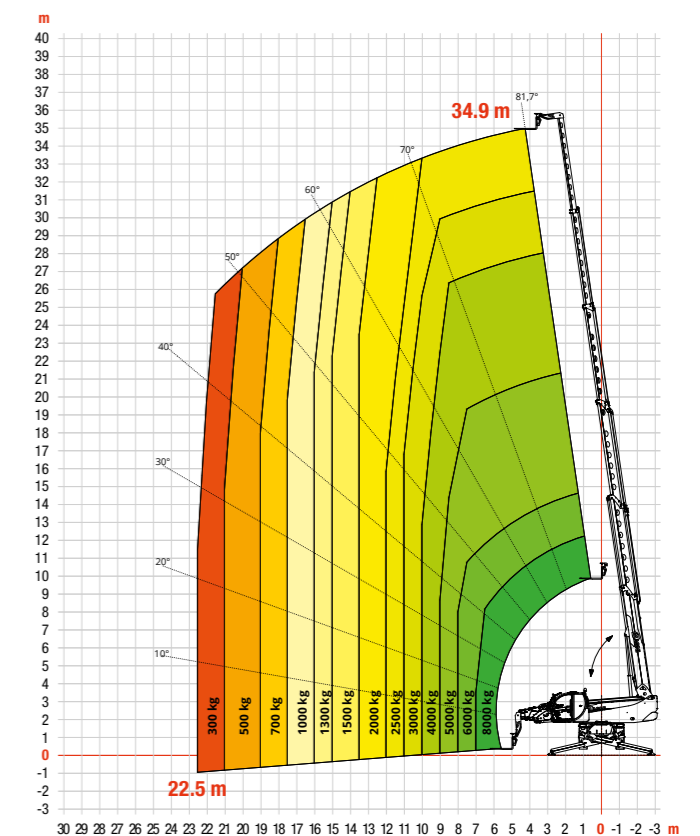
SPECIFICATIONS

SPECIFICATIONS		
	TR80.350	TR80.390
MACHINE MODEL		
Maximum lifting capacity	8 000 kg	
Maximum reach	27 m	
Maximum lifting height	34.9 m	38.9 m
Rotation	360° (continuous)	
STABILIZERS		
Type	Scissor stabilisers with single telescopic extension	
Controls	Independent or combined	
ENGINE		
Type	Volvo TAD 583 VE Stage V	
Rated power (kW @ rpm)	175 @ 2 300	
Maximum torque (Nm @ rpm)	975 @ 11 380	
Displacement	3 620 cm ³	
Cylinders	4 in line	
Engine configuration	Turbocharged direct injection diesel	
Cooling system	Water — intercooler	
Numbers of batteries	2 × 12 V	
Battery type	SHD	
Batteries capacity	1 200 A-190 Ah	
TRANSMISSION		
Type	Hydraulic	
Model	Danfoss / Rexroth	
Maximum pressure	480 bar	
Displacement	Electronically controlled variable displacement pump	
Gearbox	2 speeds forward-reverse	
AXLES AND BRAKES		
Type	Axles with planetary gearboxes	
Front axle	Oscillating and steering with levelling, +/-8°	
Rear axle	Oscillating and steering with hydraulic lock	
Numbers of steering wheels	4WS	
Steering types	2WS / 4WS / Crab	
Service brake	Hydraulically operated wet multi-disk brakes on each axle	
Parking brake	Hydraulic with negative action	
Tyre sizes	445/65 R22.5	
PERFORMANCE		
Max. travel speed	40 km/h	
Drawbar pull	152 kN	
Gradeability	61.7%	65%
Turning circle (at forks)	7 000 mm	6 970 mm
WEIGHTS		
Total unladen	24 000 kg	
Front axle unladen (boom retracted and lowered)	12 000 kg	
Rear axle unladen (boom retracted and lowered)	12 000 kg	
TANK AND SYSTEM CAPACITIES		
Diesel fuel tank	240 l	
AdBlue	40 l	
Hydraulic fluid	240 l	220 l
Engine oil	9 l	
Cooling liquid	20 l	
HYDRAULIC CIRCUIT FOR MOVEMENTS		
Circuit type	Load sensing	
Service pump	Variable displacement piston pump	
Max. hydraulic capacity	130 l/min	
Max. working pressure	350 bar	
Distributor for boom and turret movements	SIL 2 electro-proportional valve	
Movements control	2 two-axis Danfoss joysticks with deadman safety device	

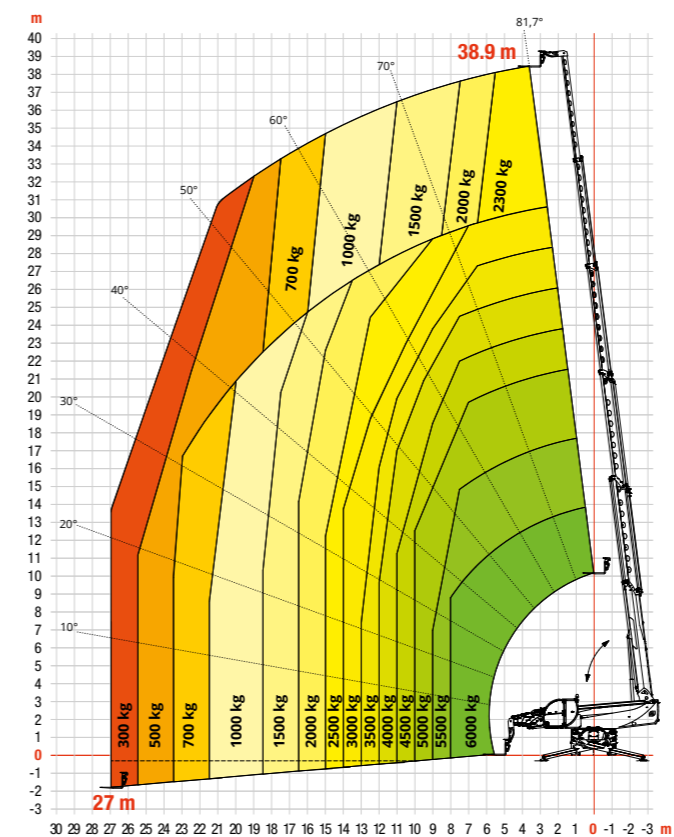
TR80.350
— FULLY EXTENDED STABILIZERS (360°) M1



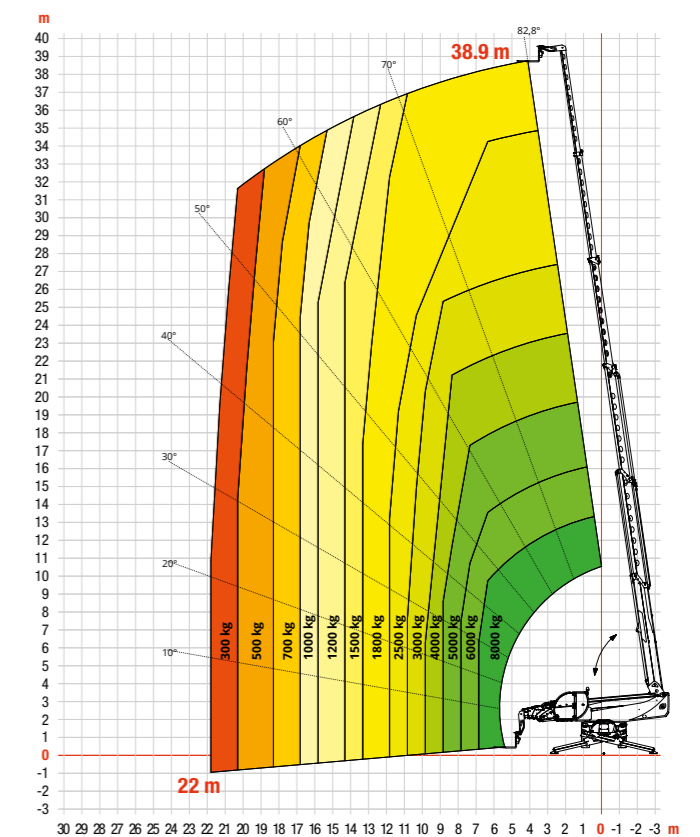
TR80.350
— FULLY EXTENDED STABILIZERS (360°) M2



TR80.390
— FULLY EXTENDED STABILIZERS (360°) M1



TR80.390
— FULLY EXTENDED STABILIZERS (360°) M2



Load charts with load centre at 500 mm up to 4 999 kg rated capacity and 600 mm above.

FINANCING OPTIONS

24, 36, OR 48-MONTH FINANCING*

Take advantage of 24, 36, or 48-month financing programs starting from **0% interest** and improve your cash flow.

Ask your dealer for the financing offers available.



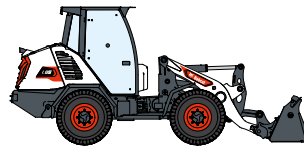
340 MACHINES / **150** ATTACHMENT FAMILIES / **1** TOUGH ANIMAL



**SKID-STEER
LOADERS**



**COMPACT TRACK
LOADERS**



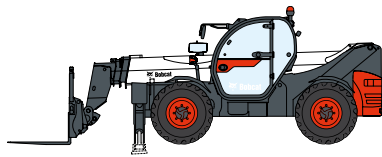
**COMPACT WHEEL
LOADERS**



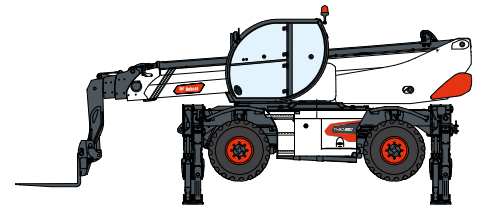
**COMPACT
EXCAVATORS**



FORKLIFTS



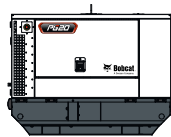
TELEHANDLERS



ROTARY TELEHANDLERS



**WAREHOUSE
EQUIPMENT**



GENERATORS



**AIR
COMPRESSORS**



**LIGHT COMPACTION
EQUIPMENT**



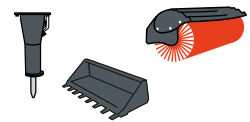
**COMPACT
TRACTORS**



**MINI TRACK
LOADERS**



MOWERS



ATTACHMENTS

DOOSAN

Bobcat is a Doosan Company. Doosan is a global leader in construction equipment, power & water solutions, engines, and engineering proudly serving customers and communities for more than a century. | Bobcat and the Bobcat logo are registered trademarks of Bobcat Company in the United States and various other countries. ©2026 Bobcat Company. All Rights Reserved.

*Financing options may vary by country and dealer. Always ask your dealer about currently available financing options. Terms and conditions may apply.

Doosan Bobcat EMEA, U Kodelky 1810, 263 12 Dobříš, Czech Republic



Bobcat