



Bobcat

One Tough Animal

ESSENTIAL PALLET TRUCKS

Warehouse equipment, 1.5 to 2.0-ton capacity

🌐 EMEA



GET EASY HANDLING WITH THE LPM15/20N-7 PALLET TRUCKS

The LPM15/20N-7 pallet trucks, with 1.5 to 2.0-ton capacities, are designed for reliability and efficiency. Equipped with removable lithium-ion batteries, they offer easy maintenance, flexible charging, and quick 2.5-hour charge times—all while keeping total ownership costs low. With smooth mobility and simple designs, these trucks are easy to maneuver, operate, and maintain, delivering exceptional value for all your material handling needs.

At Bobcat, we understand the importance of having the right products and services. For more information, contact your local dealer or visit: www.bobcat.com.



TOUGH, AGILE & SAFE

► THE RELIABLE CHOICE FOR YOUR BUSINESS

Make your intralogistics smoother with Bobcat pallet trucks. Built with durable components and an ergonomic design, they deliver reliability you can count on. Plus, the lithium battery provides steady power, allowing you to focus less on your equipment and more on growing your business.



Tiller head with dual butterfly switches for ergonomic comfort

Easy battery removal and direct charging for simplified operation

Various lengths and widths of the pallet forks for easy entry and exit of palletized loads

Single or tandem load wheels for smooth operation on uneven ground

Full charge in 2.5 hours with a fast-charging lithium-ion battery and optional boost

Li-Ion
TECHNOLOGY



High-quality controls for simple and safe operation of all hydraulic functions

Durable and reliable 24 / 48 V Curtis DC traction motor and control system

Increased mobility between axle body and frame

Compact, robust design for safe and comfortable operation, even in tight spaces

Caster wheels for stability under heavy loads and varying conditions



► PRACTICAL PERFORMANCE

Our lightweight pallet trucks are easy to handle, powered by a lithium-ion battery, and built to perform, shift after shift.



► ALL-DAY COMFORT

Our pallet trucks are designed with an ergonomic tiller head and easy-to-reach controls for a smooth, stress-free workday.



► SAFE NAVIGATION

With a turtle switch and speed reduction kit, you have everything you need to safely maneuver corners and tight spaces.



► EVERYDAY RELIABILITY

Our trucks are built for reliability, with superior component protection, steel covers, and an easy battery removal system — so you can trust them to work as hard as you do.

EASE OF USE



► **ERGONOMIC TILLER CONTROL**

Each model features an ergonomic tiller arm, designed for both left- and right-handed operators, with dual butterfly switches for easy control. Plus, the emergency switch ensures a quick getaway when you need it most.



► **MONITORING DISPLAY & PIN CODE ACCESS**

Keep an eye on your truck's status in real time for a smooth, hassle-free day. With PIN code access, you can also rest easy knowing your equipment is secure and protected from unauthorized use.



► **OVERRIDE BUTTON**

By enabling movement with the tiller in a vertical position, this feature allows safe, precise operation in the tightest spaces.



► **SPEED-REDUCING FEATURES**

With features like the turtle switch and a speed reduction kit for cornering, you can slow down around tight corners or tricky spots, giving you the extra precision and control needed to handle any task.



► **EASY BATTERY CHARGING**

Keep the workday moving with quick and easy battery swaps to eliminate downtime. Plus, an integrated socket lets you charge the battery directly in the truck for added convenience.



► **STABILITY CASTER™ WHEELS**

Glide through your tasks with Stability Caster™ wheels, designed to smooth out every move and minimize resistance – so you stay comfortable and injury-free.



MAIN SPECIFICATIONS

TECHNICAL DATA ACCORDING TO VDI 2198				
		Unit	LPM15N-7	LPM20N-7
CHARACTERISTICS				
Drive			electric	
Operator type			walkie, middle drive	
Load capacity / rated load center	Q	kg	1 500	2 000
Load center	c	mm	600	
Load distance	x	mm	947	951
Wheelbase	y	mm	1 185	1 189
TIRES				
Tires			polyurethane (PU)	
Tire size, front		mm	210 × 70	
Tire size, rear		mm	80 × 93	
Additional wheels (dimensions)		mm	80 × 30	
Track width, front	b10	mm	430	
Track width, rear	b11	mm	380	
DIMENSIONS				
Lift	h3	mm	115	
Height of tiller in drive position, min. / max.	h14	mm	700 / 1 160	
Height, lowered	h13	mm	80	
Overall length	l1	mm	1 530	1 536
Length to forkface	l2	mm	380	386
Overall width	b1	mm	540	
Fork dimensions	s/e/l	mm	47 × 160 × 1 150	
Distance over forks	b5	mm	540	
Ground clearance, center of wheelbase	m2	mm	33	
Aisle width for pallets 800 × 1 200 lengthways	Ast	mm	2 000	2 006
External turning radius	Wa	mm	1 330	1 336
PERFORMANCE DATA				
Travel speed, with / without load		km/h	4.6 / 4.8	4.8 / 5.2
Max. gradeability, with / without load		%	6 / 16	7 / 16
Service brake			electromagnetic	
Energy consumption according to VDI cycle		kWh/h	0.22	0.18

Specification values in this sheet have been rounded. Performance may vary depending on operating conditions. Products and specifications are subject to improvement and change without prior notice.

STANDARD EQUIPMENT & OPTIONS

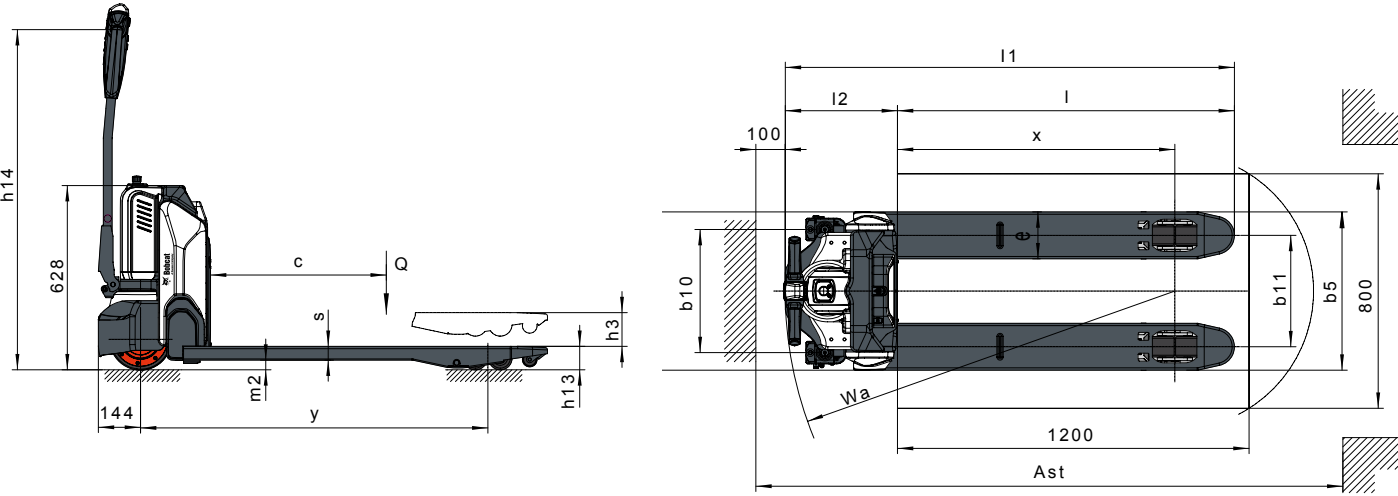
STANDARD EQUIPMENT & OPTIONS	
	LPM15/20N-7
PRODUCTIVITY	
Single and tandem load wheels	✓
Display to monitor energy and machine status	✓
Mechanical steering	✓
Convenient battery removal system	✓
Lithium-ion battery	✓
SAFETY	
PIN code access	✓
Turtle speed button	✓
Speed reduction kit for cornering	✓
Safety reverse button	✓
Load Backrest 1 070 mm	•
Load Backrest 1 220 mm	•

• = option ✓ = standard – not available

*This list is based on factory data. Standard and optional features may vary by country.

STANDARD EQUIPMENT & OPTIONS	
	LPM15/20N-7
RELIABILITY	
Steel cover	✓
Stability Caster™ wheels	✓
FORKS	
800 / 540 mm	•
800 / 685 mm	•
915 / 540 mm	•
915 / 685 mm	•
1 000 / 540 mm	•
1 000 / 685 mm	•
1 150 / 540 mm	✓
1 150 / 685 mm	✓
1 220 / 540 mm	✓
1 220 / 685 mm	✓

DIMENSIONS



BUILT TO LAST

► EQUIPMENT YOU CAN COUNT ON

With their rugged design, 24 V controller (LPM15N-7), 48 V controller (LPM20N-7), and simple battery charging, Bobcat warehouse equipment is engineered for exceptional uptime and long-lasting performance.

1 YEAR WARRANTY

► WARRANTY

Bobcat develops every machine to the highest standards of quality and durability. That's why our standard warranty provides 12 months or 2 000 operating hours (whichever occurs first) of parts coverage.

► BOBCAT GENUINE PARTS

Quality components delivered to our dealers guarantee that all of our equipment is built to last, withstand the toughest conditions, and deliver reliable performance.



► EXTENSIVE DEALER NETWORK

You can rely on our network of dealers and service partners who are always ready to help you.



Li-Ion
TECHNOLOGY



Europe



MEA



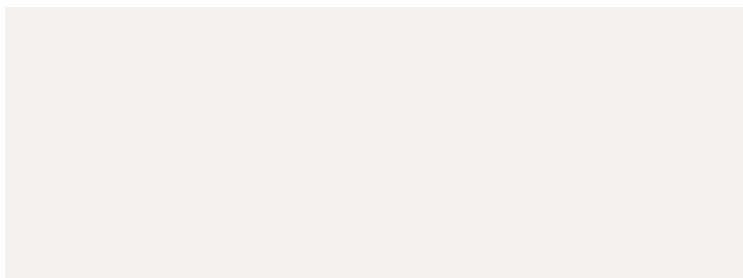
CIS

SEE IF IT'S THE RIGHT FIT
FOR YOUR FLEET



► LI-ION BATTERY WARRANTY

With a 60-month / 10 000 operating hours (whichever occurs first) warranty, Bobcat's lithium-ion battery ensures reliable performance and peace of mind for years.



Doosan Bobcat EMEA, U Kodetky 1810, 263 12 Dobříš, Czech Republic

DOOSAN

Bobcat is a Doosan Company. Doosan is a global leader in construction equipment, power & water solutions, engines, and engineering proudly serving customers and communities for more than a century. | Bobcat and the Bobcat logo are registered trademarks of Bobcat Company in the United States and various other countries. ©2025 Bobcat Company. All Rights Reserved.

www.bobcat.com

©2025 BOBCAT L4503341-EN (05-25)