



Bobcat

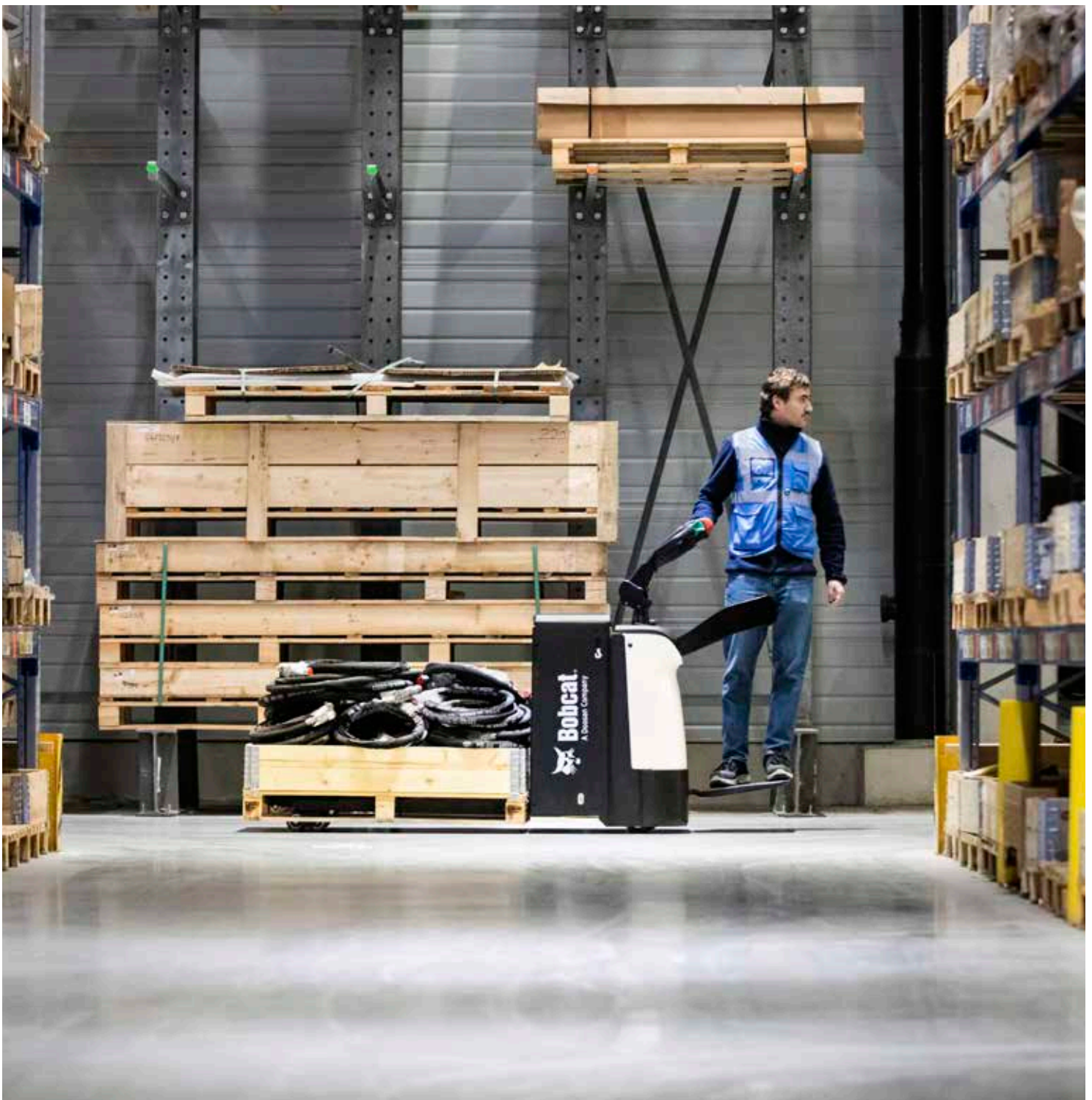
One Tough Animal

SPECIFICATIONS

POWERED PALLET TRUCKS

Warehouse equipment, 2.0 to 2.5-ton capacity

🌐 EMEA



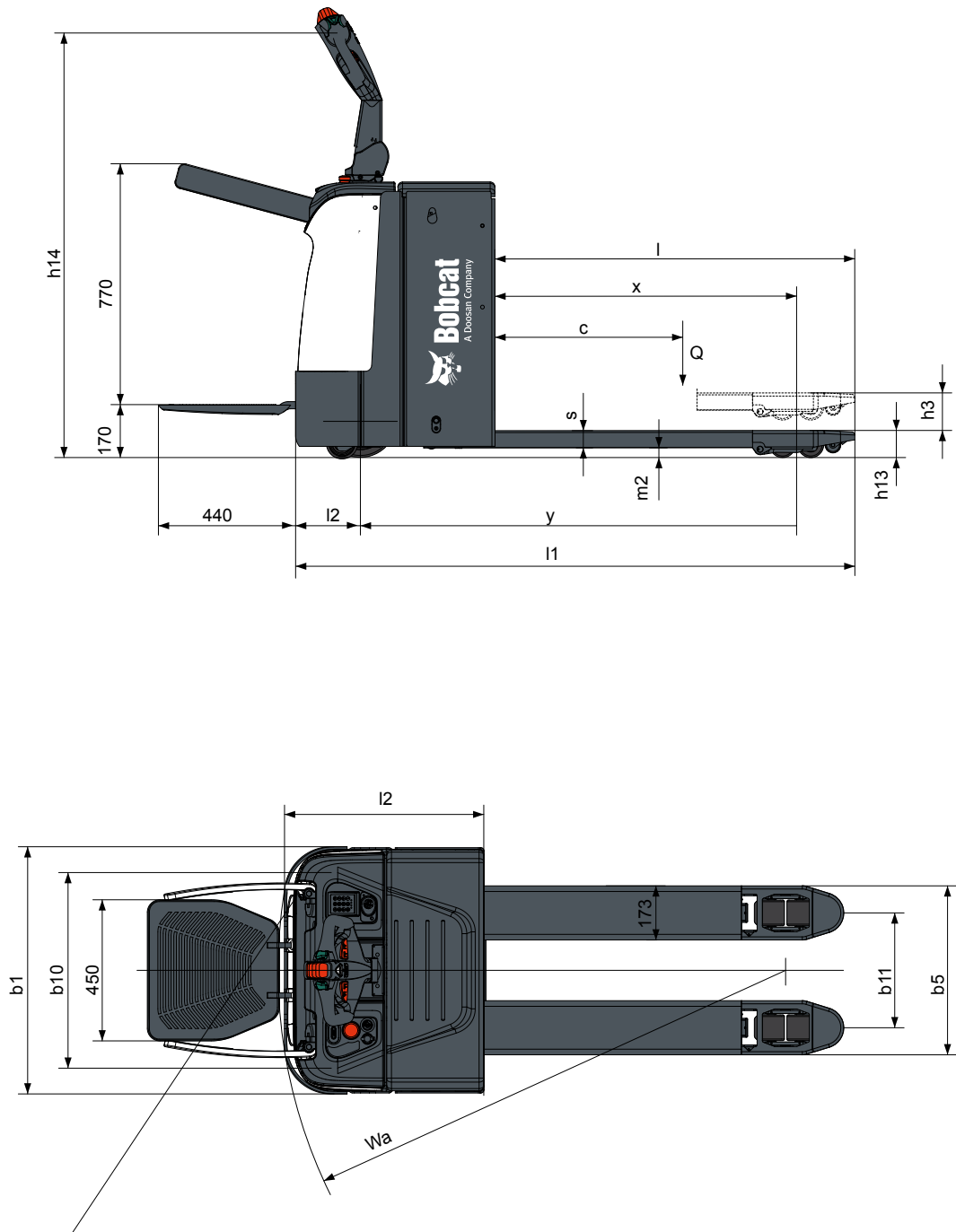
MAIN SPECIFICATIONS

TECHNICAL DATA ACCORDING TO VDI 2198				
		Unit	BPR20N-7	BPR25N-7
CHARACTERISTICS				
1.3 Drive			battery	
1.4 Operator type			pedestrian, stand	
1.5 Load capacity, rated load center	Q	kg	2 000	2 500
1.6 Load center	c	mm	600	
1.8 Load distance	x	mm	892 ¹	
1.9 Wheelbase	y	mm	1 330 ¹²	1 435 ¹
WEIGHT				
2.1 Service weight (incl. battery)		kg	620	770
2.2 Axle loading, with load, front / rear		kg	1 110 / 1 510	1 370 / 1 900
2.3 Axle loading, without load, front / rear		kg	500 / 120	610 / 160
TIRES				
3.1 Tires			polyurethane (PU)	
3.2 Tire size, front		mm	230 × 70	
3.3 Tire size, rear		mm	84 × 84	
3.4 Support wheel		mm	100 x 40	
3.5 Wheels, number front / rear (x=driven wheels)			1x + 2 / 4	
3.6 Track width, front	b10	mm	560	
3.7 Track width, rear	b11	mm	367 / 512	
DIMENSIONS				
4.4 Lift	h3	mm	120	
4.9 Height of tiller in drive position, min. / max.	h14	mm	980 / 1 300	
4.15 Height, lowered	h13	mm	85	
4.19 Overall length	l1	mm	1 790 ²³	1 895
4.20 Length to forkface	l2	mm	640 ²³	745 ³
4.21 Overall width	b1/b2	mm	790	
4.22 Fork dimensions	s/e/l	mm	55 × 173 × 1 150	
4.25 Distance between fork arms	b5	mm	540 / 685	
4.32 Ground clearance, center of wheelbase	m2	mm	30	
4.33 Aisle width for pallets 1 000 × 1 200 crossways	Ast	mm	2 400 ²³	2 505 ³
4.34 Aisle width for pallets 800 × 1 200 crossways	Ast	mm	2 290 ²³	2 395 ³
4.35 External turning radius	Wa	mm	1 585 ²³	1 690 ³
PERFORMANCE DATA				
5.1 Travel speed, with / without load		km/h	7.5 / 8	6 / 7
5.2 Lift speed, with / without load		mm/s	250 / 300	350 / 450
5.3 Lowering speed, with / without load		mm/s	300 / 250	450 / 500
5.8 Max. gradeability, with / without load		(%)	15 / 10	
5.10 Service brake			electromagnetic	
ELECTRIC MOTOR				
6.1 Drive motor rating S2 60min		kW	1.4	
6.2 Lift motor rating at S3 10%		kW	0.8	2.2
6.3 Battery acc. to DIN 43535 A / B / C / no			no	
6.4 Battery voltage, nominal capacity K5		V/Ah	24 / 160-210	24 / 270-350
6.5 Battery weight		kg	155	235
6.6 Energy consumption acc. to VDI cycle		kWh/h	0.55	0.95
ADDITIONAL DATA				
8.1 Type of drive control			AC-speed control	
8.4 Sound level at driver's ear acc. to EN12053		db(A)	69	

¹ Load section lowered: +65 mm
² With side battery removal: +30 mm
³ With compact platform: +440 mm

DIMENSIONS

► BPR20N-7 / BPR25N-7



Note: Specification values quoted in this specification sheet have been rounded. Performance may vary depending on operating conditions. Products and specifications are subject to improvement and change without prior notice.

FINANCING OPTIONS

24, 36, OR 48-MONTH FINANCING*

Take advantage of 24, 36, or 48-month financing programs starting from **0% interest** and improve your cash flow.

Ask your dealer about the available financing offers.

340 MACHINES / **150** ATTACHMENT FAMILIES / **1** TOUGH ANIMAL



**SKID-STEER
LOADERS**



**COMPACT TRACK
LOADERS**



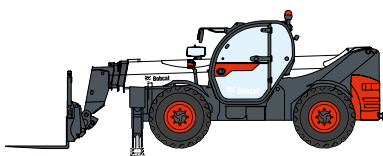
**SMALL ARTICULATED
LOADERS**



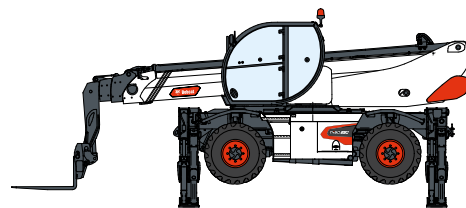
**COMPACT
EXCAVATORS**



FORKLIFTS



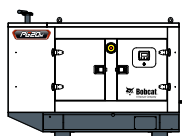
TELEHANDLERS



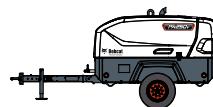
ROTARY TELEHANDLERS



**WAREHOUSE
EQUIPMENT**



GENERATORS



**AIR
COMPRESSORS**



**LIGHT COMPACTION
EQUIPMENT**



**MINI TRACK
LOADER**



MOWERS



ATTACHMENTS

DOOSAN

Bobcat is a Doosan Company. Doosan is a global leader in construction equipment, power & water solutions, engines, and engineering proudly serving customers and communities for more than a century. | Bobcat and the Bobcat logo are registered trademarks of Bobcat Company in the United States and various other countries. ©2025 Bobcat Company. All Rights Reserved.

www.bobcat.com

©2025 BOBCAT B4503270-EN (02-25)



Bobcat

*Financing options may vary by country and dealer. Always ask your dealer about currently available financing options. Terms and conditions may apply.

Doosan Bobcat EMEA, U Kodelky 1810, 263 12 Dobříš, Czech Republic