



**Bobcat**

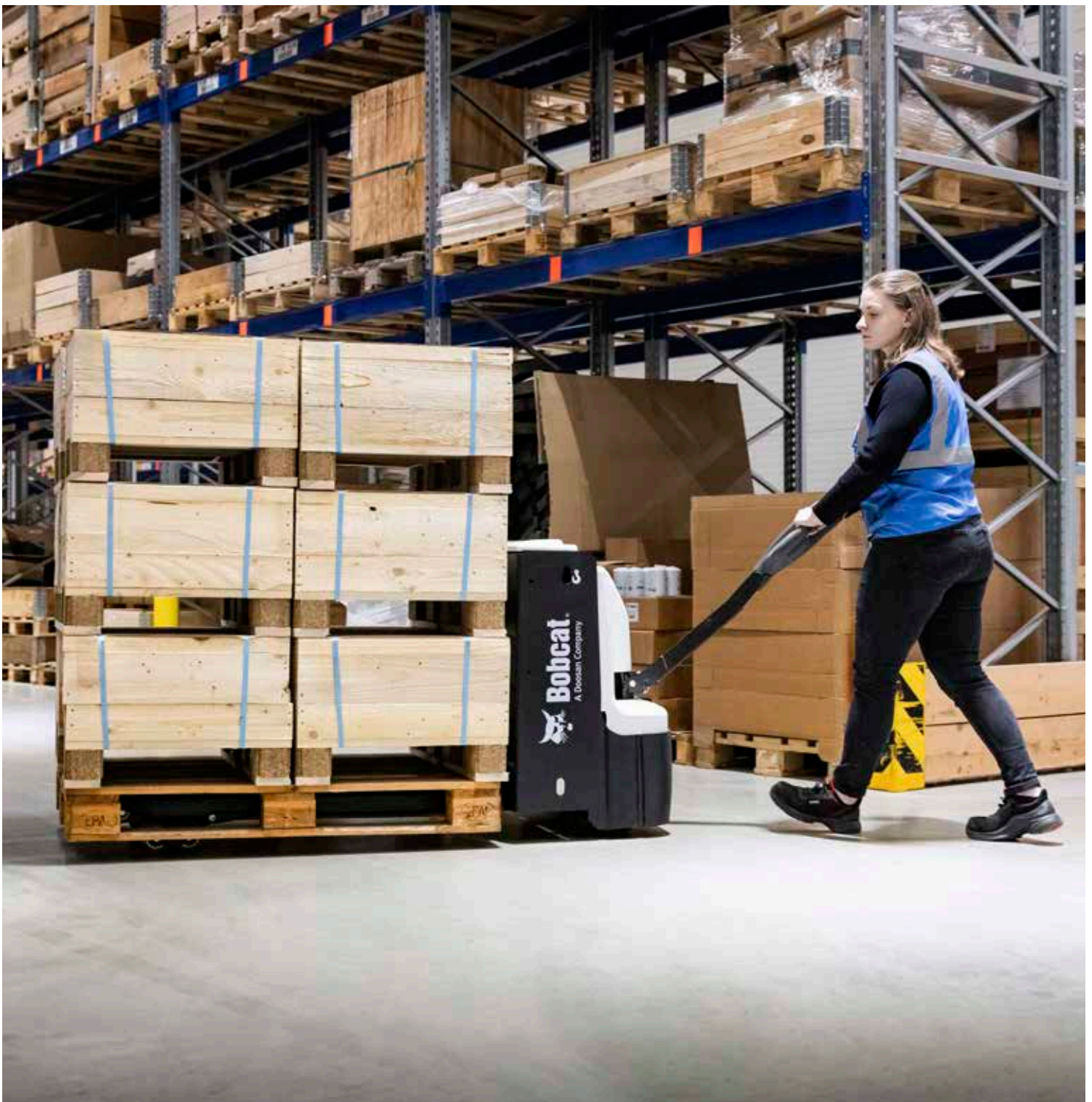
*One Tough Animal*

SPECIFICATIONS

# POWERED PALLET TRUCKS

Warehouse equipment, 1.6 to 2.0-ton capacity

🌐 EMEA



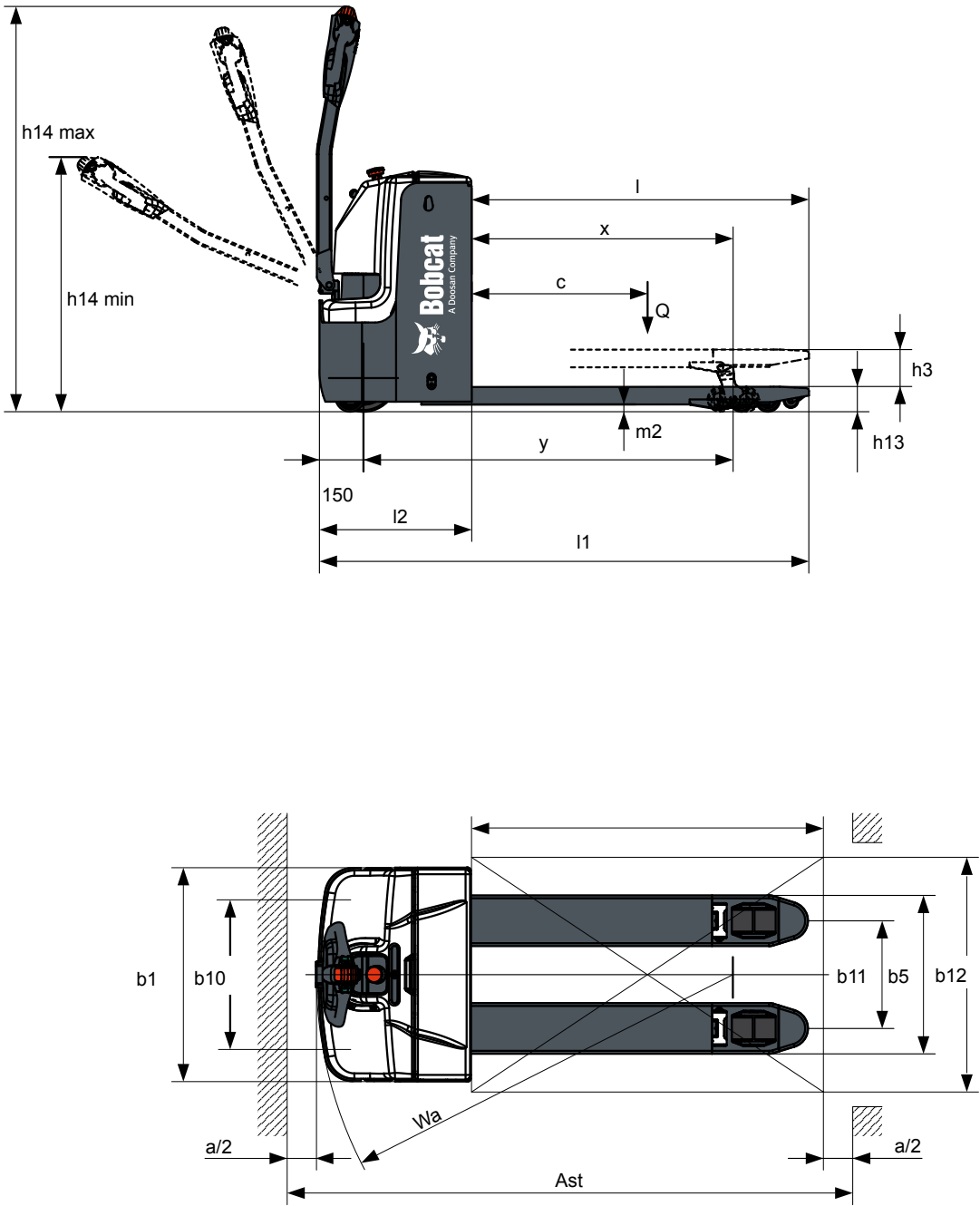
MAIN SPECIFICATIONS

TECHNICAL DATA ACCORDING TO VDI 2198					
		Unit	BPM16N-7		BPM20N-7
CHARACTERISTICS					
1.3 Drive			battery		
1.4 Operator type			pedestrian		
1.5 Load capacity, rated load center	Q	kg	1 600		2 000
1.6 Load center	c	mm	600		
1.8 Load distance	x	mm	892		
1.9 Wheelbase	y	mm	1 261		1 327
WEIGHT					
2.1 Service weight (incl. battery)		kg	445		535
2.2 Axle loading, with load, front / rear		kg	715 / 1 330		855 / 1 680
2.3 Axle loading, without load, front / rear		kg	345 / 100		415 / 120
TIRES					
3.1 Tires			polyurethane (PU)		
3.2 Tire size, front		mm	230 × 70		
3.3 Tire size, rear		mm	84 × 84		
3.4 Support wheel		mm	100 × 40		
3.5 Wheels, number front / rear (x=driven wheels)			1x + 2 / 4		
3.6 Track width, front	b10	mm	510		
3.7 Track width, rear	b11	mm	367 / 512		
DIMENSIONS					
4.4 Lift	h3	mm	120		
4.9 Height of tiller in drive position, min. / max.	h14	mm	820 / 1 335		
4.15 Height, lowered	h13	mm	85		
4.19 Overall length	l1	mm	1 670		1 735
4.20 Length to forkface	l2	mm	520		595
4.21 Overall width	b1/b2	mm	729		
4.22 Fork dimensions	s/e/l	mm	60 × 173 × 1 150		
4.25 Distance between fork arms	b5	mm	540 / 685		
4.32 Ground clearance, center of wheelbase	m2	mm	25		
4.33 Aisle width for pallets 1 000 × 1 200 crossways	Ast	mm	1 885		1 955
4.34 Aisle width for pallets 800 × 1 200 lengthways	Ast	mm	1 935		2 005
4.35 Turning radius	Wa	mm	1 440		1 490
PERFORMANCE DATA					
5.1 Travel speed, with / without load		km/h	5.7 / 6		
5.2 Lift speed, with / without load		mm/s	250 / 350		220 / 300
5.3 Lowering speed, with / without load		mm/s	350 / 300		350 / 350
5.8 Max. gradeability, with / without load		(%)	8 / 15		
5.10 Service brake			electromagnetic		
ELECTRIC MOTOR					
6.1 Drive motor rating S2 60min		kW	1.3		
6.2 Lift motor rating at S3 10%		kW	0.8		
6.3 Battery acc. to DIN 43535 A/B/C/no			2VBS		2PzS
6.4 Battery voltage, nominal capacity K5		V/Ah	160		210
6.5 Battery weight		kg	150		215
6.6 Energy consumption acc. to VDI cycle		kWh/h	0.44		0.39
ADDITIONAL DATA					
8.1 Type of drive control			AC-speed control		
8.4 Sound level at driver's ear acc. to EN12053		db(A)	67		69

Note: Specification values quoted in this specification sheet have been rounded. Performance may vary depending on operating conditions. Products and specifications are subject to improvement and change without prior notice.

DIMENSIONS

► BPM16N-7 / BPM20N-7



# FINANCING OPTIONS

## 24, 36, OR 48-MONTH FINANCING\*

Take advantage of 24, 36, or 48-month financing programs starting from **0% interest** and improve your cash flow.

Ask your dealer about the available financing offers.

**340** MACHINES / **150** ATTACHMENT FAMILIES / **1** TOUGH ANIMAL



**SKID-STEER  
LOADERS**



**COMPACT TRACK  
LOADERS**



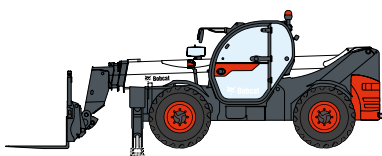
**SMALL ARTICULATED  
LOADERS**



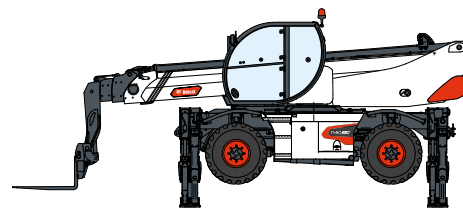
**COMPACT  
EXCAVATORS**



**FORKLIFTS**



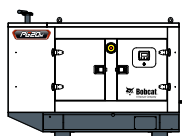
**TELEHANDLERS**



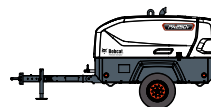
**ROTARY TELEHANDLERS**



**WAREHOUSE  
EQUIPMENT**



**GENERATORS**



**AIR  
COMPRESSORS**



**LIGHT COMPACTION  
EQUIPMENT**



**MINI TRACK  
LOADER**



**MOWERS**



**ATTACHMENTS**

**DOOSAN**

**Bobcat is a Doosan Company.** Doosan is a global leader in construction equipment, power & water solutions, engines, and engineering proudly serving customers and communities for more than a century. | Bobcat and the Bobcat logo are registered trademarks of Bobcat Company in the United States and various other countries. ©2025 Bobcat Company. All Rights Reserved.

[www.bobcat.com](http://www.bobcat.com)

©2025 BOBCAT B4503261-EN (04-25)



# Bobcat

\*Financing options may vary by country and dealer. Always ask your dealer about currently available financing options. Terms and conditions may apply.

Doosan Bobcat EMEA, U Kodelky 1810, 263 12 Dobříš, Czech Republic