



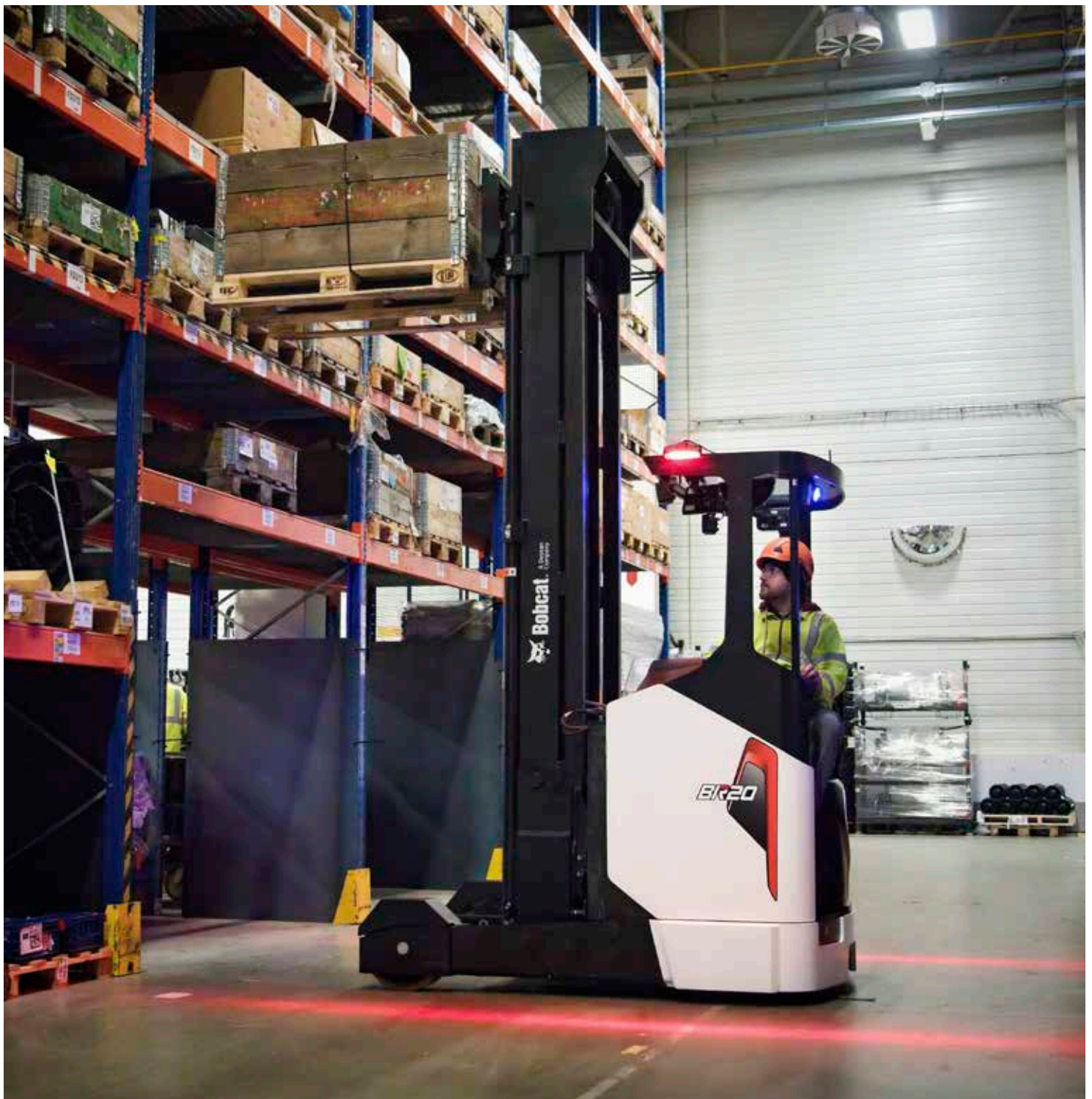
Bobcat

One Tough Animal

REACH TRUCKS

9-Series, 1.4 to 2.5-ton capacity

🌐 EMEA



ONE TOUGH ANIMAL

► OUR MISSION

We empower operators to accomplish more, while working in the toughest conditions and tightest situations. When our customers have the will, we provide the way.

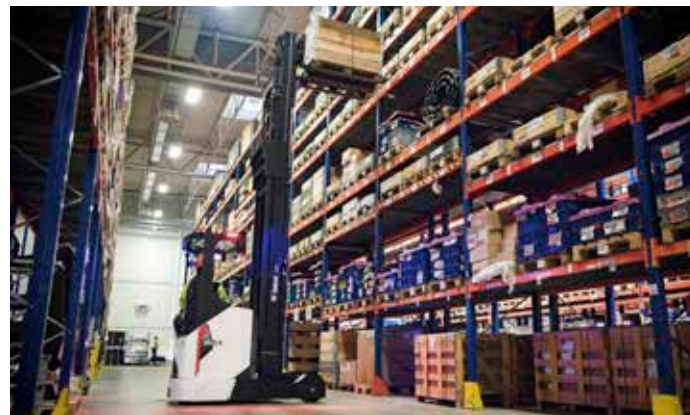


► BOBCAT'S HISTORY

In 1958, the Melroe Manufacturing Company introduced a compact front-end loader that quickly evolved into the M400, the world's first true skid-steer loader. The company soon adopted what became the world famous 'Bobcat' brand — and its success paved the way for the global compact equipment industry we see today.

► YEARS OF EXPERIENCE

In 2021, Bobcat furthered its reach by acquiring Doosan Industrial Vehicle, increasing its capacity to provide customers with comprehensive business solutions. With Doosan's expertise in material handling and warehouse equipment dating back to its inaugural forklift in 1968, the company has established a global presence, with 400 dealers across 93 countries.



► BOBCAT TODAY

Now, with a diversified portfolio that includes forklifts and warehouse equipment, Bobcat serves as a one-stop solution for intralogistics needs, from loading shipping containers to optimizing warehouse operations. Made according to the highest manufacturing standards, Bobcat's material handling machines offer the precision and durability customers expect.



TOUGH, AGILE & SAFE

► **READY TO GIVE YOUR BUSINESS A LIFT**

Give your business a boost with an electric reach truck that ticks all the boxes: a high-performance, powerful, and efficient motor, smooth and variable controls, and a full suite of safety features—all in a rugged, dependable, and highly productive machine.



► **MAXIMUM PERFORMANCE**

Enjoy a boost in agility and productivity with a tight turning radius, excellent visibility, and a powerful, well-designed controller.
P. 6–7



► **ALL-DAY COMFORT**

Enjoy exceptional comfort with a user-friendly interior, adjustable steering, a premium Grammer seat, intuitive fingertip controls, and optional joystick for even smoother handling.
P. 8–9



► **DRIVEN BY SAFETY**

Experience peace of mind during everyday operations with the machine's full suite of safety features, including the speed limit function and thermal control system protector.
P. 10–11



► **MAXIMUM UPTIME**

Minimize the total cost of ownership with high-quality genuine Bobcat parts and consumables, offering exceptional value and helping your machine run smoothly and last longer.
P. 10–11

OUTSTANDING PRODUCTIVITY



► CURTIS CONTROLLER

The Curtis controller enhances efficiency, precision, and reliability, simplifying operations, improving handling accuracy, and boosting overall performance.



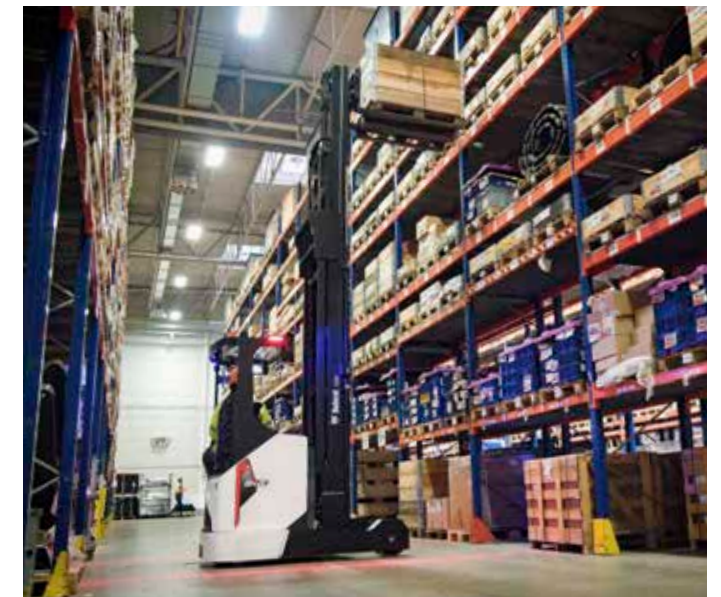
► DRIVE FASTER, LIFT HIGHER

Experience enhanced reach truck performance with significant improvements in driving, lowering, and lifting speeds.



► EXCELLENT VISIBILITY

Operators have excellent visibility from 3 angles: above the roof-top guard, through the mast, and alongside it – boosting productivity on every shift.



► QUICK AND PRECISE FORK HEIGHT ADJUSTMENT

Operators can easily adjust fork height with 64 pre-set steps, allowing for precise load placement, eliminating guesswork, and ensuring smooth warehouse operations.

COMFORT & CONTROLS



► FULL-COLOR DISPLAY WITH PIN CODE START

The display screen shows key information in clear, vibrant colors, giving operators easy access to machine status, diagnostics, and settings. The PIN code start feature adds security by ensuring only authorized staff can operate the reach truck.



► PREMIUM GRAMMER SEAT

Thanks to the premium suspended Grammer seat, our reach trucks offer exceptional comfort, even during long shifts.



► FINGERTIP OR JOYSTICK CONTROLS

Control the truck with greater precision and less fatigue, thanks to the ergonomic fingertip controller that boosts comfort and accuracy.



► ANTI-SLIP STEP & ENTRY BAR

The anti-slip step makes mounting and dismounting the vehicle comfortable and safe, giving you extra peace of mind.

► ADJUSTABLE STEERING WHEEL



The ergonomic steering column features height and length adjustments, allowing operators to find the perfect position.

► EASILY ACCESSIBLE FEATURES



Key features – like the side-shift auto-centering function and height selector – are placed near the joystick for easy access. The power jacks and USB port make it simple to connect or charge devices.

► FORK CAMERA & LASER INDICATOR



A camera system mounted near the forks provides a crystal-clear view of the fork tips and surrounding areas.



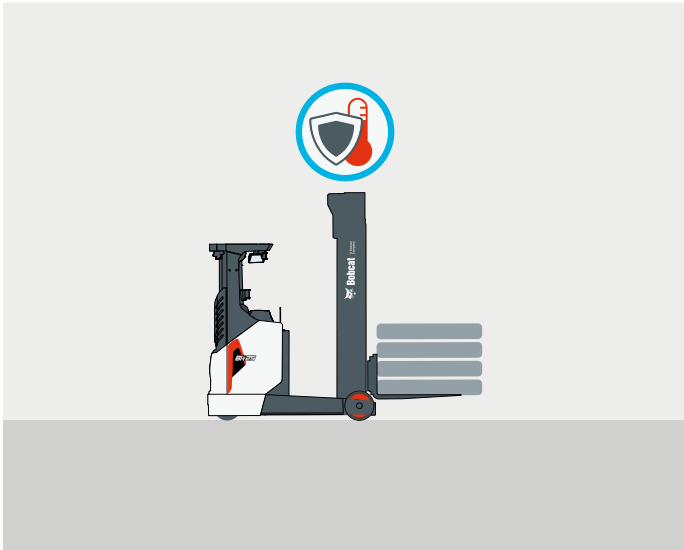
SAFETY IN EVERY MOVE

▶ **ADVANCED PROTECTION FOR YOU AND YOUR OPERATION**

Bobcat reach trucks have safety embedded in their DNA. Packed with tons of features that protect your health and your investment, these machines give you peace of mind in every task, every day.

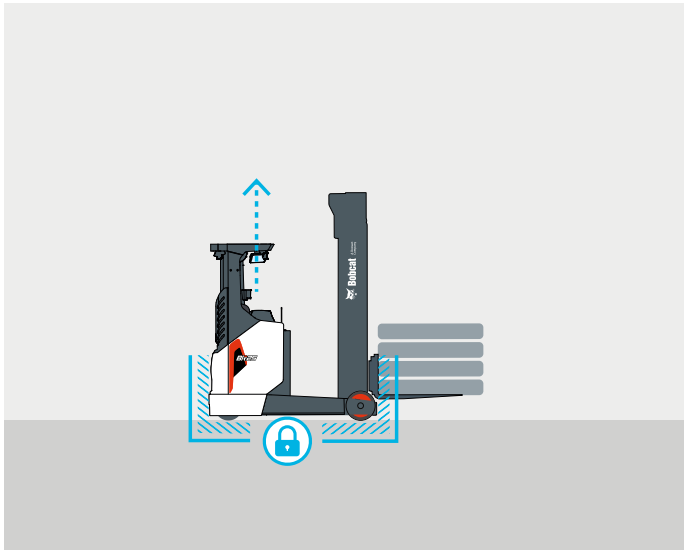
▶ **THERMAL CONTROL SYSTEM PROTECTOR**

By automatically adjusting power to prevent overheating, this feature helps keep your truck cool during heavy use or with large loads.



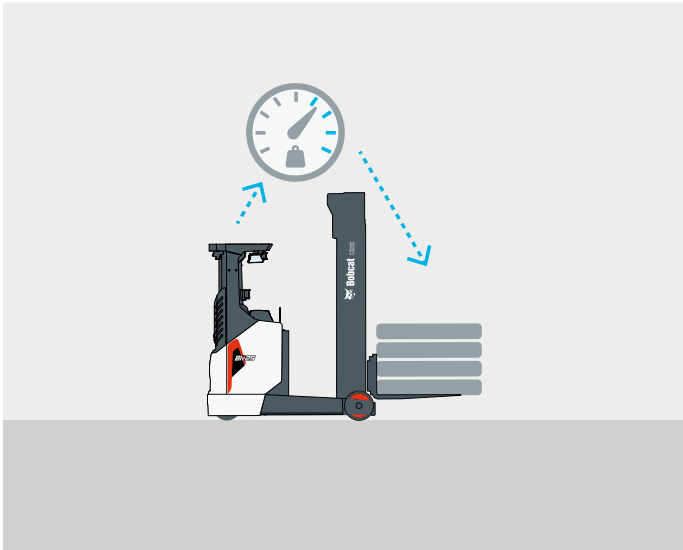
▶ **AUTOMATIC ELECTROMAGNETIC PARKING BRAKE**

The automatic parking brake secures the truck in place, preventing any unintentional movement when stationary.



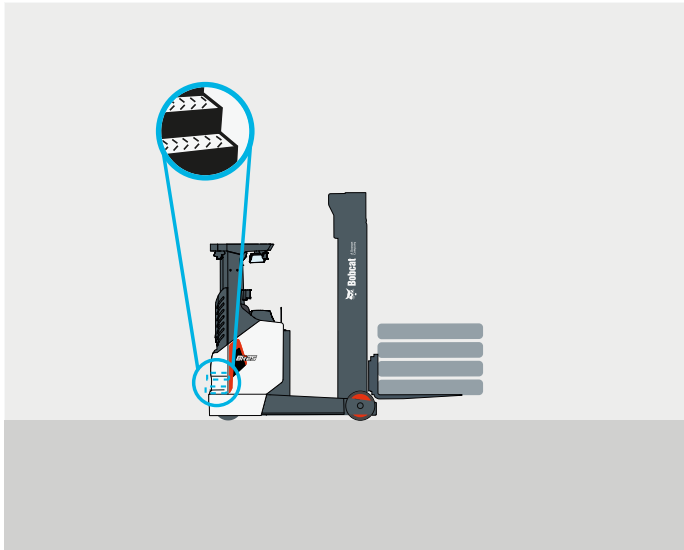
▶ **WEIGHT INDICATOR**

With the help of an integrated weight scale, operators can prevent truck overload, keeping the workplace more secure.



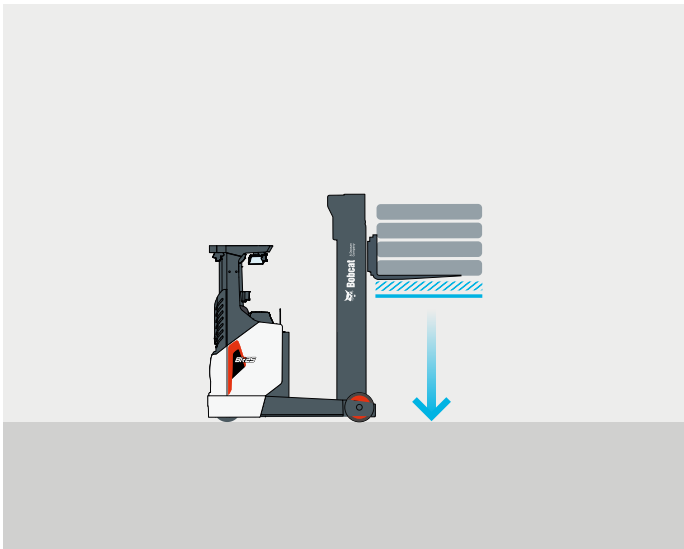
▶ **ANTI-SLIP STEP & ENTRY BAR**

The anti-slip step and handy entry bar provide safety and peace of mind when getting on and off the vehicle.



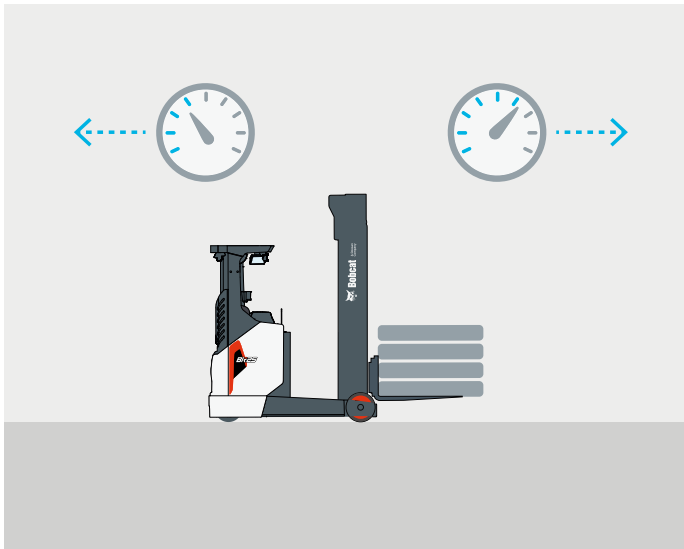
▶ **MAST LIFTING & LOWERING CUSHION**

Designed to ensure smoother and more controlled movements when raising or lowering the mast, this feature also enhances stability, minimizes vibrations, and provides a more comfortable experience for the operator.



▶ **SPEED LIMIT**

When the mast reaches its secondary or elevated stage, the control system detects the position and triggers a speed limit based on the vehicle's drive function.



▶ **PANORAMIC MIRROR**

The large panoramic mirror provides excellent visibility to the rear working area, enhancing safety while contributing to overall productivity.



▶ **RED FENCE LIGHTS**

The vehicle projects red light-lines onto the ground, marking a safe area for pedestrians in close proximity to the vehicle.



BUILT TO LAST

► **EXCELLENT RELIABILITY**

Featuring a reliable Curtis controller, a robust frame and overhead guard, and water-resistant connectors, Bobcat 9-Series Reach Trucks are built tough to ensure maximum uptime and dependability.



2 YEAR WARRANTY

► **WARRANTY**

Bobcat develops every machine to the highest standards of quality and durability. That's why our standard warranty provides 24 months or 2 000 operating hours (whichever occurs first) of coverage.

THERE'S NO TIME FOR DOWNTIME. STAND UP TO EVERY TASK THAT COMES YOUR WAY, DAY AFTER DAY.



► **PROTECTION PLUS EXTENDED WARRANTY**

Enjoy total peace of mind with Protection Plus extended warranty. Providing the same level of protection as the standard warranty, Protection Plus also reflects different customer needs and expectations by offering a choice of durations and annual operating hours.

► **EXTENSIVE DEALER NETWORK**

You can rely on our network of dealers and service partners who are always ready to help you.

► **BOBCAT GENUINE PARTS**

Quality components delivered to our dealers guarantee that all of our equipment is built to last, withstand the toughest conditions, and provide reliable performance.



MAIN SPECIFICATIONS

TECHNICAL DATA ACCORDING TO VDI 2198											
		Unit	BR14J-9			BR16J-9			BR14JW-9		
CHARACTERISTICS											
Manufacturer's type designation			315 Ah	465 Ah	620 Ah	315 Ah	465 Ah	620 Ah	420 Ah	560 Ah	700 Ah
Drive			electric								
Load capacity / rated load	Q	kg	1 250	1 400	1 400	1 250	1 600	1 600	1 400		
Load center	c	mm	600								
Load distance	x	mm	210.5	210.5	145.5	226	226	161	287.5	222.5	152.5
Mast pushed forward	x1	mm	215								
Wheelbase	y	mm	1 390			1 410					
WEIGHT											
Unloaded weight		kg	3 021	3 219	3 427	3 026	3 224	3 432	3 266	3 459	3 647
Axle loading, unloaded, front / rear		kg	1 733 / 1 288	1 844 / 1 375	1 902 / 1 525	1 769 / 1 257	1 895 / 1 329	1 967 / 1 465	1 929 / 1 337	1 986 / 1 473	1 356 / 2 291
Axle loading, fork advanced, load, front / rear		kg	877 / 3 394	933 / 3 686	1 051 / 3 776	912 / 3 364	909 / 3 915	1 041 / 3 991	1 447 / 3 219	1 500 / 3 359	851 / 4 196
Axle loading, fork retracted, load, front / rear		kg	1 652 / 2 619	1 754 / 2 865	1 747 / 3 080	1 704 / 2 572	1 811 / 3 013	1 810 / 3 222	1 917 / 2 749	1 909 / 2 950	1 210 / 3 837
TIRES											
Tires			Vmax / Vulkollan®								
Tread width, rear	b11	mm	995						1 145		
Tilt of fork carriage forward (α) / backward (β)	α / β	deg	2 / 5								
DIMENSIONS											
Closed mast height ¹	h1	mm	2 160 – 3 400						2 160 – 4 330		
Free lift ¹	h2	mm	1 265 – 2 505						1 265 – 3 435		
Lift height ¹	h3	mm	5 000 – 8 720						5 000 – 11 510		
Height, mast extended ¹	h4	mm	5 945 – 9 665						5 945 – 12 460		
Height to top of overhead guard	h6	mm	2 186								
Seat height	h7	mm	1 087								
Height of wheel arms	h8	mm	306								
Overall length	l1	mm	2 981			3 002			3 005		
Length to face of forks	l2	mm	1 405		1 470	1 410		1 475	1 352	1 417	1 487
Overall width	b1	mm	1 120						1 270		
Fork carriage width	b3	mm	663						813		
Width across forks	b5	mm	245 / 603						245 / 753		
Distance between wheel arms / loading surfaces	b4	mm	788						938		
Reach distance		mm	426		361	441		376	503	438	368
Ground clearance, center of wheelbase	m2	mm	63								
Turning radius	Wa	mm	1 616			1 636			1 640		
PERFORMANCE											
Travel speed, with / without load		km/h	14 / 14								
Lift speed, with / without load		mm/s	420 / 600								
Lowering speed, with / without load		mm/s	550 / 550								
Maximum gradeability, with / without load		%	10 / 15								

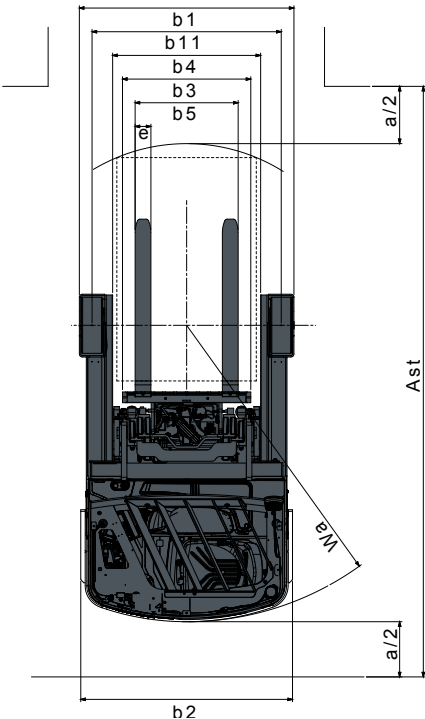
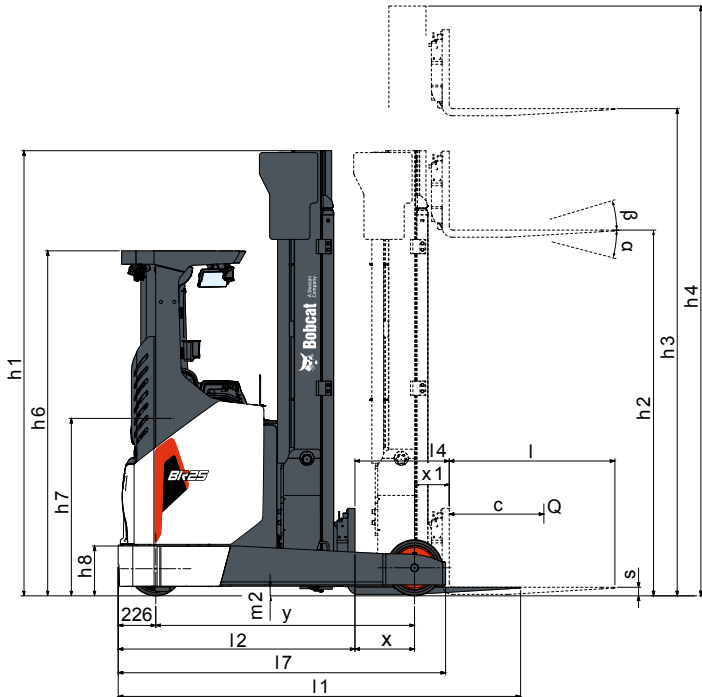
Specification values quoted in this specification sheet have been rounded. Performance may vary depending on operating conditions. Products and specifications are subject to improvement and change without prior notice.
¹ Mast dimensions refer to a range from the lowest to highest available mast with load backrest.

Note: Load capacities are based on the standard chassis without side shifter.

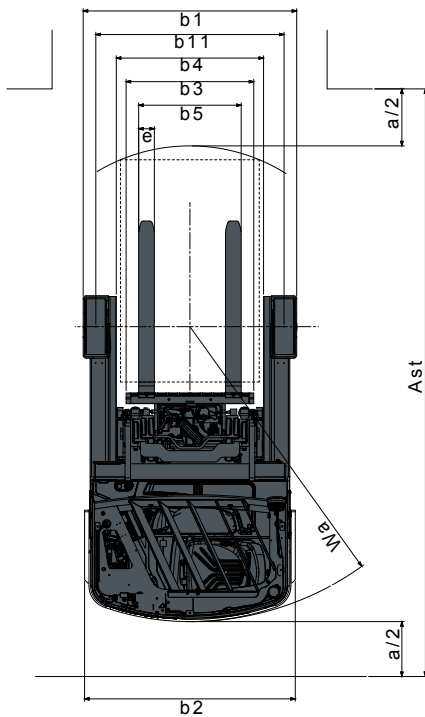
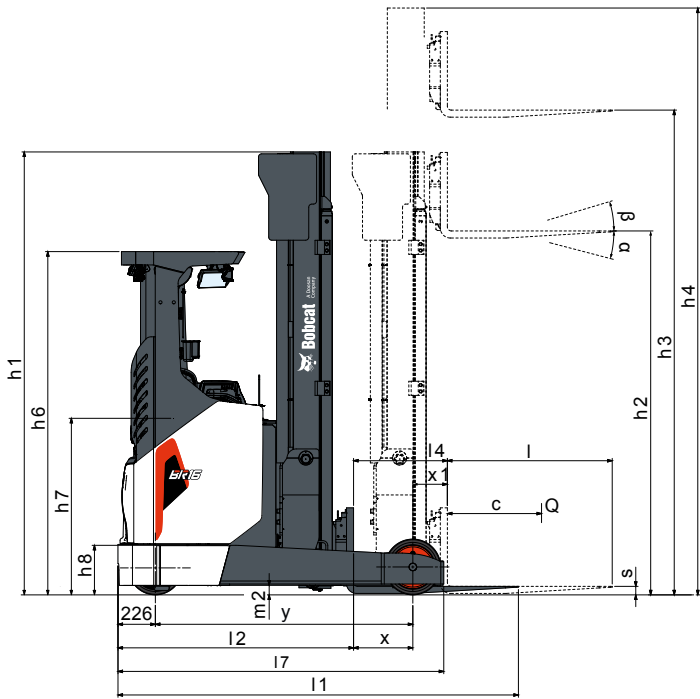
TECHNICAL DATA ACCORDING TO VDI 2198											
		Unit	BR16JW-9			BR20JW-9		BR25JW-9			
CHARACTERISTICS											
Manufacturer's type designation			420 Ah	560 Ah	700 Ah	775 Ah	930 Ah	700 Ah	775 Ah	930 Ah	
Drive			electric								
Load capacity / rated load	Q	kg	1 600			2 000		2 400		2 450	
Load center	c	mm	600								
Load distance	x	mm	307.5	242.5	172.5	197.5	140.5		317.5	242.5	
Mast pushed forward	x1	mm	215			220					
Wheelbase	y	mm	1 430			1 520		1 640			
WEIGHT											
Unload weight		kg	3 269	3 462	3 650	4 312	4 429	4 587	4 325	4 442	4 600
Axle loading, unloaded, front / rear		kg	1 986 / 1 283	2 029 / 1 433	2 054 / 1 596	2 398 / 1 914	2 394 / 2 035	2 490 / 2 097	2 525 / 1 800	2 511 / 1 931	2 611 / 1 989
Axle loading, fork advanced, load, front / rear		kg	1 512 / 3 357	1 543 / 3 519	1 554 / 3 696	1 811 / 4 501	1 794 / 4 635	1 890 / 4 697	2 012 / 4 713	1 963 / 4 879	2 062 / 4 988
Axle loading, fork retracted, load, front / rear		kg	1 994 / 2 875	1 965 / 3 097	1 911 / 3 339	2 263 / 4 049	2 184 / 4 245	2 280 / 4 307	2 550 / 4 175	2 427 / 4 415	2 526 / 4 524
TIRES											
Tires			Vmax / Vulkollan®								
Tread width, rear	b11	mm	1 145			1 199					
Tilt of fork carriage forward (α) / backward (β)	α / β	deg	2 / 5			2 / 4					
DIMENSIONS											
Closed mast height ¹	h1	mm	2 160 – 4 670			5 945 – 4 985		2 320 – 4 985			
Free lift ¹	h2	mm	1 265 – 3 435	1 265 – 3 775		1 430 – 4 095					
Lift height ¹	h3	mm	5 000 – 12 530			5 000 – 13 000					
Height, mast extended ¹	h4	mm	5 945 – 12 455	5 945 – 13 475		5 945 – 13 945					
Height to top of overhead guard	h6	mm	2 186								
Seat height	h7	mm	1 087								
Height of wheel arms	h8	mm	310			315					
Overall length	l1	mm	3 025			3 128		3 248			
Length to face of forks	l2	mm	1 352	1 417	1 487	1 560	1 617		1 560	1 635	
Overall width	b1	mm	1 270			1 360 / 1 342					
Fork carriage width	b3	mm	813								
Width across forks	b5	mm	245 / 753								
Distance between wheel arms / loading surfaces	b4	mm	938								
Reach distance		mm	523	458	388	418	361		538	463	
Ground clearance, center of wheelbase	m2	mm	63			61					
Turning radius	Wa	mm	1 660			1 758		1 878			
PERFORMANCE											
Travel speed, with / without load		km/h	14 / 14								
Lift speed, with / without load		mm/s	420 / 600			370 / 650					
Lowering speed, with / without load		mm/s	550 / 550								
Maximum gradeability, with / without load		%	10 / 15			7 / 11					

DIMENSIONS

BR25JW-9



BR16J-9



STANDARD EQUIPMENT & OPTIONS

STANDARD EQUIPMENT & OPTIONS			
	BR14/16J-9	BR14/16JW-9	BR20/25JW-9
PRODUCTIVITY			
Microprocessor control panel (Curtis controller)	✓	✓	✓
Drive wheel (Vulkollan), load wheel (Stellana)	✓	✓	✓
Drive wheel (Vulkollan), load wheel (Vulkollan)	•	•	•
Reverse steering	•	•	•
Cold storage lubricant -20°C	–	•	•
Hydraulic weight indicator	•	•	•
Auto-tilt leveling	•	•	•
Height pre-selector	•	•	•
ERGONOMICS			
Premium Grammer suspension seat	✓	✓	✓
Fingertip controls	✓	✓	✓
Adjustable steering wheel	✓	✓	✓
Large entry grip & step	✓	✓	✓
5V USB power and 12V power socket	✓	✓	✓
Joystick controls	•	•	•
Roof-top glass	–	•	•
Accessory bar	•	•	•
Document clip	•	•	•
Scan gun holder	•	•	•

STANDARD EQUIPMENT & OPTIONS			
	BR14/16J-9	BR14/16JW-9	BR20/25JW-9
SAFETY			
Guardian Stability System	✓	✓	✓
Emergency stop switch	✓	✓	✓
Strong electromagnetic service brake	✓	✓	✓
Full color display with PIN code start	✓	✓	✓
Overhead guard	✓	✓	✓
Front lights on fork side	✓	✓	✓
Flashing strobe light	•	•	•
Audible back-up alarm	•	•	•
Panoramic mirror	•	•	•
Side shift centering function	•	•	•
Load wheel brake	–	–	•
Load / drive wheel cover	•	•	•
Weight indicator	•	•	•
Fork camera	•	•	•
Fork laser	•	•	•
Mast lift speed control	•	•	•
Rear light on operator's side	•	•	•
Safety light front and / or rear	•	•	•
Zone light	•	•	•
RELIABILITY			
Robust frame & overhead guard structure	✓	✓	✓
Thermal control system protector	✓	✓	✓
Hour meter	✓	✓	✓
Curtis controller	✓	✓	✓
Battery cover	•	•	•

• = option ✓ = standard – = not available

*This list is based on factory data. Standard or optional can vary for specific countries.



5V USB power and 12V power socket



Vulkollan wheels



Overhead guard



Strobe light



Scan gun holder



Emergency switch



FINANCING OPTIONS

24, 36, OR 48-MONTH FINANCING*

Take advantage of 24, 36, or 48-month financing programs starting from **0% interest** and improve your cash flow.

Ask your dealer about the available financing offers.

340 MACHINES / **150** ATTACHMENT FAMILIES / **1** TOUGH ANIMAL



**SKID-STEER
LOADERS**



**COMPACT TRACK
LOADERS**



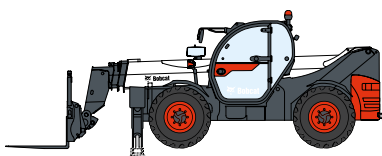
**SMALL ARTICULATED
LOADERS**



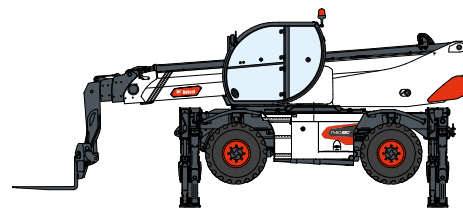
**COMPACT
EXCAVATORS**



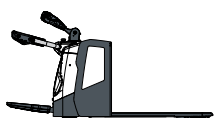
FORKLIFTS



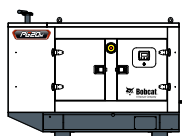
TELEHANDLERS



ROTARY TELEHANDLERS



**WAREHOUSE
EQUIPMENT**



GENERATORS



**AIR
COMPRESSORS**



**LIGHT COMPACTION
EQUIPMENT**



**MINI TRACK
LOADER**



MOWERS



ATTACHMENTS

DOOSAN

Bobcat is a Doosan Company. Doosan is a global leader in construction equipment, power & water solutions, engines, and engineering proudly serving customers and communities for more than a century. | Bobcat and the Bobcat logo are registered trademarks of Bobcat Company in the United States and various other countries. ©2025 Bobcat Company. All Rights Reserved.

www.bobcat.com

©2025 BOBCAT B4503240-EN (01-25)



Bobcat

*Financing options may vary by country and dealer. Always ask your dealer about currently available financing options. Terms and conditions may apply.

Doosan Bobcat EMEA, U Kodelky 1810, 263 12 Dobříš, Czech Republic