



**Bobcat**

*One Tough Animal*

# ELECTRIC FORKLIFTS

NXE-Series, 8 to 10-ton capacity

🌐 EMEA



# ONE TOUGH ANIMAL

► OUR MISSION

We empower operators to accomplish more, while working in the toughest conditions and tightest situations. When our customers have the will, we provide the way.

## INTRODUCTION



► BOBCAT’S HISTORY

In 1958, the Melroe Manufacturing Company introduced a compact front-end loader that quickly evolved into the M400, the world’s first true skid-steer loader. The company soon adopted what became the world famous ‘Bobcat’ brand — and its success paved the way for the global compact equipment industry we see today.

► YEARS OF EXPERIENCE

In 2021, Bobcat furthered its reach by acquiring Doosan Industrial Vehicle, increasing its capacity to provide customers with comprehensive business solutions. With Doosan’s expertise in material handling and warehouse equipment dating back to its inaugural forklift in 1968, the company has established a global presence, with 400 dealers across 93 countries.



► BOBCAT TODAY

Now, with a diversified portfolio that includes forklifts and warehouse equipment, Bobcat serves as a one-stop solution for intralogistics needs, from loading shipping containers to optimizing warehouse operations. Made according to the highest manufacturing standards, Bobcat’s material handling machines offer the precision and durability customers expect.





# TOUGH, AGILE & SAFE

► **DESIGNED TO ELEVATE YOUR BUSINESS**

The B80NS forklifts deliver robust power and high capacity. Our environment-friendly forklifts are designed to optimize performance and productivity for your business. Loaded with ergonomic features, their durability and easy maintenance help reduce total cost of ownership (TCO).



► **OUTSTANDING PERFORMANCE**

Enjoy exceptional driving performance with outstanding stability, excellent visibility, and a powerful motor system specifically designed for lifting heavy loads. **P. 6–7**



► **COMFORTABLE ALL SHIFT LONG**

Work through your shift in comfort with many quality-of-life features as standard, including an ergonomic suspension seat, a tiltable steering column, an anti-slip plate, and more. **P. 8–9**



► **SAFETY FIRST**

Protect your investment, workforce, and handled goods. The extensive line-up of safety features includes hill start assist, an electric parking brake, weight scale, and more. **P. 10–11**



► **COST-EFFECTIVE OWNERSHIP**

The robust components ensure durability and reliability, while easy access to all primary components reduces maintenance costs. **P. 12–13**





# OUTSTANDING PRODUCTIVITY



## ► POWERFUL AC DRIVING MOTOR

The 96 V AC system, paired with a robust driving motor, creates an exceptional blend of power, performance, and functionality.



## ► 360° VISIBILITY

Managing heavy loads feels effortless with 360-degree visibility and an excellent view through the roof, providing operators with a clear line of sight for smoother and more efficient tasks.



## ► CUTTING COSTS, NOT CORNERS

This series offers a reduced total cost of ownership (TCO), helping you save thousands of euros over the machine's lifetime. A smart investment for both your budget and the environment.



## ► READY FOR DUTY

Designed to power through an entire shift, these forklifts come with a flexible battery exchange system that keeps things running smoothly and offers a range of battery capacities to fit your needs.



# COMFORT & CONTROLS



## ► SPACIOUS OPERATOR COMPARTMENT

The cab's ample leg room, adjustable steering column, and ergonomic operator pedals ensure ease of entry and exit for the operator.



## ► DELUXE SUSPENSION GRAMMER SEAT

The deluxe suspension seat offers a larger seat back angle, extended seat travel length, and operator's weight resistance on the front side, allowing for multiple adjustments to create the most comfortable seating experience.



## ► LOW SEAT POSITION

The operator can enjoy plenty of space and head room for easy on/off access.



## ► LOW NOISE LEVELS

Enjoy a quiet work environment in the full cab – the AC motor provides low noise and vibration for operator comfort.

## ► FINGERTIP CONTROL



Choose between the 2-axis cross lever or ergonomic fingertips for precise control and minimal fatigue during an extended shift.

## ► REAR-VIEW CAMERA & DISPLAY



Benefit from additional confidence when reversing with a rear-view camera and a color display that's easy to read outdoors.

## ► MAGNIFICA CAB FOR EXTRA COMFORT



Step into the luxurious Magnifica cab, featuring ergonomic elements like fingertip controls, a deluxe Grammer seat, and HVAC system. Get ready for ultimate comfort and a smooth driving experience.





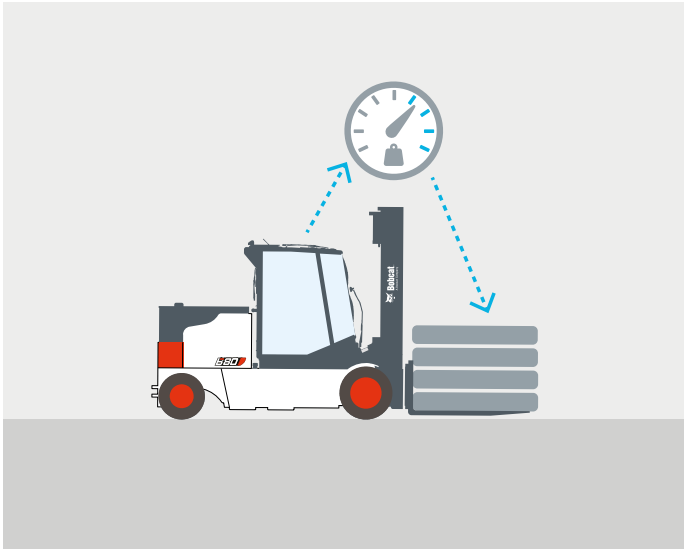
# SAFETY IN EVERY MOVE

▶ **ADVANCED PROTECTION FOR YOU AND YOUR OPERATION**

Bobcat forklifts have safety embedded in their DNA. Packed with tons of features that protect your health and your investment, these machines give you peace of mind in every task, every day.

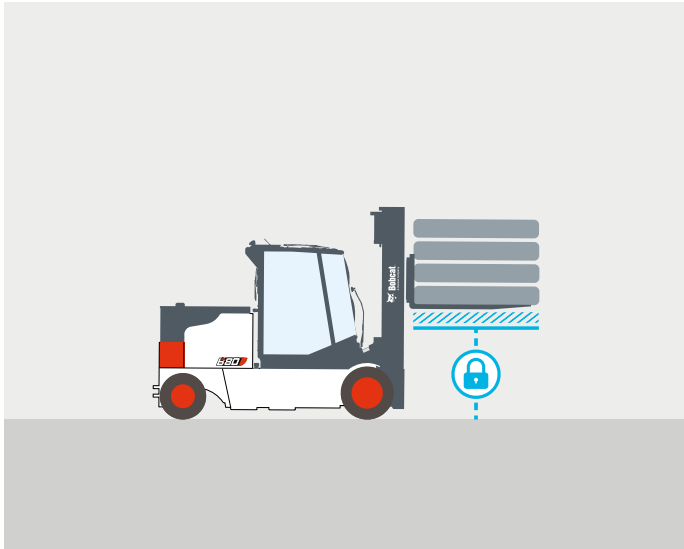
▶ **WEIGHT SCALE**

With the help of an integrated weight scale, operators can prevent truck overload, keeping the workplace safer and more secure.



▶ **MAST LOWERING INTERLOCK & TILT LOCK**

The Mast Lowering Interlock & Tilt Lock system prevents unintentional lowering and tilting of the mast, protecting both the truck and the load.



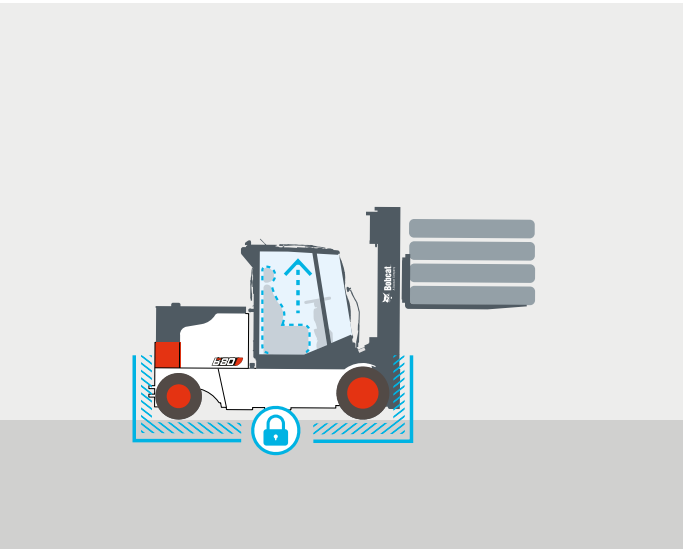
▶ **BACKUP ALARM**

The Backup Alarm emits a warning signal when the operator is driving in reverse, alerting those in the nearby vicinity.



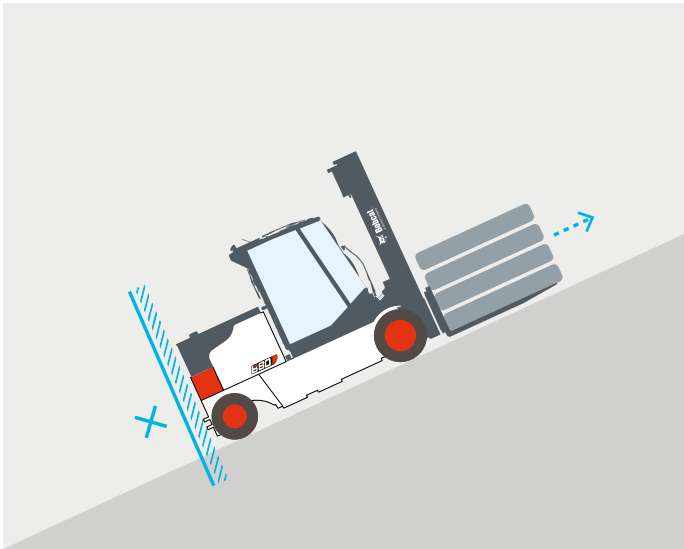
▶ **ELECTRIC PARKING BRAKE (EPB)**

The Electric Parking Brake engages automatically to keep the vehicle stationary when the operator exits the seat.



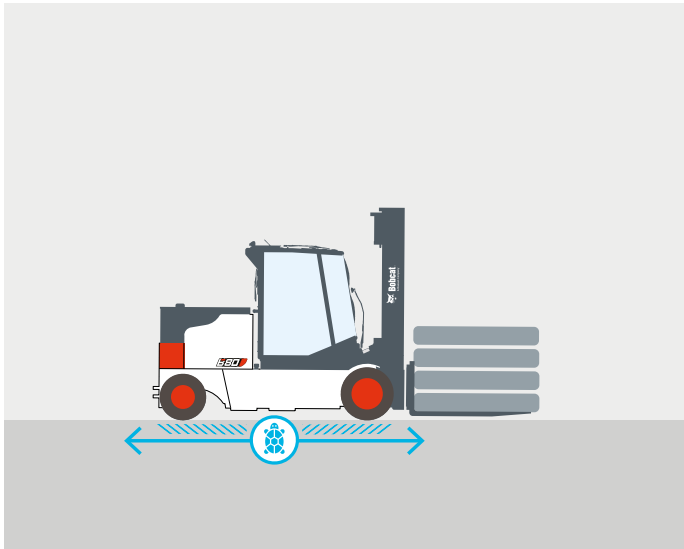
▶ **HILL START ASSIST (HSA)**

Our Hill Start Assist helps prevent rollback on inclines by automatically applying the brakes for a few seconds before engaging the electric parking brake. This smooth transition keeps the operator in control during uphill starts, making the work more efficient and worry-free.



▶ **TURTLE MODE**

Activating Turtle Mode ensures safe navigation in challenging warehouse operations by automatically reverting the forklift to pre-set travel speeds without compromising lifting speed.



▶ **BRIGHTER AND SAFER**

Experience a brighter, safer, and more efficient workday with our front lights, combination lamps, and LED road lights.



▶ **REAR-VIEW MIRROR**

The Rear-View Mirror provides more visibility, preventing accidents while reversing, avoiding collisions with objects and pedestrians and ensuring a safer work environment.



# BUILT TO LAST

► EXCELLENT RELIABILITY

Bobcat high-capacity electric forklifts are ruggedly built for maximum uptime, low total cost of ownership (TCO), and unwavering dependability. This is all made possible through a reliable AC controller and components, an effortless battery changing system, and a tiltable operator compartment for easy inspection.



THERE'S NO TIME  
FOR DOWNTIME.  
STAND UP TO EVERY TASK  
THAT COMES YOUR WAY,  
DAY AFTER DAY.

## 1.5 YEAR WARRANTY

► WARRANTY

Bobcat develops every machine to the highest standards of quality and durability. That's why our standard warranty provides 18 months or 1 500 operating hours (whichever occurs first) of coverage.



► PROTECTION PLUS EXTENDED WARRANTY

Enjoy total peace of mind with Protection Plus extended warranty. Providing the same level of protection as the standard warranty, Protection Plus also reflects different customer needs and expectations by offering a choice of durations and annual operating hours.

► EXTENSIVE DEALER NETWORK

You can rely on our network of dealers and service partners who are always ready to help you.

► BOBCAT GENUINE PARTS

Quality components delivered to our dealers guarantee that all of our equipment is built to last, withstand the toughest conditions, and provide reliable performance.

MAIN SPECIFICATIONS

TECHNICAL DATA ACCORDING TO VDI 2198					
		Unit	B80NSC	B80NS	B100NS
CHARACTERISTICS					
Power unit			battery		
Load capacity/rated load	Q	kg	8 000		10 000
Load center	c	mm	600	900	600
Load distance, center of drive axle to fork	x	mm	695		
Wheelbase	y	mm	2 835		
WEIGHT					
Service weight (with min. weight of battery)		kg	13 270	13 700	13 710
Tread, front	b11	mm	1 428 – 1 490	1 490	
Tread, rear	b12	mm	1 310		
DIMENSIONS					
Tilt of mast / fork carriage forward / backward	α/β	°	5 / 8		
Height, mast lowered <sup>1</sup>	h1	mm	2 730 – 4 000		
Free lift <sup>1</sup>	h2	mm	1 480 – 2 350		
Lift height <sup>1</sup>	h3	mm	3 300 – 7 000		
Height, mast extended <sup>1</sup>	h4	mm	4 550 – 8 330		
Height of overhead guard	h6	mm	2 755		
Height of seat	h7	mm	1 405		
Overall length	l1	mm	5 100	5 700	5 100
Length to forkface	l2	mm	3 900		
Overall width	b1/b2	mm	1 760 – 1 930	1 930	
Fork dimensions	s/e/l	mm	60 × 200 × 1 200	70 × 200 × 1 800	70 × 200 × 1 200
Ground clearance, unloaded, below mast	m1	mm	180		
Ground clearance, center of wheelbase	m2	mm	155		
External turning radius	Wa	mm	3 150		
PERFORMANCE					
Travel speed, loaded / unloaded		km/h	14 / 15	13 / 15	13 / 14
Lift speed, loaded / unloaded		mm/s	380 / 420		310 / 330
Lowering speed, loaded / unloaded		mm/s	500 / 400		
Max. gradeability, loaded / unloaded		%	11 / 19		9 / 17
Service brake			hydraulic		
ELECTRIC ENGINE					
Battery voltage, nominal capacity k5		V/Ah	96 / 1 085 – 1 550		
Type of drive control			electronic in AC		
ADDITIONAL DATA					
Noise level at the operator's ear		dB	70		

Specification values quoted in this specification sheet have been rounded. Performance may vary depending on operating conditions. Products and specifications are subject to improvement and change without prior notice.  
<sup>1</sup> Mast dimensions refer to a range from the lowest to highest available mast with load backrest.

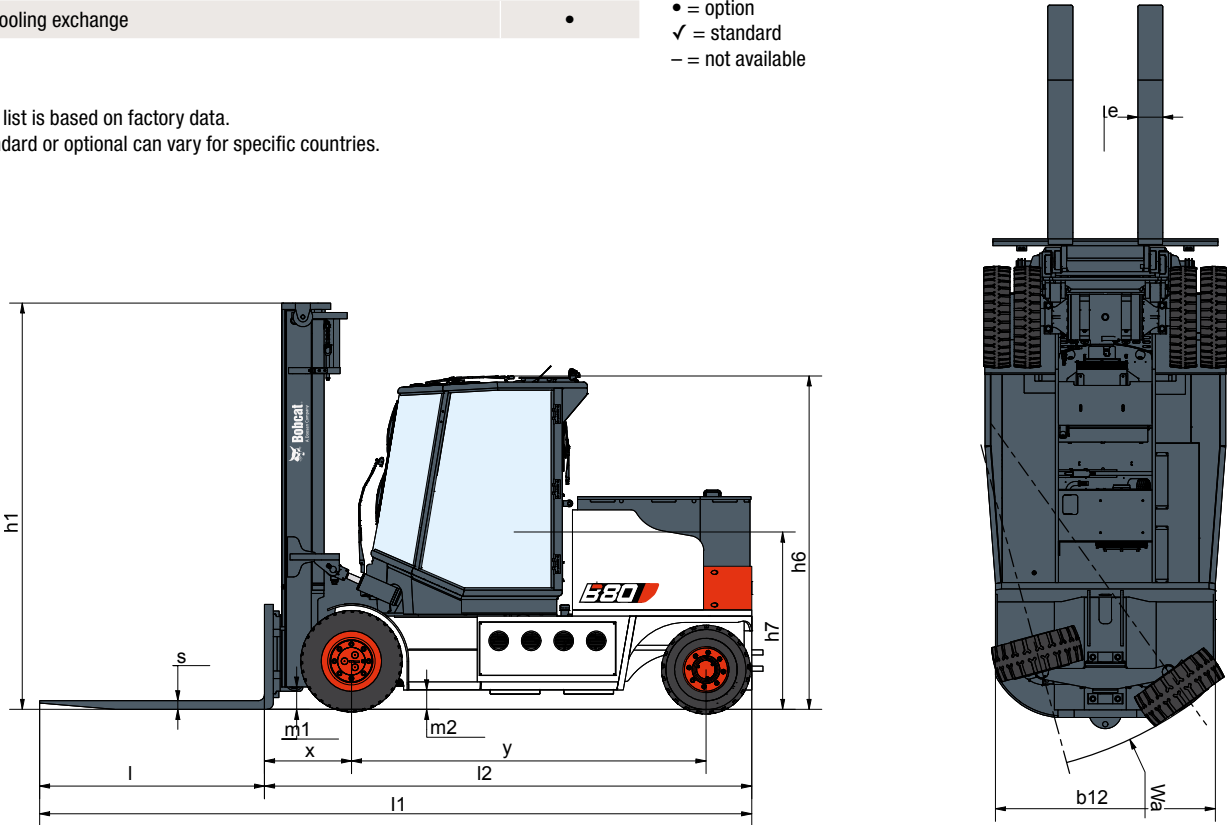
Note: Load capacities are based on the standard chassis without side shifter.

STANDARD EQUIPMENT & OPTIONS

STANDARD EQUIPMENT & OPTIONS		STANDARD EQUIPMENT & OPTIONS	
SAFETY		ERGONOMICS	
OSS (Operator Sensing System)	✓	Easy-to-read instrument panel	✓
Easy entry grab bar	✓	Overhead guard	✓
Large entry step with anti-slip pattern	✓	Adjustable steering column	✓
Electronic parking brake	✓	Rear grab bar with horn	✓
Front LED Lights	✓	Grammer suspension seat	✓
Emergency switch	✓	Steering wheel knob	✓
Backup alarm	✓	USB port	✓
Rear-view camera with flat color display	✓	Magnifica cab – tiltable full cab	•
Seat belt interlock	✓	Modular cabs type A, B, C & D	•
Extra LED lights in front	•	Heating ventilation module (HVM)	•
Blue safety light front and/or rear	•	Fingertip console	•
Panoramic and/or side mirrors	•	Mini finger axis	•
Amber strobe lights	•	Full cab (tiltable)	•
Weight scale	•	Grammer air suspension seat	•
Weight indicator (hydraulic sensing type)	•	Heater & air conditioner (HVAC)	•
Orange seat belt	•	Audio (DAB type radio, MP3)	•
Combination lights	•	Tiltable overhead guard	•
Red front safety light	•	PRODUCTIVITY	
Hydraulic accumulator	•	Excellent visibility through mast	✓
RELIABILITY		Smooth and responsive acceleration	✓
Full AC system chassis	✓	Power steering	✓
IP65-rated controller	✓	Double pedal with brake in the center	•
Robust frame structure & overhead guard	✓	Auto tilt leveling	•
Oil-cooled disc brakes (ODB)	✓	SERVICEABILITY	
ZAPI electric motor	✓	Easy battery changing	✓
2 separate DC-DC converters	✓	EasyView	✓
Under protection (belly plate)	•		
Oil cooling exchange	•		

\*This list is based on factory data.  
Standard or optional can vary for specific countries.

- = option
- ✓ = standard
- = not available





# FINANCING OPTIONS

## 24, 36, OR 48-MONTH FINANCING\*

Take advantage of 24, 36, or 48-month financing programs starting from **0% interest** and improve your cash flow.

Ask your dealer about the available financing offers.

**340** MACHINES / **150** ATTACHMENT FAMILIES / **1** TOUGH ANIMAL



**SKID-STEER  
LOADERS**



**COMPACT TRACK  
LOADERS**



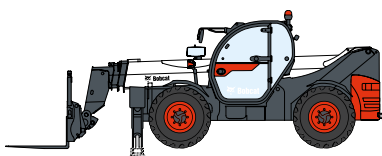
**SMALL ARTICULATED  
LOADERS**



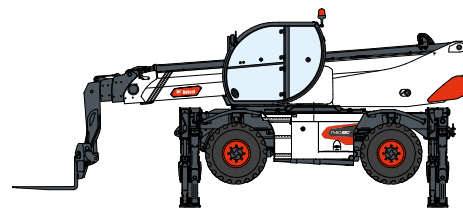
**COMPACT  
EXCAVATORS**



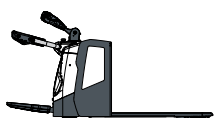
**FORKLIFTS**



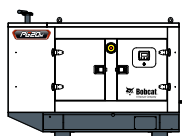
**TELEHANDLERS**



**ROTARY TELEHANDLERS**



**WAREHOUSE  
EQUIPMENT**



**GENERATORS**



**AIR  
COMPRESSORS**



**LIGHT COMPACTION  
EQUIPMENT**



**MINI TRACK  
LOADER**



**MOWERS**



**ATTACHMENTS**

**DOOSAN**

**Bobcat is a Doosan Company.** Doosan is a global leader in construction equipment, power & water solutions, engines, and engineering proudly serving customers and communities for more than a century. | Bobcat and the Bobcat logo are registered trademarks of Bobcat Company in the United States and various other countries. ©2024 Bobcat Company. All Rights Reserved.

[www.bobcat.com](http://www.bobcat.com)

©2024 BOBCAT B4503230-EN (10-24)



# Bobcat

\*Financing options may vary by country and dealer. Always ask your dealer about currently available financing options. Terms and conditions may apply.

Doosan Bobcat EMEA, U Kodelky 1810, 263 12 Dobříš, Czech Republic