



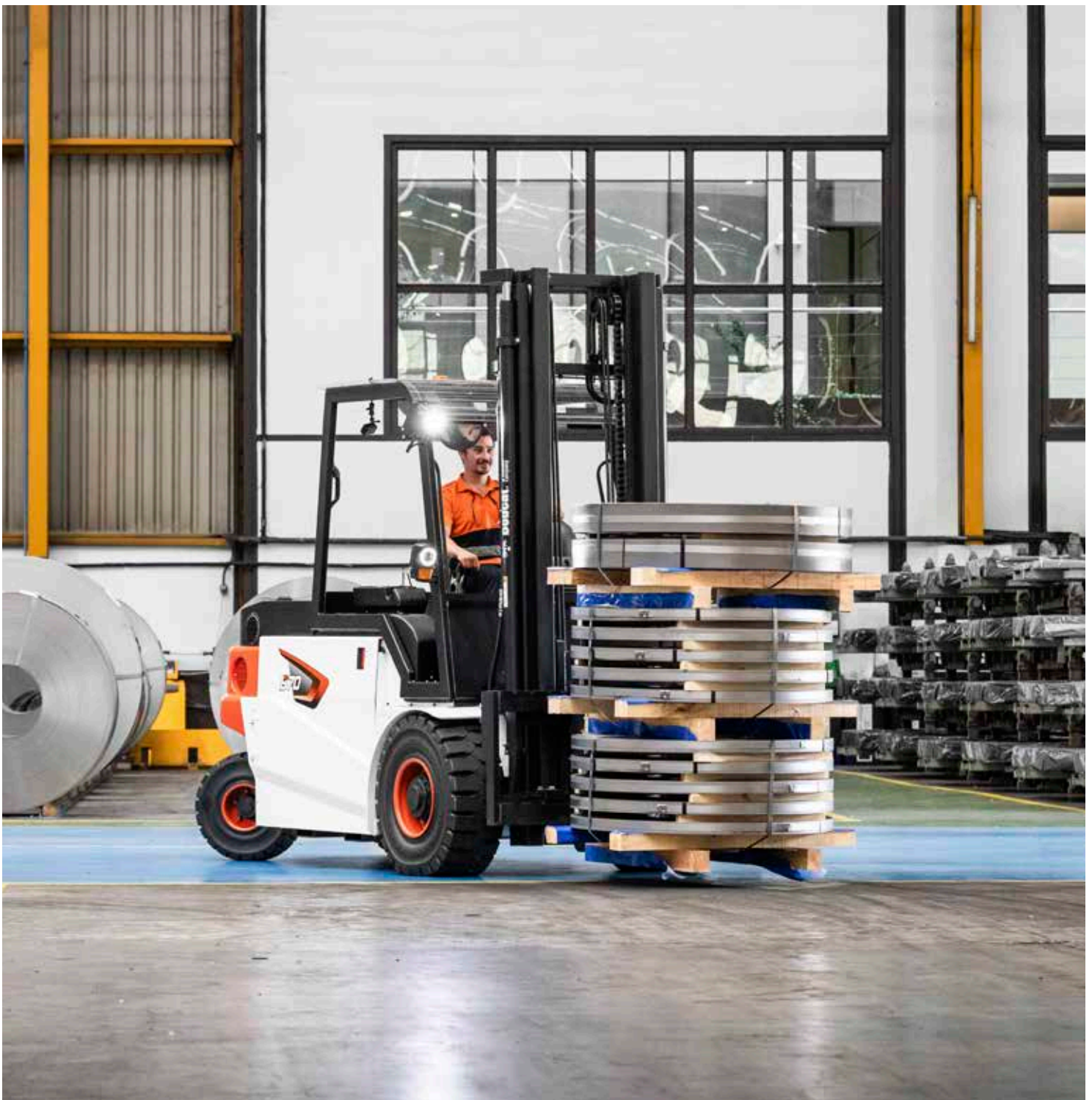
Bobcat

One Tough Animal

ELECTRIC FORKLIFTS

NXE-Series, 6 to 8-ton capacity

🌐 EMEA



ONE TOUGH ANIMAL

► OUR MISSION

We empower operators to accomplish more, while working in the toughest conditions and tightest situations. When our customers have the will, we provide the way.



► BOBCAT'S HISTORY

In 1958, the Melroe Manufacturing Company introduced a compact front-end loader that quickly evolved into the M400, the world's first true skid-steer loader. The company soon adopted what became the world famous 'Bobcat' brand—and its success paved the way for the global compact equipment industry we see today.

► YEARS OF EXPERIENCE

In 2021, Bobcat furthered its reach by acquiring Doosan Industrial Vehicle, increasing its capacity to provide customers with comprehensive business solutions. With Doosan's expertise in material handling and warehouse equipment dating back to its inaugural forklift in 1968, the company has established a global presence, with 400 dealers across 93 countries.



► BOBCAT TODAY

Now, with a diversified portfolio that includes forklifts and warehouse equipment, Bobcat serves as a one-stop solution for intralogistics needs, from loading shipping containers to optimizing warehouse operations. Made according to the highest manufacturing standards, Bobcat's material handling machines offer the precision and durability customers expect.



TOUGH, AGILE & SAFE

► ENDURING POWER, EVERY HOUR

Our electric forklifts – equipped with AC motors, power steering, and regenerative braking – are meticulously designed to optimize performance. With a complete range of ergonomic features, water resistance, and reduced noise levels, these forklifts deliver all-day comfort and dependability at a competitive price.



► OUTSTANDING PERFORMANCE

Enjoy outstanding driving performance with a small turning radius, excellent visibility, and a well-designed, powerful motor system, specifically tailored for handling heavy loads.
P. 6–7



► COMFORTABLE ALL SHIFT LONG

Work through your shift in comfort with many quality-of-life features as standard, including an ergonomic suspension seat, tiltable steering column, anti-slip plate, and more.
P. 8–9



► SAFETY FIRST

Protect your investment, workforce, and goods with the extensive lineup of safety features including hill start assist, automatic speed control, and more.
P. 10–11



► BUILT TOUGH

Our durable, reliable components and easy access to key parts keep ownership costs low and maintenance simple.
P. 12–13



OUTSTANDING PRODUCTIVITY



▶ POWERFUL AC DRIVING MOTOR
The 80V AC system, combined with a robust dual-drive motor, delivers an exceptional blend of power, performance, and functionality.



▶ 360° VISIBILITY
Handle heavy loads with 360-degree visibility and a low cowl height, offering operators a clear view for smooth and efficient operations.



▶ SMALL TURNING RADIUS
With the smallest turning radius in its class, our electric forklift delivers outstanding handling and flexibility, easily outperforming competitors and IC models in tight and confined spaces.



▶ OIL-COOLED DISC BRAKES
Enjoy oil-cooled disc brakes for better braking and faster cycles, giving you the confidence to navigate and stop quickly. This enhancement speeds up task completion significantly and boosts overall productivity.

COMFORT & CONTROLS



► **SPACIOUS OPERATOR COMPARTMENT**

The cab's ample leg room, adjustable steering column, and ergonomic operator pedals provide a comfortable working environment for the operator.



► **DELUXE SUSPENSION GRAMMER SEAT**

Easily adjust the angle, position, and front-side weight resistance of your deluxe suspension seat to find the perfect position for your work.



► **LOW SEAT POSITION**

With the low seat position, operators can easily hop on and off the forklift. Plus, the generous space and head room provide plenty of room for comfort, allowing operators to move freely while they work.



► **REAR CAMERA DISPLAY**

Stay comfortable and aware of your surroundings with a rear-view camera that automatically activates in reverse and streams directly to your in-cab display.

► **FINGERTIP CONTROL**



Choose between a 2-axis cross lever or ergonomic fingertip controls for precise handling and less fatigue during long shifts.

► **EASY ACCESS**



This forklift makes getting in and out easy and safe with a low step height, a convenient grab bar, and an anti-slip step plate.

► **USB SOCKET AND RADIO**



Plug in and power up your workflow with USB connectivity for quick data access. And keep the team morale high with an integrated radio and MP3 player for some added entertainment.



SAFETY IN EVERY MOVE

▶ **ADVANCED PROTECTION FOR YOU AND YOUR OPERATION**

Bobcat forklifts have safety embedded in their DNA. Packed with tons of features that protect your health and your investment, these machines give you peace of mind in every task, every day.

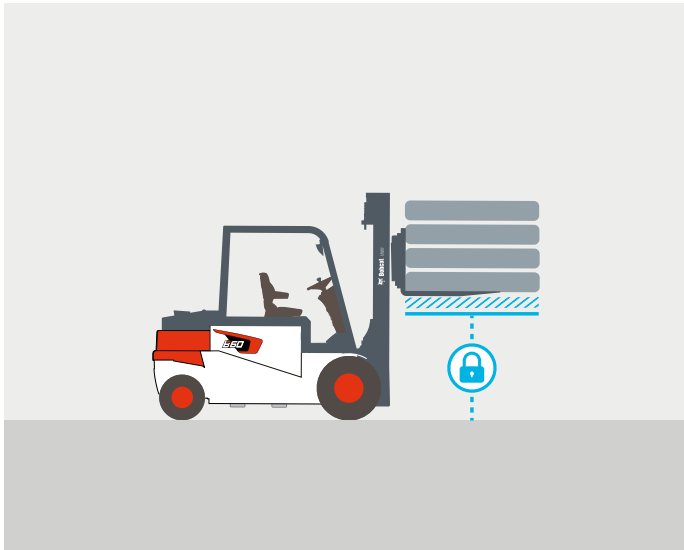
▶ **WEIGHT SCALE**

With the help of an integrated weight scale, operators can prevent truck overload, keeping the workplace safer and more secure.



▶ **MAST LOWERING INTERLOCK & TILT LOCK**

The Mast Lowering Interlock & Tilt Lock system prevents unintentional lowering and tilting of the mast, protecting both the truck and the load.



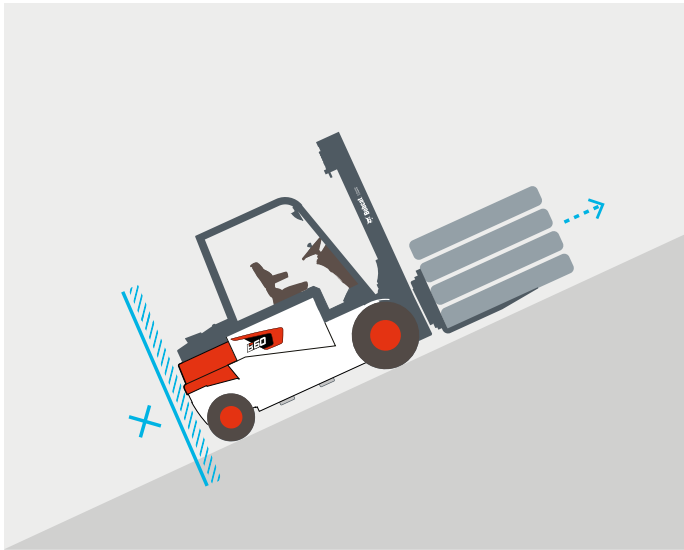
▶ **BACKUP ALARM**

The Backup Alarm emits a warning signal when the operator is driving in reverse, alerting those in the nearby vicinity.



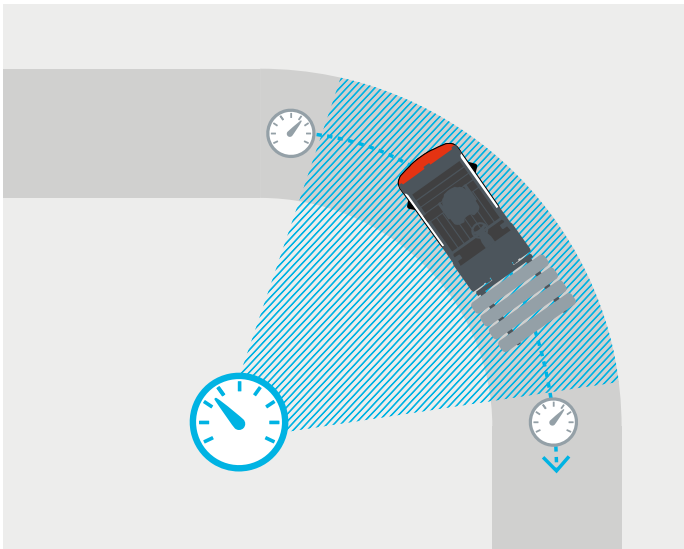
▶ **HILL START ASSIST (HSA)**

Our Hill Start Assist helps prevent rollback on inclines by automatically applying the brakes for a few seconds before engaging the electric parking brake. This smooth transition keeps the operator in control during uphill starts, making the work more efficient and worry-free.



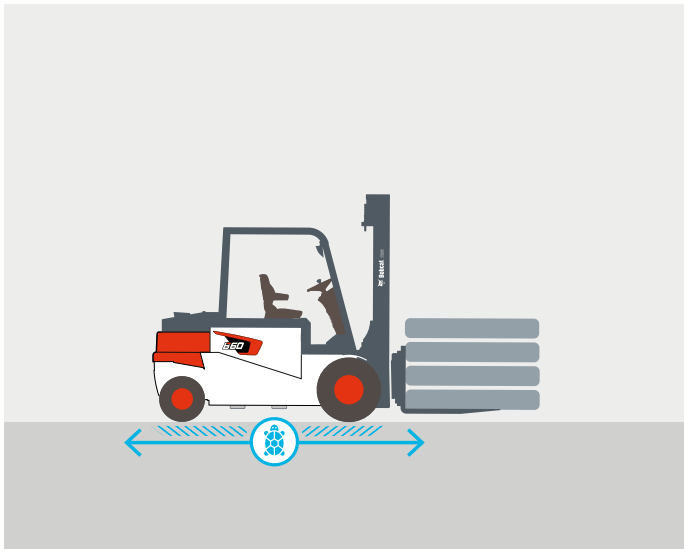
▶ **AUTOMATIC SPEED CONTROL**

The Automatic Speed Control manages travel speeds, slowing the truck down when cornering to reduce the risk of accidents or damage.



▶ **TURTLE MODE**

Activating Turtle Mode ensures safe navigation in challenging warehouse operations by automatically reverting the forklift to pre-set travel speeds while maintaining lift speed.



▶ **BRIGHTER AND SAFER**

Experience a brighter, safer, and more efficient workday with our front lights, combination lamps, and LED road lights.



▶ **PANORAMIC MIRROR**

The panoramic rear-view mirror offers a clearer view while reversing, helping you avoid obstacles and accidents and keeping your workspace safe.



BUILT TO LAST

► EXCELLENT RELIABILITY

The Bobcat NXE-Series high-capacity electric forklifts are built tough for maximum uptime, low total cost of ownership (TCO), and consistent reliability. Thanks to a dependable AC controller and an easy battery-changing system, you can count on these forklifts to perform day in and day out.



1.5 YEAR WARRANTY

► WARRANTY

Bobcat develops every machine to the highest standards of quality and durability. That's why our standard warranty provides 18 months or 1 500 operating hours (whichever occurs first) of coverage.

THERE'S NO TIME FOR DOWNTIME. STAND UP TO EVERY TASK THAT COMES YOUR WAY, DAY AFTER DAY.



► PROTECTION PLUS EXTENDED WARRANTY

Enjoy total peace of mind with Protection Plus extended warranty. Providing the same level of protection as the standard warranty, Protection Plus also reflects different customer needs and expectations by offering a choice of durations and annual operating hours.

► EXTENSIVE DEALER NETWORK

You can rely on our network of dealers and service partners who are always ready to help you.

► BOBCAT GENUINE PARTS

Quality components delivered to our dealers guarantee that all of our equipment is built to last, withstand the toughest conditions and provide reliable performance.

MAIN SPECIFICATIONS

TECHNICAL DATA ACCORDING TO VDI 2198					
		Unit	B60NX	B70NX	B80NX
CHARACTERISTICS					
Drive			battery		
Load capacity, rated load	Q	kg	6 000	7 000	8 000
Load center	c	mm	600		
Load distance, center of drive axle to fork	x	mm	650		
Wheelbase	y	mm	2 110	2 210	2 310
WEIGHT					
Service weight (with min. weight of battery)		kg	10 530	11 430	12 860
Tread, front	b11	mm	1 235 / 1 422		1 318 / 1 422
Tread, rear	b12	mm	1 150		1 160
DIMENSIONS					
Tilt of mast, fork carriage forward / backward	α/β	°	5 / 8		
Height, mast lowered ¹	h1	mm	2 530 – 3 815		2 730 – 4 000
Free lift ¹	h2	mm	1 325 – 2 350		
Lift height ¹	h3	mm	3 300 – 7 000	3 300 – 6 900	3 300 – 7 000
Height, mast extended ¹	h4	mm	4 365 – 7 905	4 535 – 7 905	4 550 – 8 330
Height of overhead guard	h6	mm	2 465		
Height of seat	h7	mm	1 415		
Overall length	l1	mm	4 325	4 425	4 525
Length to forkface	l2	mm	3 125	3 225	3 325
Overall width	b1/b2	mm	1 535 / 1 900		1 650 / 1 900
Fork dimensions	s/e/l	mm	60 × 150 × 1 200		60 × 200 × 1 200
Ground clearance, unloaded, below mast	m1	mm	180		
Ground clearance, center of wheelbase	m2	mm	210		
External turning radius	Wa	mm	2 715	2 915	3 215
PERFORMANCE					
Travel speed, with / without load		km/h	15 / 15		
Lift speed, with / without load		mm/s	280 / 320	250 / 320	220 / 320
Lowering speed, with / without load		mm/s	400 / 300		
Max. gradeability, with / without load		%	17 / 18	15 / 17	13 / 16
Service brake			hydraulic		
ELECTRIC ENGINE					
Battery voltage, nominal capacity K5		V/Ah	80 / 930 – 1 085		
Battery weight		kg	2 555		
ADDITIONAL DATA					
Type of drive control			electronic in AC		
Noise level at operators ear		dB	70		

Specification values quoted in this specification sheet have been rounded. Performance may vary depending on operating conditions. Products and specifications are subject to improvement and change without prior notice.
¹ Mast dimensions refer to a range from the lowest to highest available mast with load backrest.

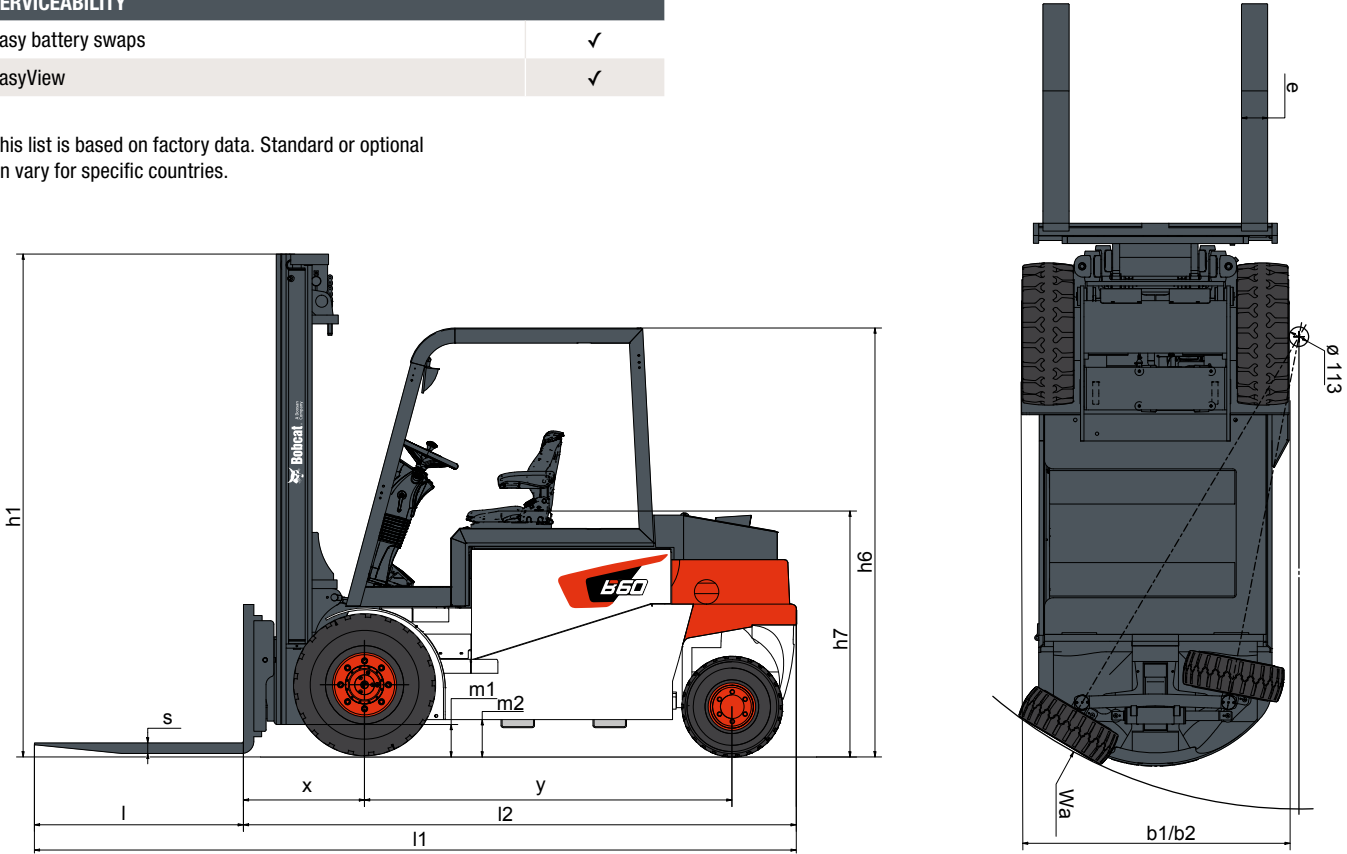
Note: Load capacities are based on the standard chassis without side shifter.

STANDARD EQUIPMENT & OPTIONS

STANDARD EQUIPMENT & OPTIONS		STANDARD EQUIPMENT & OPTIONS	
SAFETY		ERGONOMICS	
OSS (Operator Sensing System)	✓	Easy-to-read instrument panel	✓
Easy entry grab bar	✓	Overhead guard	✓
Large entry step with anti-slip pattern	✓	Adjustable steering column	✓
Electronic parking brake	✓	Grammer suspension seat	✓
Front LED lights	✓	Steering wheel knob	✓
Cornering speed control	✓	USB port	✓
Emergency switch	✓	Fingertip console	•
Backup alarm	✓	Mini finger axis	•
Amber strobe lights	✓	Modular cab type B/C/D	•
Seat belt interlock	•	Rear grab bar with horn	•
Extra front LED lights	•	Grammer, air suspension seat	•
Rear-view camera with full color display	•	Heating ventilation module (HVM)	•
Safety light front and/or rear	•	Heater & air conditioner (HVAC)	•
Panoramic and/or side mirrors	•	Audio (DAB type radio, MP3)	•
Weight scale (load cell type)	•	RELIABILITY	
Weight indicator (hydraulic sensing type)	•	Full AC system chassis	✓
Orange seat belt	•	IP65-rated controller	✓
Combination lights	•	Robust frame structure & overhead guard	✓
Red front safety light	•	Oil-cooled disc brakes (ODB)	✓
Hydraulic accumulator	•	Under protection (belly plate)	•
PRODUCTIVITY		Oil cooling exchange	•
Excellent visibility through mast	✓		
Smooth and responsive acceleration	✓		
Double pedal with brake in the center	•		
Auto-tilt leveling	•		
SERVICEABILITY			
Easy battery swaps	✓		
EasyView	✓		

*This list is based on factory data. Standard or optional can vary for specific countries.

- = option
- ✓ = standard
- = not available



FINANCING OPTIONS

24, 36, OR 48-MONTH FINANCING*

Take advantage of 24, 36, or 48-month financing programs starting from **0% interest** and improve your cash flow.

Ask your dealer about the available financing offers.

340 MACHINES / **150** ATTACHMENT FAMILIES / **1** TOUGH ANIMAL



**SKID-STEER
LOADERS**



**COMPACT TRACK
LOADERS**



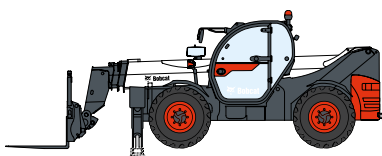
**SMALL ARTICULATED
LOADERS**



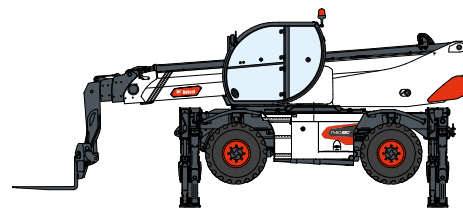
**COMPACT
EXCAVATORS**



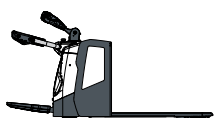
FORKLIFTS



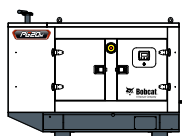
TELEHANDLERS



ROTARY TELEHANDLERS



**WAREHOUSE
EQUIPMENT**



GENERATORS



**AIR
COMPRESSORS**



**LIGHT COMPACTION
EQUIPMENT**



**MINI TRACK
LOADER**



MOWERS



ATTACHMENTS

DOOSAN

Bobcat is a Doosan Company. Doosan is a global leader in construction equipment, power & water solutions, engines, and engineering proudly serving customers and communities for more than a century. | Bobcat and the Bobcat logo are registered trademarks of Bobcat Company in the United States and various other countries. ©2024 Bobcat Company. All Rights Reserved.

www.bobcat.com

©2024 BOBCAT B4503220-EN (10-24)



Bobcat

*Financing options may vary by country and dealer. Always ask your dealer about currently available financing options. Terms and conditions may apply.

Doosan Bobcat EMEA, U Kodelky 1810, 263 12 Dobříš, Czech Republic