



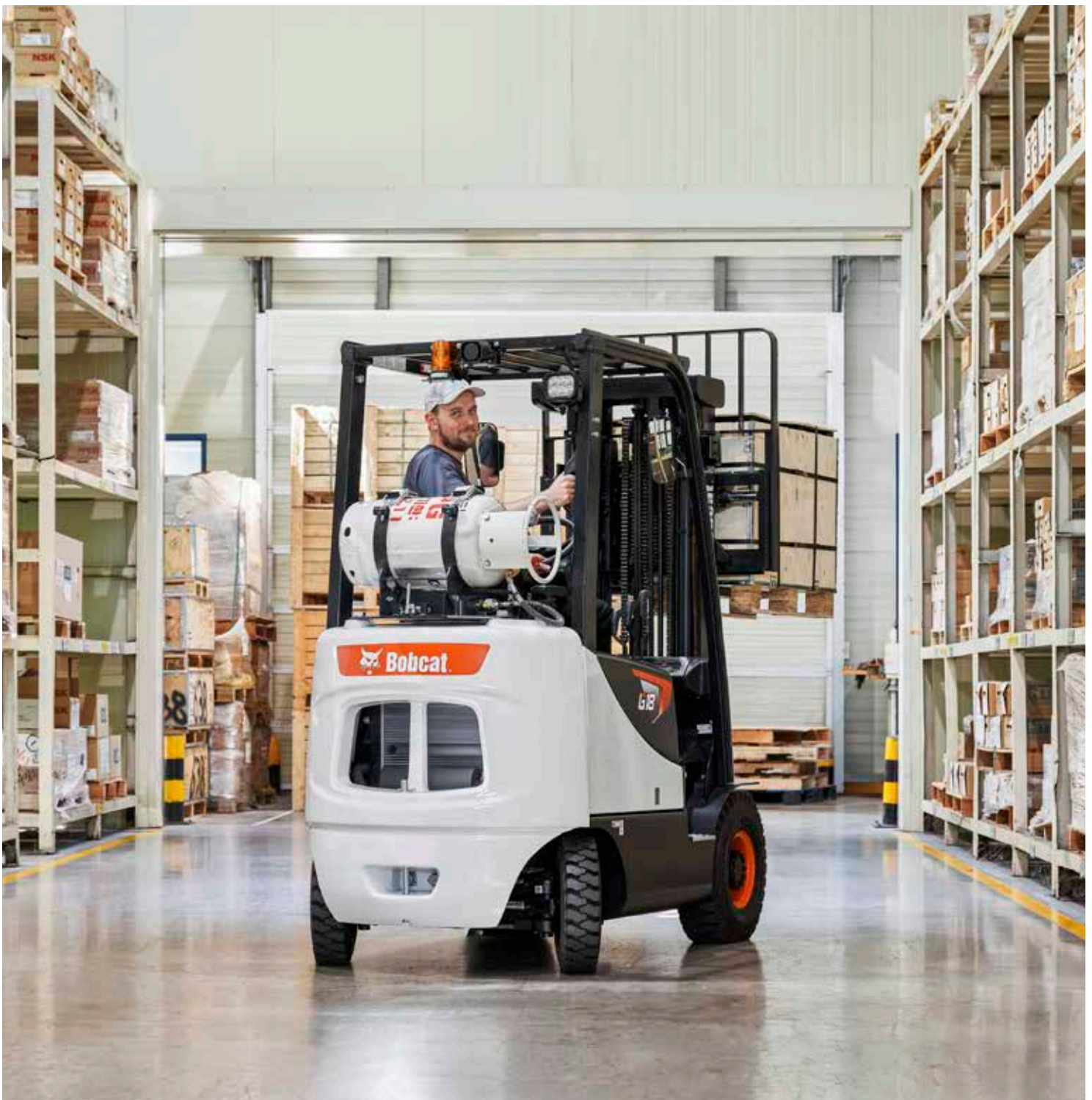
**Bobcat®**

*One Tough Animal.*

# LPG FORKLIFTS

Pro 5-Series, Pneumatic, 1.5 to 2 ton capacity

🌐 Europe



# ONE TOUGH ANIMAL

## ► OUR MISSION

We empower operators to accomplish more, while working in the toughest conditions and tightest situations. When our customers have the will, we provide the way.

## INTRODUCTION

### ► BOBCAT'S HISTORY

In 1958, Melroe Manufacturing Company introduced a compact front-end loader that evolved quickly into the M400, the world's first true skid steer loader. The company soon adopted what became the world-famous 'Bobcat' brand – and its success paved the way for the global compact equipment industry we know today.



### ► YEARS OF EXPERIENCE

In 2021, Bobcat expanded its portfolio by acquiring Doosan Industrial Vehicle. This specialist in material handling equipment constructed its first forklift in 1968 and went on to establish a global presence with 400 dealers in 93 countries.



### ► BOBCAT TODAY

Bobcat is expanding its portfolio with the addition of forklifts and reach trucks for the material handling industry. Offering a comprehensive line-up that will meet all your intra-logistics needs. Bobcat forklifts and reach trucks are produced in our factory in Korea, while our premium quality warehouse equipment is made in Germany.





# TOUGH, AGILE & SAFE

## ► DESIGNED FOR PRODUCTIVITY

With high-performance engines, intuitive controls, superior operator comfort, and a host of safety features, Bobcat's G15S-5 Series is ready to enhance your business's productivity while maintaining cost-effectiveness through a low cost of ownership.



## ► ULTIMATE PRODUCTIVITY

Do more every day, thanks to the high-performance yet efficient HMC LP 2.4 l engine – with 37.4 kW of power and the best-in-class travel and lifting speeds. **P. 6–7**



## ► COMFORTABLE ALL SHIFT LONG

Work through your shift in comfort with many quality-of-life features as standard: ergonomic seat, easy-to-read instrument panel, tiltable steering column, anti-slip plate, and more. **P. 8–9**



## ► SAFETY FIRST

Protect your investment, workforce, and handled goods. Excellent all-around visibility, reliable oil-cooled brakes, and a host of other safety features come as standard. **P. 10–11**



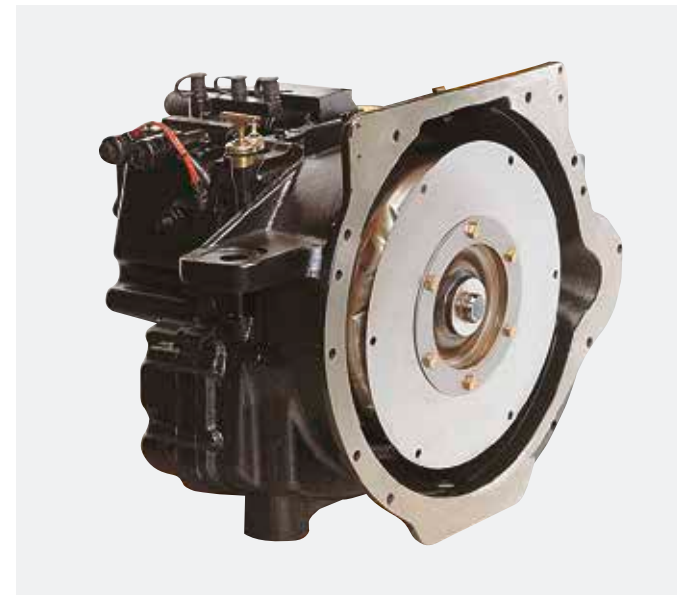
## ► MAXIMUM UPTIME

Reduce your total ownership costs by extending service intervals and utilizing high-quality Bobcat genuine parts and consumables which contribute to smoother and longer-lasting machine performance. **P. 12–13**





## OUTSTANDING PRODUCTIVITY



### EFFORTLESS DIRECTIONAL CHANGES

The thoroughly tested powershift transmission controls the clutch oil pressure precisely, ensuring smooth shifts between forward and reverse. This careful control helps prevent transmission damage and makes the forklift stronger and longer-lasting.



### BUILT TOUGH

The superior hydrostatic steering system is designed for high shock absorption, while the rugged frame, fully floating drive axle, and oil-cooled brakes ensure years of productivity, all day, every day.



### HYDRAULIC CONTROL

Experience the convenience of hydraulic control for lifting and tilting, providing efficient and precise handling for all your material transport needs.



### OIL-COOLED DISC BRAKES

Enjoy oil-cooled disc brakes for better braking and faster cycles, giving you the confidence to navigate and stop quickly. This enhancement significantly speeds up task completion and boosts overall productivity.



# COMFORT & CONTROLS



► **IMPROVED VISIBILITY**

Benefit from improved operator visibility in all working positions, thanks to a wider mast window, repositioned hydraulic hoses, and a flat bar-style overhead guard.



► **DELUXE SUSPENSION SEAT**

The deluxe suspension seat is designed for operator comfort, offering a larger seat back angle, extended seat travel length, and operator's weight resistance on the front side, allowing for multiple adjustments to create the most comfortable seating experience.



► **SPACIOUS OPERATOR COMPARTMENT**

The cab's ample leg-room, adjustable steering column, and ergonomic operator pedals ensure ease of entry and exit for the operator.



► **INTEGRATED INSTRUMENT PANEL**

The centralized and user-friendly instrument panel enhances operator efficiency by providing easy access to critical information such as fuel gauge, engine hour meter, engine oil pressure, coolant levels, and more, ensuring operators are constantly informed about the vehicle's performance.

► **CONVENIENCE TRAY**



This truck comes equipped with a handy convenience tray that stores refreshments, paperwork, small tools, and more, for more efficiency on the job.

► **EASY ACCESS**



This forklift features a low step height, facilitating easy and safe operator entry and exit, complemented by an easy entry grab bar and an anti-slip step plate.

► **OPTIMUM PEDAL SYSTEM**



Effortlessly control with automotive-style pedals—large accelerator, inching, and air-boosted power brake. Brake with ease, even when the engine is off, thanks to the spring-actuated parking brake handle.



# SAFETY IN EVERY MOVE

## ▶ ADVANCED PROTECTION FOR YOU AND YOUR OPERATION

Bobcat forklifts have safety embedded in their DNA. Packed with tons of features that protect your health and your investment, these machines give you peace of mind in every task, every day.

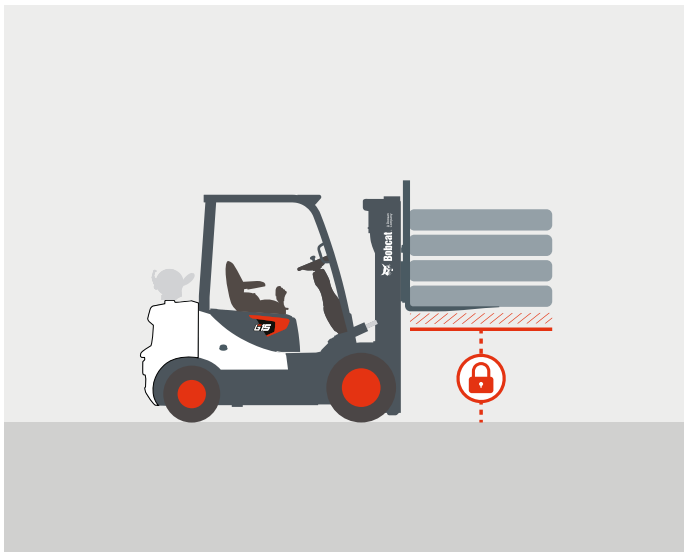
### ▶ OPERATOR SENSING SYSTEM

Our Operator Sensing System (OSS) ensures that, whenever the operator leaves the seat, the truck's travel and mast lifting functions stop automatically. This intelligent system prevents unintended forklift movements when the operator is not seated, enhancing safety in the workplace.



### ▶ MAST LOWERING INTERLOCK & TILT LOCK

The Mast Lowering Interlock & Tilt Lock system prevents unintentional lowering and tilting of the mast, safeguarding both the truck and the load while maintaining a secure work environment.



### ▶ BACKUP ALARM

The backup alarm emits a warning signal when the operator is driving in reverse, alerting those nearby and further ensuring safety in the workplace.



### ▶ REAR GRAB BAR

Boost your workplace safety with the help of a conveniently-placed rear grab bar that gives you a stable point to hold onto when operating the truck in reverse or when maneuvering in tight spaces. The grab bar also features a horn button – ready to be pressed with your thumb whenever needed.



### ▶ SEAT BELT INDICATOR

Enhance safety in your forklift operations with the seat belt indicator, to protect both your team and your business.



### ▶ PARKING BRAKE ALERT

Prioritize operator safety and safeguard against accidental movement with our parking brake warning system.



### ▶ BRIGHTER AND SAFER

Experience a brighter, safer, and more efficient workday with our front lights and combination lamp.



### ▶ REAR-VIEW MIRROR

The rear-view mirror provides more visibility, preventing accidents while reversing and avoiding collisions with objects and pedestrians, ensuring a safer work environment.





# BUILT TO LAST

► **A HERITAGE OF RELIABILITY**

The superior hydrostatic steering system is designed for high shock absorption, while the rugged frame, fully floating drive axle, and oil-cooled brakes ensure years of productivity, all day, every day.



**THERE'S NO TIME  
FOR DOWNTIME.  
STAND UP TO EVERY TASK  
THAT COMES YOUR WAY.  
DAY AFTER DAY.**

## 2 YEAR WARRANTY

► **WARRANTY**

Bobcat develops every machine to the highest standards of quality and durability. That's why our standard warranty provides 24 months or 2 000 operating hours (whichever occurs first) of coverage.



► **PROTECTION PLUS EXTENDED WARRANTY**

Enjoy total peace of mind with Protection Plus extended warranty. Providing the same level of protection as the standard warranty, Protection Plus also reflects different customer needs and expectations by offering a choice of durations and annual operating hours.

► **EXTENSIVE DEALER NETWORK**

You can rely on our network of dealers and service partners who are always ready to help you.

► **BOBCAT GENUINE PARTS**

Quality components delivered to our dealers guarantee that all of our equipment is built to last, withstand the toughest conditions and provide reliable performance.

MAIN SPECIFICATIONS

TECHNICAL DATA ACCORDING TO VDI 2198				
		G15S-5	G18S-5	G20SC-5
Drive		LPG		
Load capacity (kg)	Q	1 500	1 750	2 000
Load center (mm)	c	500		
Load distance: center of drive axle to fork (mm)	x	394		399
Wheelbase (mm)	y	1 400		
Service weight (kg)		2 800	3 010	3 170
Tread, front (mm)	b11	890		
Tread, rear (mm)	b12	910		
Tilt of mast / fork carriage forward / backward (°)	α/β	6 / 8		
Height, mast lowered (mm)	h1	1 885 – 2 835		
Free lift (mm)	h2	135 – 2 095		
Max. fork height (mm)	h3	2 700 – 6 000		
Height, mast extended (mm)	h4	4 055 – 7 055		4 060 – 7 060
Height of overhead guard (mm)	h6	2 170		
Height of seat (mm)	h7	1 005		
Length to forkface (mm)	l2	2 170	2 215	2 250
Overall width (mm)	b1/b2	1 070		
Fork dimensions (mm)	s/e/l	35 × 100 × 900		40 × 100 × 900
Ground clearance, loaded, below mast (mm)	m1	120		
Ground clearance, center of wheelbase (mm)	m2	150		
Aisle width for pallets 1 000 × 1 200 crossways (mm)	Ast	3 571	3 616	3 649
Aisle width for pallets 800 × 1 200 lengthways (mm)	Ast	3 771	3 816	3 849
External turning radius (mm)	Wa	1 977	2 022	2 050
Travel speed, loaded / unloaded (km/h)		18 / 19		
Lift speed, loaded /unloaded (mm/s)		630 / 650	620 / 650	610 / 650
Lowering speed, loaded / unloaded (mm/s)		500 / 450		
Max. drawbar pull, loaded (@ 1.6 km/h) (kg)		1 610	1 595	1 585
Max. gradeability, loaded / unloaded (%)		40.3	35.1	32.2
Service brake		19 / 20		
Engine manufacturer / type		HMC / G424I		
Engine power according to DIN ISO1585 (kW)		37.4		
Rated speed (min <sup>-1</sup> )		2 450		
Maximum torque (Nm)		158.2		
Number of cylinders/displacement (-/cm³)		4 / 2 359		
Sound level at the driver's ear according to EN 12 053 (dB(A))		80		

Note: Specification values quoted in this specification sheet have been rounded. Performance may vary depending on operating conditions. Products and specifications are subject to improvement and change without prior notice.

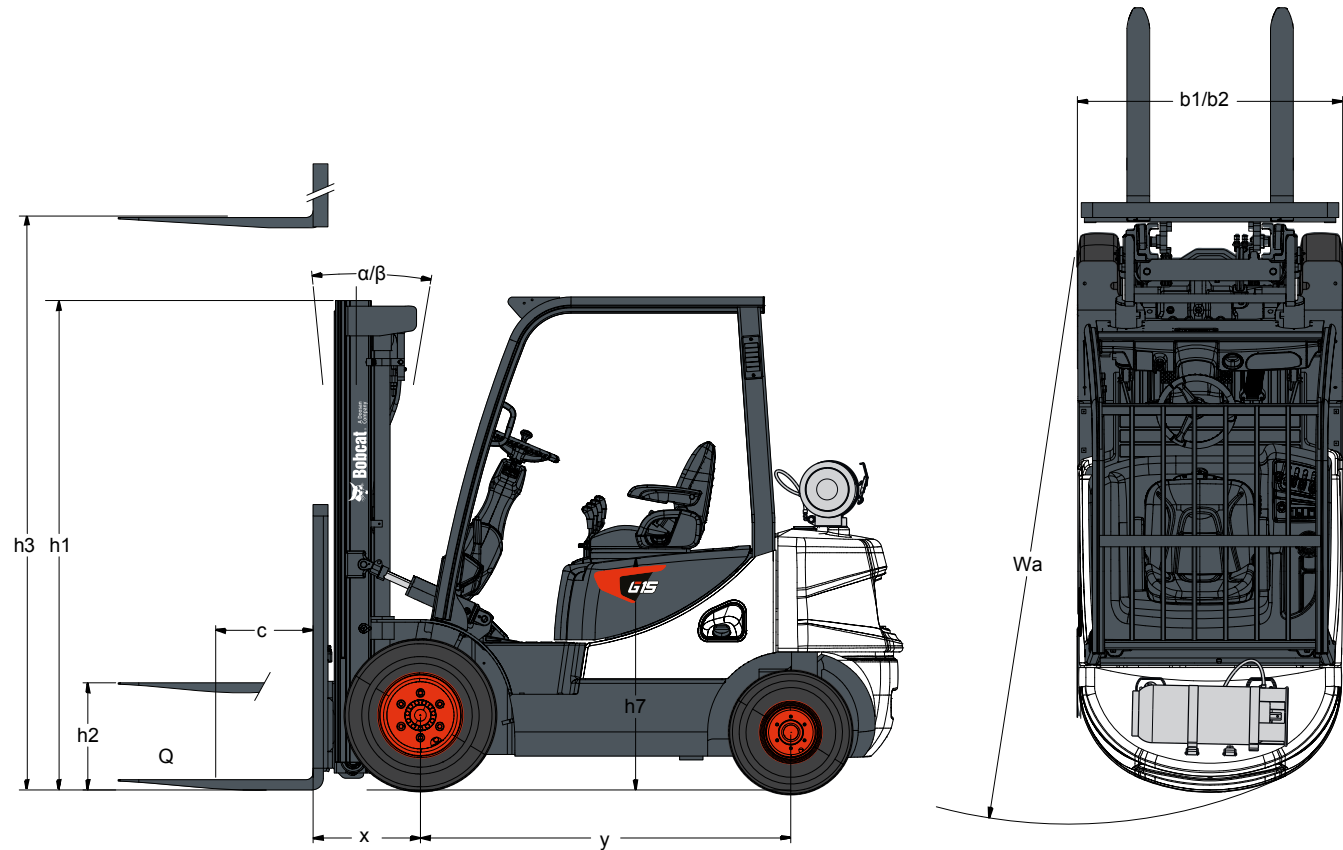
(1) Mast dimensions with load backrest refer to a range from the lowest to highest available mast.

STANDARD EQUIPMENT & OPTIONS

STANDARD EQUIPMENT & OPTIONS		STANDARD EQUIPMENT & OPTIONS	
SAFETY		PRODUCTIVITY	
Operator Sensing System	✓	High-powered, fuel-efficient engine	✓
Mast interlock – tilt, lift and lower	✓	Emission Regulation Stage V	✓
Excellent visibility	✓	Power steering	✓
Ground speed control	•	Auto tilt leveling	•
Additional rear light	•	Quick disconnect hose couplings	•
Blue safety rear light	•	RELIABILITY	
Strobe lights	•	Oil-cooled disc brakes (ODB)	✓
Autoshift controller	•	Hydrostatic steering system	✓
Backup alarm	•	Full floating drive axle	✓
ERGONOMICS		Increased cooling capacity	✓
Entry grip bar	✓	Dual element air cleaner	✓
Anti-slip step plate	✓	Rain cap	✓
Adjustable steering column	✓	Pre-cleaner	•
Convenience tray	✓	Radiator screen	•
Modular Cab – Type A, B, C	•	Vented side panel	•
Rear grab bar with horn	•	SERVICEABILITY	
Suspension seat (with armrest and heating)	•	Centralized fuse and relay (junction) box	✓
Low fuel indicator	•	Wide hood open angle	✓
Mono-pedal	•		

\*This list is based on factory data. Standard or optional can vary for specific countries.

- = option
- ✓ = standard
- = not available





# FINANCING OPTIONS

## 24, 36, OR 48 MONTH FINANCING\*

Take advantage of 24, 36 or 48 month financing programs starting from **0% interest** and improve your cashflow.

Ask your dealer for the financing offers available.

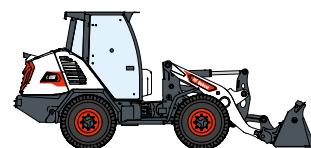
**340** MACHINES / **150** ATTACHMENT FAMILIES / **1** TOUGH ANIMAL



**SKID-STEER  
LOADERS**



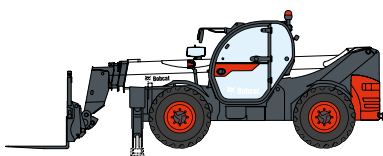
**COMPACT TRACK  
LOADERS**



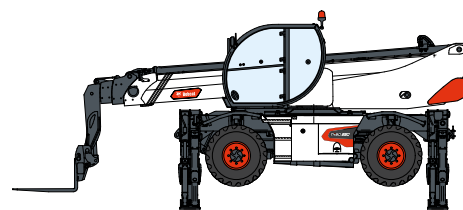
**COMPACT WHEEL  
LOADERS**



**FORKLIFTS**



**TELEHANDLERS**



**ROTARY TELEHANDLERS**



**LIGHT COMPACTION  
EQUIPMENT**



**COMPACT  
EXCAVATORS**



**COMPACT  
TRACTORS**



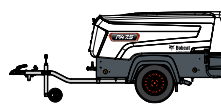
**SMALL ARTICULATED  
LOADERS**



**MINI TRACK  
LOADER**



**MOWERS**



**PORTABLE  
POWER**



**ATTACHMENTS**

**DOOSAN**

**Bobcat is a Doosan Company.** Doosan is a global leader in construction equipment, power & water solutions, engines, and engineering proudly serving customers and communities for more than a century. | Bobcat and the Bobcat logo are registered trademarks of Bobcat Company in the United States and various other countries. ©2024 Bobcat Company. All Rights Reserved.

[www.bobcat.com](http://www.bobcat.com)

©2024 BOBCAT B4502641-EN (02-24)



**Bobcat®**

\*Financing options may vary by country and dealer. Always ask your dealer about currently available financing options. Terms and conditions may apply.

Doosan Bobcat EMEA, U Kodelky 1810, 263 12 Dobříš, Czech Republic