



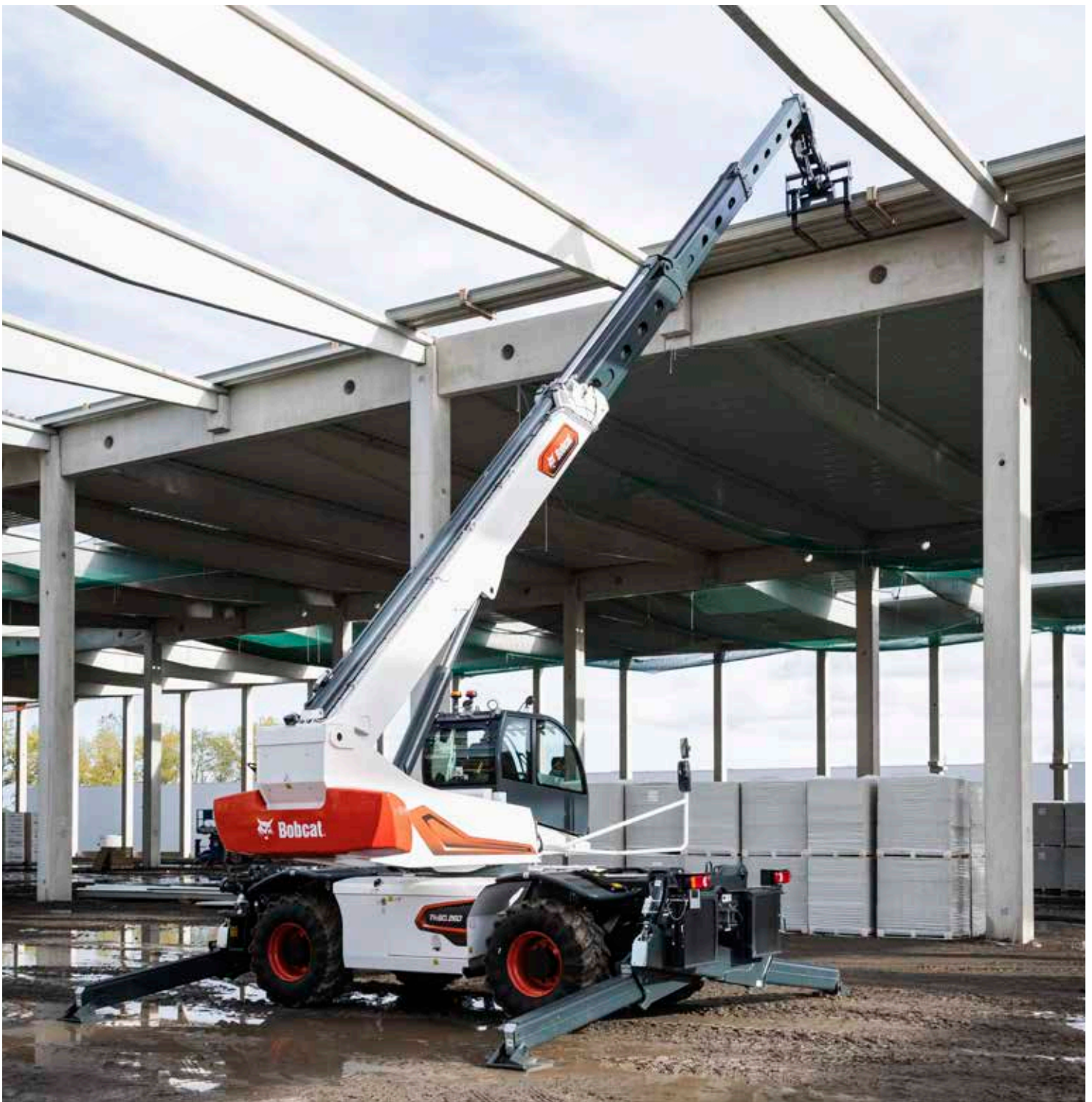
**Bobcat®**

*One Tough Animal.*

# ROTARY TELEHANDLERS

TR-Series

🌐 Europe



INTRODUCTION

ONE  
TOUGH  
ANIMAL



**BOBCAT'S HISTORY**  
In 1958, the Melroe Manufacturing Company introduced a compact front-end loader that quickly evolved into the M400, the world's first true skid steer loader. The company soon adopted what became the world-famous 'Bobcat' brand – and its success paved the way for the global compact equipment industry we now know.

**NEVER-ENDING INNOVATION**  
Today, Bobcat's EMEA headquarters in Dobříš, Czech Republic, serves as a hub for innovation. Here, a manufacturing plant produces around 25 000 machines annually for EMEA customers and global export. The site is also home to the Bobcat Innovation Centre, where rigorous testing and product development take place using advanced facilities like climate and anechoic chambers.



**BOBCAT TODAY**  
With over 60 years of manufacturing experience and a commitment to ongoing innovation, Bobcat has delivered millions of machines to the market. Known for their high performance, reliability, and unparalleled comfort, the diverse lineup caters to a wide variety of applications. Whether it's landscaping, snow removal, construction, demolition, or roadwork, Bobcat machines empower users to accomplish more.

**OUR MISSION**  
We empower operators to accomplish more, while working in the toughest conditions and tightest situations. When our customers have the will, we provide the way.





# BUILT TO PERFORM AT 360°

## ► POWERFUL AND STABLE

By adding cutting-edge technology to Bobcat's Rotary Telehandlers, we have created the ultimate tool for even the most complex handling jobs. Working at height has never been so efficient, comfortable and safe.



## ► A NEW LEVEL OF PRODUCTIVITY

Unlock unparalleled productivity with our Rotary Telehandlers. Enhanced capabilities, a new touchscreen display, and overall versatility allow you to do more every day.

**P. 8**



## ► WORK WITH EASE

Experience elevated comfort with our Rotary Telehandlers. The redesigned cab offers a sleek design, ample space, and convenient features for an even better operator experience.

**P. 20**



## ► SAFETY FIRST

Enjoy a safer working environment with multilingual warning banners, an automatic rear camera display when in reverse, and a tire leveling feature.

**P. 19**



## ► STAY PRODUCTIVE

Boost uptime with our Rotary Telehandlers. Featuring improved fuse access and diagnostic socket accessibility, these machines enable quick and hassle-free maintenance.

**P. 9**



# PERFORMANCE

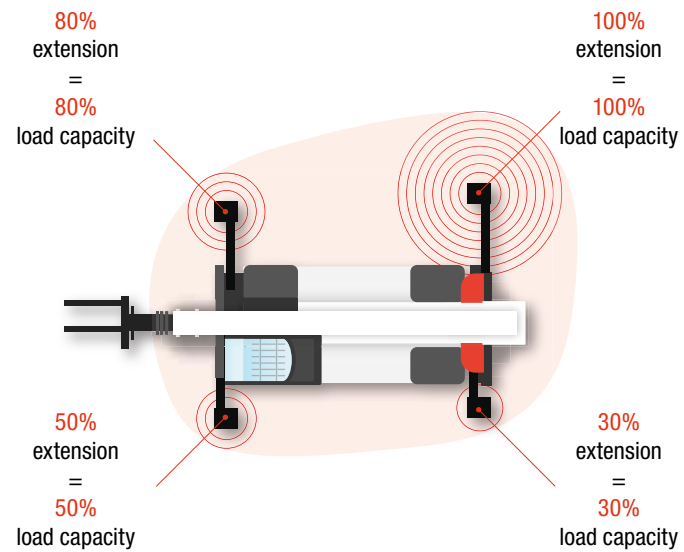
## ▶ INTELLIGENT STABILIZATION

Stabilization is optimized thanks to ground pressure detection, one-button auto-leveling, and a self-adapting working envelope to independently set the lifting capacity of each stabilizer.



## ▶ SMART OPERATING

From the moment it starts moving, the machine's electronic management takes control, automatically adjusting the engine speed and the load-sensing hydraulic system. This allows you to focus on your top priority: performing your job with absolute precision and safety.



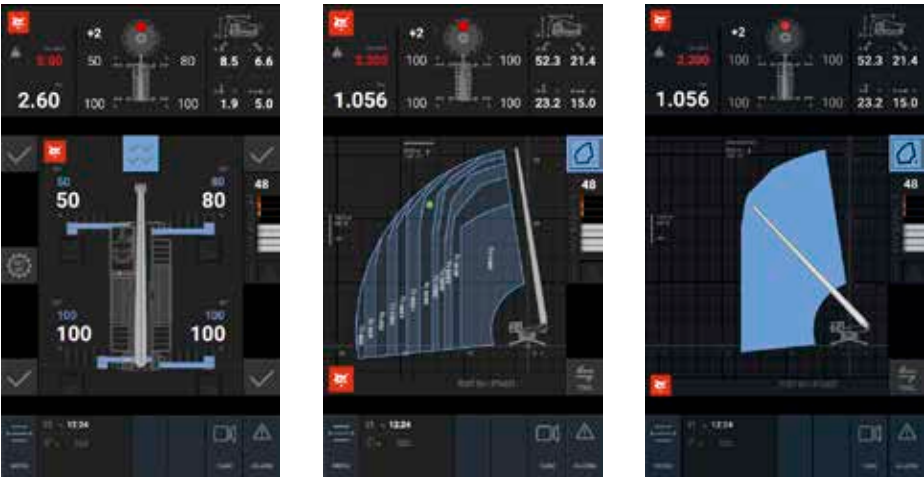
## ▶ FRAME LEVELING ON TIRES

Achieve greater stability on diverse terrains with our standard tire leveling system. This intelligent feature detects machine inclination and allows compensation only in the correct direction, reducing the risk of making things worse. Count on this reliable feature for enhanced operator safety and machine stability.



## ▶ NEW LOAD CHARTS

Experience a new level of productivity with an updated overview of your machine and its functions displayed conveniently on your in-cab display. Choose from a variety of load charts that provide real-time information about the handled load, position of the stabilizers, safe working area, and more.



READ MORE INFORMATION ABOUT THE UPDATED LOAD CHARTS ON PAGE 19



# UNBEATABLE CAB EXPERIENCE



## FIRST-CLASS COMFORT

Step into our modernized cab, which offers advanced features, including an air-filtered and pressurized environment for optimal operator comfort. With spacious interiors, convenient access, and well-positioned LED lights, our machines deliver the best performance without compromising comfort.



## PANORAMIC PERFECTION



Enhance the operator experience with our extended Ultrawide Panoramic Windscreen, offering an expansive view for improved visibility.

## COMFORT COMES STANDARD



Enjoy superior comfort with our standard head rest and ergonomic seat, keeping operators comfortable even during extended working hours.

## INTUITIVE OPERATION



Stabilization and frame leveling controls are grouped together on the console along the side window.

\*except TR50.180



# SAFETY

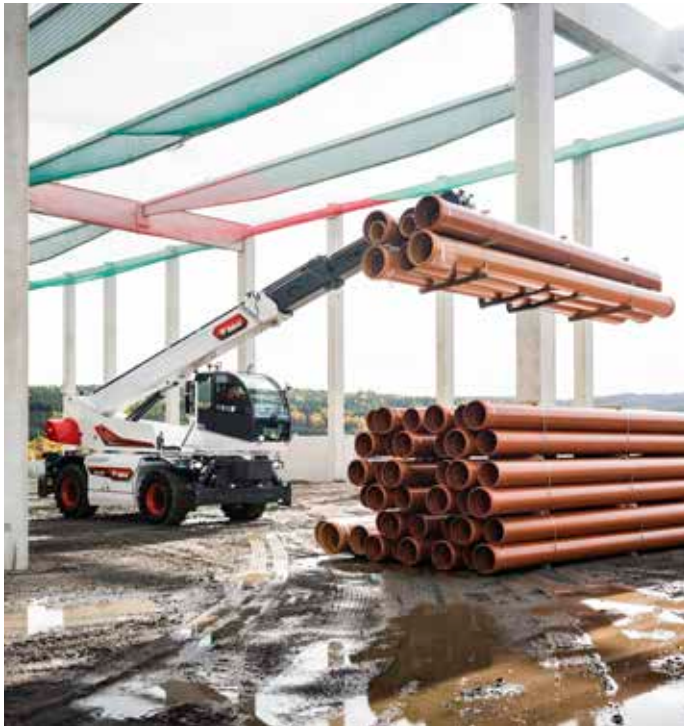
## ▶ CUSTOMIZED CONTROL

Take command of your job site with our advanced safety features. Our machines empower operators to define virtual barriers, limiting both working zones and speeds. This cutting-edge technology ensures maximum control of your machine.



## ▶ SAFETY FOR ALL

Enhance communication and safety on your job site with our advanced warning banners. Displayed in 14 languages, these banners ensure that crucial safety information is accessible to every operator, promoting a secure and inclusive work environment.



## ▶ STREAMLINED OPERATIONS

Ensure a safer and more convenient work environment by opting for the automatic activation of the rear-view camera when traveling in reverse. This smart feature enhances visibility and streamlines operations.



## ▶ SAFETY ON ANY TERRAIN

Experience maximized stability, thanks to our automatic tire leveling feature. This feature prevents any actions leading to potential rollovers, prioritizing operator safety in challenging terrains.





# STRONG AND RELIABLE

## ► BUILT TO LAST

Designed to withstand the toughest construction jobs, our equipment features a welded monobloc frame, hydraulic hoses fully enclosed within the boom, and heavy-duty axles. Constructed from high-tensile steel, the boom is exceptionally sturdy and rigid while remaining lightweight, bolstering load capacity and minimizing flex.

## ► PROTECTED FROM THE ELEMENTS

The 24V electric circuit is protected with IP67-rated shielding against water and dust. Additionally, Bobcat's CAN Bus technology reduces wiring for enhanced reliability.

## ► STANDARD WARRANTY

Bobcat develops every machine to the highest standards of quality and durability. That's why our standard warranty provides 24 months or 2 000 operating hours (whichever occurs first) of coverage.

**THERE'S NO TIME  
FOR DOWNTIME.  
STAND UP TO THE  
HARSHEST CONDITIONS,  
DAY AFTER DAY.**



## ► PROTECTION PLUS EXTENDED WARRANTY

Enjoy total peace of mind with a Protection Plus® extended warranty. Providing the same level of protection as the standard warranty, Protection Plus also reflects different customer needs and expectations by offering a choice of durations and annual operating hours. You can benefit from the coverage for up to 5 years or 5 000 engine hours, according to your needs. Protection Plus is also transferrable – so it will likely increase your machine's resale value.



## ► BOBCARE

A long-running machine starts with proper planned maintenance, which also helps protect against repair costs and unplanned failures when you're counting on your machine to work.

- Avoid risk by preventing major repairs and complete failures.
- Accomplish more by reducing downtime and increasing your productivity and profitability.



# CHOOSE YOUR ANIMAL

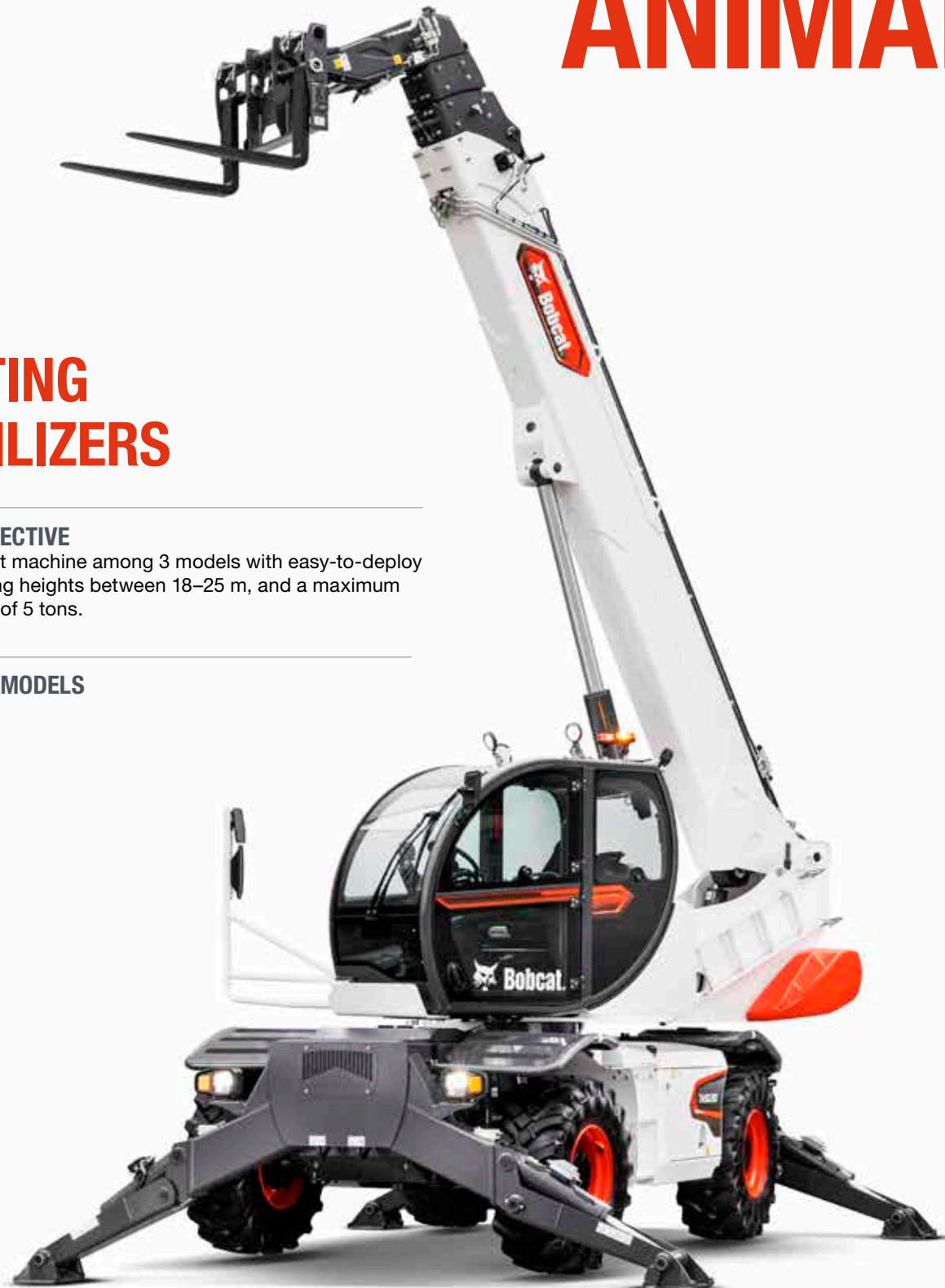
## PIVOTING STABILIZERS

### ► SIMPLY EFFECTIVE

Find the perfect machine among 3 models with easy-to-deploy stabilizers, lifting heights between 18–25 m, and a maximum lifting capacity of 5 tons.

### ► AVAILABLE MODELS

- TR50.180
- TR50.210
- TR50.250



## SCISSOR STABILIZERS

### ► CUSTOMIZED STABILIZATION

Choose from 6 models featuring powerful, versatile telescopic scissor stabilizers with higher ground clearance, enabling lifting heights ranging from 22 to 39 meters and a maximum lift capacity between 6 and 8 tons. The stabilizers offer various types of stabilization – including compact, partial, or full (to achieve the maximum working envelope) – and come with load charts adapted to the position of each stabilizer.

### ► AVAILABLE MODELS

- TR60.220
- TR60.260
- TR60.310
- TR80.270
- TR80.350
- TR80.390





STANDARD EQUIPMENT & OPTIONS

	TR50.180	TR50.210	TR50.250	TR60.220	TR60.260	TR60.310	TR80.270	TR80.350	TR80.390
FRAME AND TELESCOPIC BOOM									
Quick fit carriage with manual attachment lock	✓	✓	✓	✓	✓	✓	✓	✓	✓
Rear-view Camera	✓	✓	✓	✓	✓	✓	✓	✓	✓
Pallet Fork Frame Floating, 1.3 m wide, forks included	✓	✓	✓	✓	✓	✓	✓	✓	✓
Auxiliary hydraulic line on boom head and return line to hydraulic tank	✓	✓	✓	✓	✓	✓	✓	✓	✓
Automatic RFID tools recognition system	✓	✓	✓	✓	✓	✓	✓	✓	✓
Man platform ready and electric emergency pump	✓	✓	✓	✓	✓	✓	✓	✓	✓
Winch ready	✓	✓	✓	✓	✓	✓	✓	✓	✓
Heavy-duty axles with epicyclic reduction gears, oil immerse brakes	✓	✓	✓	✓	✓	✓	✓	✓	✓
Rear axles oscillating and steering with hydraulic locking	✓	✓	✓	✓	✓	✓	✓	✓	✓
Towing hook	✓	✓	✓	✓	✓	✓	✓	✓	✓
Frame leveling ±8°	✓	✓	✓	✓	✓	✓	✓	✓	✓
Complete road lights (front & rear)	✓	✓	✓	✓	✓	✓	✓	✓	✓
Right and left side mirrors	✓	✓	✓	✓	✓	✓	✓	✓	✓
CAB AND MAIN FUNCTIONS									
Cab with full glass window door	✓	✓	✓	✓	✓	✓	✓	✓	✓
Full tinted glass	✓	✓	✓	✓	✓	✓	✓	✓	✓
Pressurized cab, 100% air filtration	✓	✓	✓	✓	✓	✓	✓	✓	✓
ROPS/FOPS operator cab	✓	✓	✓	✓	✓	✓	✓	✓	✓
Automatic parking brake	✓	✓	✓	✓	✓	✓	✓	✓	✓
Roof window wiper	✓	✓	✓	✓	✓	✓	✓	✓	✓
Front wipers with washer	✓	✓	✓	✓	✓	✓	✓	✓	✓
Rotating beacon	✓	✓	✓	✓	✓	✓	✓	✓	✓
Adjustable steering column	✓	✓	✓	✓	✓	✓	✓	✓	✓
Heating, demisting and ventilation	✓	✓	✓	✓	✓	✓	✓	✓	✓
Air conditioning (HVAC)	✓	✓	✓	✓	✓	✓	✓	✓	✓
Back-up alarm	✓	✓	✓	✓	✓	✓	✓	✓	✓
Bluetooth radio, microphone & loudspeakers	✓	✓	✓	✓	✓	✓	✓	✓	✓
Mechanical suspension seat	✓	✓	✓	✓	✓	✓	✓	✓	✓
7" touch screen	✓	✓	✓	-	-	-	-	-	-
12" touch screen	-	-	-	✓	✓	✓	✓	✓	✓
Jog shuttle	✓	✓	✓	✓	✓	✓	✓	✓	✓
2 multifunctional joysticks with proportional controls and forward/reverse drive	✓	✓	✓	✓	✓	✓	✓	✓	✓
Load moment control system with dynamic load chart on touchscreen display	✓	✓	✓	✓	✓	✓	✓	✓	✓
Auto idle	✓	✓	✓	✓	✓	✓	✓	✓	✓
Auto-leveling system on stabilisers	✓	✓	✓	✓	✓	✓	✓	✓	✓
3 steering modes (2WS / 4WS / CRAB) with semi-automatic wheel realignment	✓	✓	✓	✓	✓	✓	✓	✓	✓
Rear axle lock indicator	✓	✓	✓	✓	✓	✓	✓	✓	✓
Front and rear wheels alignment indicator	✓	✓	✓	✓	✓	✓	✓	✓	✓
24 V Electric socket	✓	✓	✓	✓	✓	✓	✓	✓	✓
CAN Bus technology with auto-diagnostic system	✓	✓	✓	✓	✓	✓	✓	✓	✓

• = option    ✓ = standard    -- = not available

	TR50.180	TR50.210	TR50.250	TR60.220	TR60.260	TR60.310	TR80.270	TR80.350	TR80.390
CAB AND MAIN FUNCTIONS									
Load sensing piston pump 90 l/min at 350 bar	✓	-	-	-	-	-	-	-	-
Load sensing piston pump 105 l/min at 350 bar	-	✓	✓	-	-	-	-	-	-
Load sensing piston pump 130 l/min at 350 bar	-	-	-	✓	✓	-	-	-	-
Load sensing piston pump 160 l/min at 350 bar	-	-	-	-	-	✓	✓	✓	✓
Electro proportional main valve with flow sharing	✓	✓	✓	✓	✓	✓	✓	✓	✓
Continuous rotation (360°)	✓	✓	✓	✓	✓	✓	✓	✓	✓
High precision slewing drive	-	-	-	✓	✓	✓	✓	✓	✓
Hydrostatic transmission with electronically controlled variable displacement pump; variable displacement motor 2-speed gear box (turtle/rabbit)	✓	✓	✓	✓	✓	✓	✓	✓	✓
25 km/h max drive speed	✓	-	-	-	-	-	-	-	-
40 km/h max drive speed	-	✓	✓	✓	✓	✓	✓	✓	✓
Standard tires – set of 4 × 445/65 R19,5"	✓	-	-	-	-	-	-	-	-
Standard tires – set of 4 × 445/65 R22,5"	-	✓	✓	✓	✓	✓	✓	✓	✓
Turbo-charged engine – Deutz TCD 3.6 L4 Stage V – 75 hp / 405 Nm	✓	-	-	-	-	-	-	-	-
Turbo-charged engine – Deutz TCD 3.6 L4 Stage V – 136 hp / 500 Nm	-	✓	✓	✓	✓	-	-	-	-
Turbo-charged engine – Volvo TAD 582 VE Stage V – 218 hp / 925 Nm	-	-	-	-	-	✓	✓	-	-
Turbo-charged engine – Volvo TAD 583 VE Stage V – 238 hp / 975 Nm	-	-	-	-	-	-	-	✓	✓
Battery disconnection (inside engine compartment)	✓	✓	✓	✓	✓	✓	✓	✓	✓
2-year warranty or 2 000 hours (refer to the Bobcat standard warranty policy for terms and conditions)	✓	✓	✓	✓	✓	✓	✓	✓	✓
Telemetry system	✓	✓	✓	✓	✓	✓	✓	✓	✓

• = option    ✓ = standard    -- = not available

PERSONALIZE YOUR MACHINE

We all want to add a specific functionality or a personal touch to our machine. Choose from a comprehensive list of options and customize your Rotary Telehandler to your heart’s content!



Front-view camera



Rear-view camera



Remote control with display



Camera display



Hydraulic attachment lock



High comfort air suspension seat with head rest



LED work lights



Stabilizers' plastic pads



Ladder



Wheel wedges



Sun visor



Radio DAB

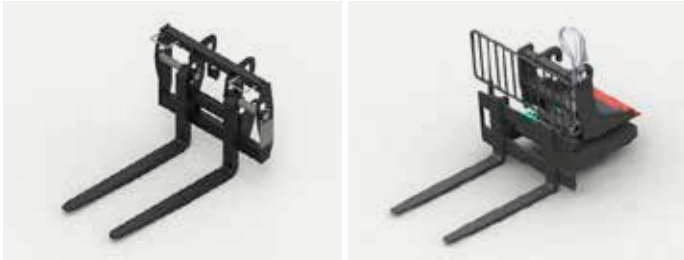


VERSATILITY

THE CAPABILITY TO DO MORE

Be more efficient with Bobcat attachments, and maximize the versatility of Bobcat Rotary Telehandlers, which are designed to excel in handling and lifting materials, and elevating personnel.

PALLET FORKS



Floating pallet fork frames      Rotating pallet fork frame

BUCKETS



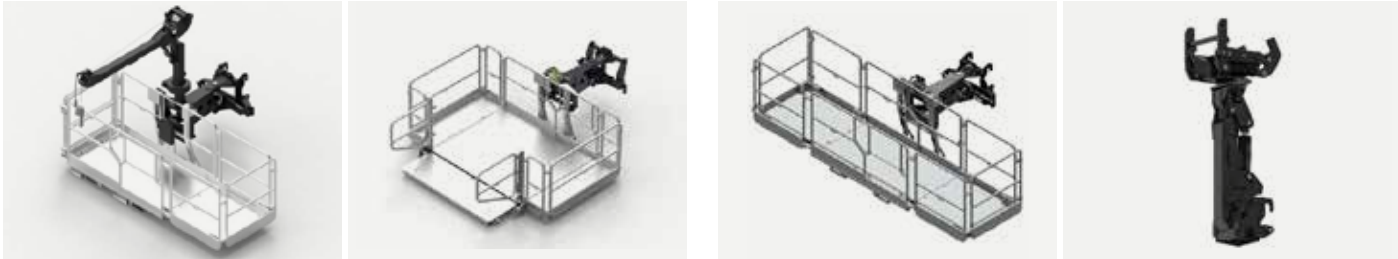
General purpose buckets      Waste bucket

HOOKS, JIBS, WINCHES



Crane jibs      Winches      Extension jibs      Jibs with winch

SPECIAL APPLICATIONS



Extendable rotating platform equipped with a winch      Roofer Extendable rotating platform      Extendable rotating platform      Rib handler



ADVANCED CONTROLS

SMART AND INTUITIVE

Easily monitor and manage vital functions on the large touchscreen, included as standard. Seamlessly navigate through 5 menu pages using touch controls or the jog shuttle.

DRIVE PAGE



Choose the appropriate steering control and monitor vital speed and engine information.

LIMIT PAGE



The limit page allows operators to secure the working area by setting virtual walls on each side, in front, and above. If needed, the operator can also adjust all boom and rotation speeds.

STABILIZATION PAGE



Effortlessly control all 4 stabilizers simultaneously or independently and check their positions at a glance. With the automatic leveling system, setup is quick and easy once the stabilizers make contact with the ground.

WORK PAGE



The work page displays the paired attachment, which is automatically recognized by the RFID system. A dynamic load chart shows the load moving along with the telescopic boom movements. The operator can quickly read the actual load weight and check the maximum lifting capacity in this position.

CONTROL PAGE



Access all utility controls on 1 screen: ventilation, heating, AC, lights, radio control, turret lock, etc.



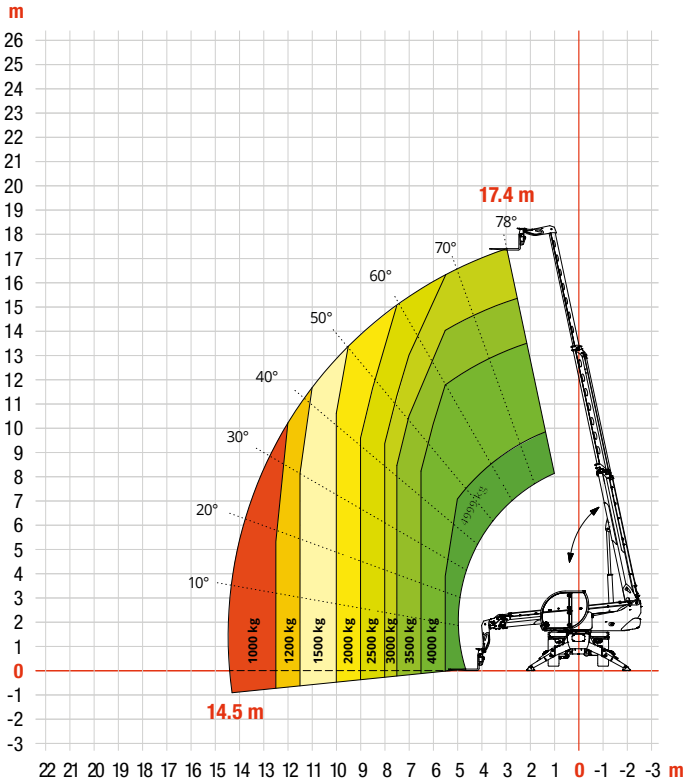


SPECIFICATIONS

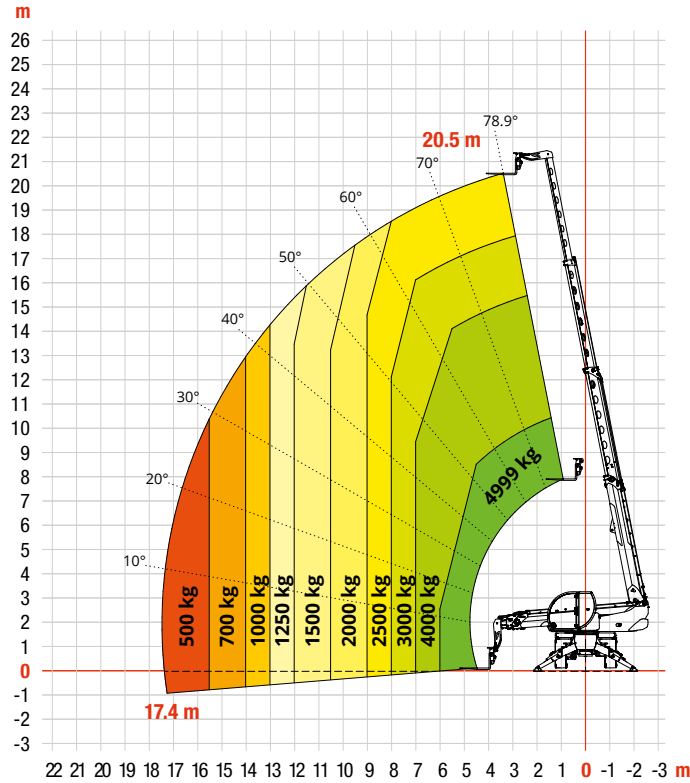
SPECIFICATIONS				
	TR50.180		TR50.210	TR50.250
MACHINE MODEL				
Maximum lifting capacity	4 999 kg (center of gravity 500 mm)			
Maximum reach	14.5 m	17.4 m		19 m
Maximum lifting height	17.4 m	20.5 m		24.6 m
Rotation	360° (continuous)			
STABILIZERS				
Type	Pivoting stabilizers			
Commands	Independent or combined			
ENGINE				
Type	Deutz TCD 3.6 L4 Stage V			
Rated power	55 kW @ 2 200 rpm	100 kW @ 2 200 rpm		
Maximum torque	405 Nm a 1 300 rpm	500 Nm @ 1 600 rpm		
Displacement	3.6 l			
Cylinders	4 in line			
Engine configuration	Turbocharged direct injection diesel			
Cooling system	Water – Intercooler			
Number of batteries	2 × 12 V			
Battery type	SHD			
Batteries capacity	1 200 A-190 Ah			
TRANSMISSION				
Type	Hydrostatic			
Model	Danfoss / Rexroth			
Maximum pressure	480 bar			
Displacement	Electronically controlled variable displacement pump, variable displacement motor			
Gearbox	Dropbox, 2 speeds forward-reverse			
AXLES AND BRAKES				
Type	Axles with planetary gearboxes			
Front axle	Oscillating, steering with leveling ± 8°			
Rear axle	Oscillating and steering with hydraulic locking			
Number of steering wheels	4WS			
Steering types	2WS / 4WS / Crab			
Service brake	Hydraulically operated wet multi-disk brakes on each axle			
Parking brake	Hydraulic with negative action			
Tire sizes	445/65 R19.5	445/65 R22.5		
PERFORMANCE				
Max. travel speed	25 km/h	40 km/h		
Drawbar pull	51 kN	72 kN		
Gradeability	51%	45%		
Turning circle (at forks)	6 060 mm	5 780 mm		
WEIGHTS				
Total unladen	14 400 kg	15 900 kg		
Front axle unladen (boom retracted and lowered)	6 300 kg	8 800 kg		
Rear axle unladen (boom retracted and lowered)	8 100 kg	7 100 kg		
TANK AND SYSTEM CAPACITIES				
Diesel fuel tank	175 l			
AdBlue	–	10 l		
Hydraulic fluid	165 l			
Engine oil	9 l			
Cooling liquid	20 l			
HYDRAULIC CIRCUIT FOR MOVEMENTS				
Circuit type	Load sensing			
Service pump	Variable displacement piston pump	Danfoss / Casappa – Variable displacement		
Max. hydraulic capacity	90 l/min	105 l/min		
Max. working pressure	350 bar			
Distributor for boom and turret movements	Danfoss – SIL 2 electro-proportional valve			
Movements control	2 no. two-axis Danfoss joysticks with deadman safety device	2 no. two-axis Danfoss joysticks with deadman safety device, managed via CAN bus		

LOAD CHARTS

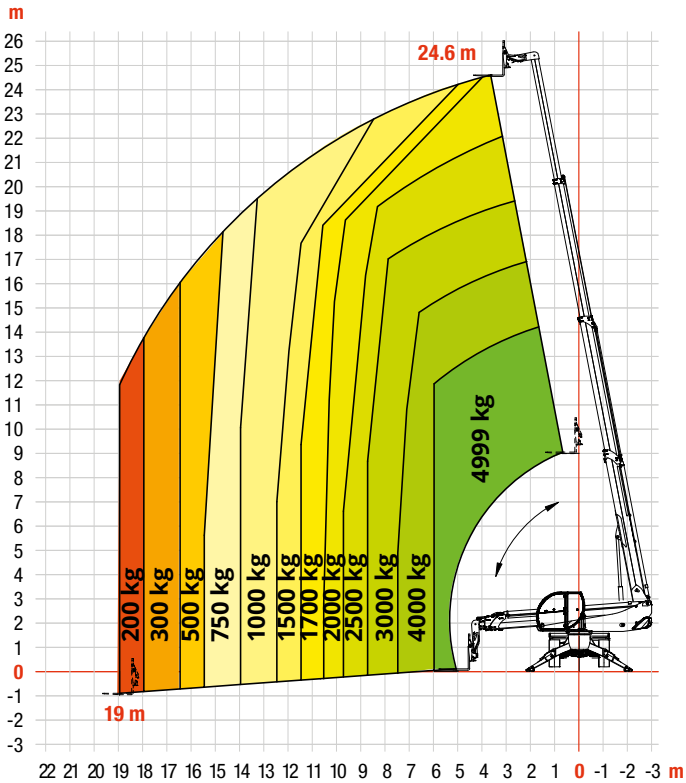
TR50.180



TR50.210



TR50.250



Load charts with load center at 500 mm up to 4 999 kg rated capacity and 600 mm above.

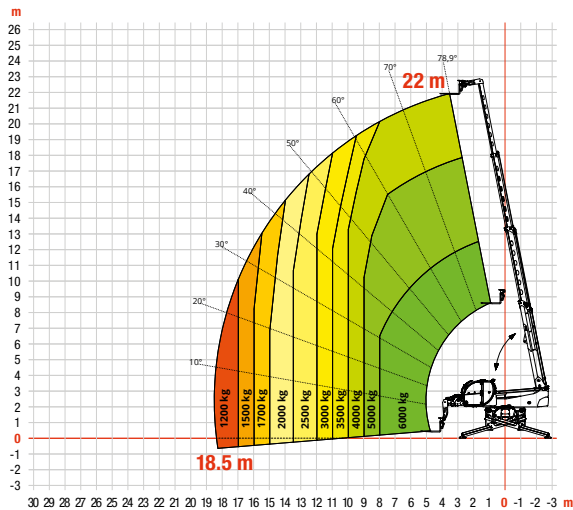


SPECIFICATIONS

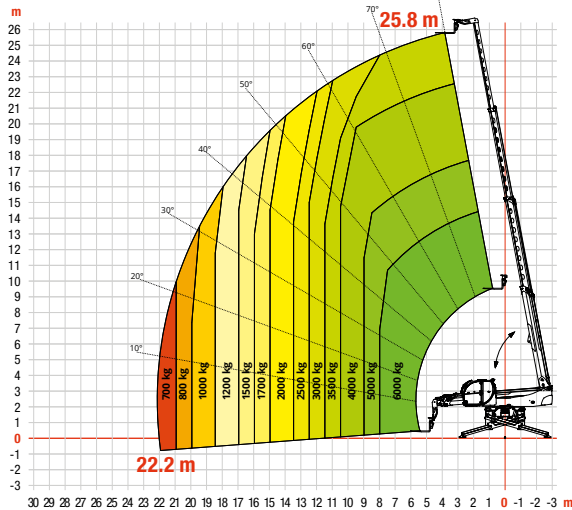
SPECIFICATIONS								
	TR60.220		TR60.260		TR60.310	TR80.270	TR80.350	TR80.390
MACHINE MODEL								
Maximum lifting capacity	6 000 kg					8 000 kg		
Maximum reach	18.5 m		22.2 m		26.9 m	23.1 m	27 m	
Maximum lifting height	22 m		25.8 m		30.8 m	26.6 m	34.9 m	38.9 m
Rotation	360° (continuous)							
STABILIZERS								
Type	Scissor stabilisers with single telescopic extension							
Controls	Independent or combined							
ENGINE								
Type	Deutz TCD 3.6 L4 Stage V				Volvo TAD 582 VE Stage V		Volvo TAD 583 VE Stage V	
Rated power (kW @ rpm)	100 @ 2 200				160 @ 2 300		175 @ 2 300	
Maximum torque (Nm @ rpm)	500 @ 1 600				925 @ 11 380		975 @ 11 380	
Displacement	3 620 cm³				5 130 cm³			
Cylinders	4 in line							
Engine configuration	Turbocharged direct injection diesel							
Cooling system	Water – intercooler							
Numbers of batteries	2 × 12 V							
Battery type	SHD							
Batteries capacity	1 200 A-190 Ah							
TRANSMISSION								
Type	Hydraulic							
Model	Danfoss / Rexroth							
Maximum pressure	480 bar							
Displacement	Electronically controlled variable displacement pump							
Gearbox	2 speeds forward-reverse							
AXLES AND BRAKES								
Type	Axles with planetary gearboxes							
Front axle	Oscillating and steering with leveling, ±8°							
Rear axle	Oscillating and steering with hydraulic lock							
Number of steering wheels	4WS							
Steering types	2WS / 4WS / Crab							
Service brake	Hydraulically operated wet multi-disk brakes on each axle							
Parking brake	Hydraulic with negative action							
Tire sizes	445/65 R22.5							
PERFORMANCE								
Max. travel speed	40 km/h							
Drawbar pull	68 kN				89 kN	88 kN	152 kN	
Gradeability	34%				41%	40%	61.7%	65%
Turning circle (at forks)	6 080 mm	6 670 mm			6 730 mm	6 940 mm	7 000 mm	6 970 mm
WEIGHTS								
Total unladen	19 100 kg		19 600 kg		22 600 kg	22 500 kg	24 000 kg	
Front axle unladen (boom retracted and lowered)	8 300 kg		8 550 kg		10 400 kg	9 900 kg	12 000 kg	
Rear axle unladen (boom retracted and lowered)	10 800 kg		11 050 kg		12 000 kg	12 600 kg	12 000 kg	
TANK AND SYSTEM CAPACITIES								
Diesel fuel tank	240 l				270 l			
AdBlue	10 l	–	10 l	–	40 l	40 l	40 l	
Hydraulic fluid	130 l				160 l	160 l	240 l	220 l
Engine oil	9 l				16 l			
Cooling liquid	20 l				40 l			
HYDRAULIC CIRCUIT FOR MOVEMENTS								
Circuit type	Load sensing							
Service pump	Variable displacement piston pump							
Max. hydraulic capacity	130 l/min				160 l/min			
Max. working pressure	350 bar							
Distributor for boom and turret movements	SIL 2 electro-proportional valve							
Movements control	2 two-axis Danfoss joysticks with deadman safety device							

Load charts with load center at 500 mm up to 4 999 kg rated capacity and 600 mm above.

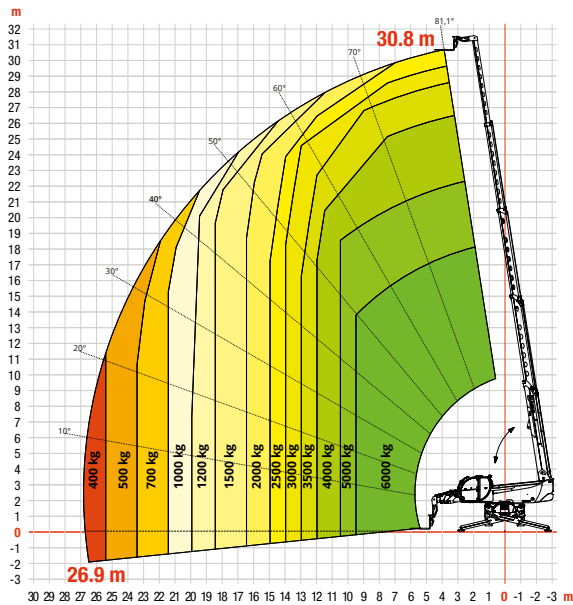
TR60.220



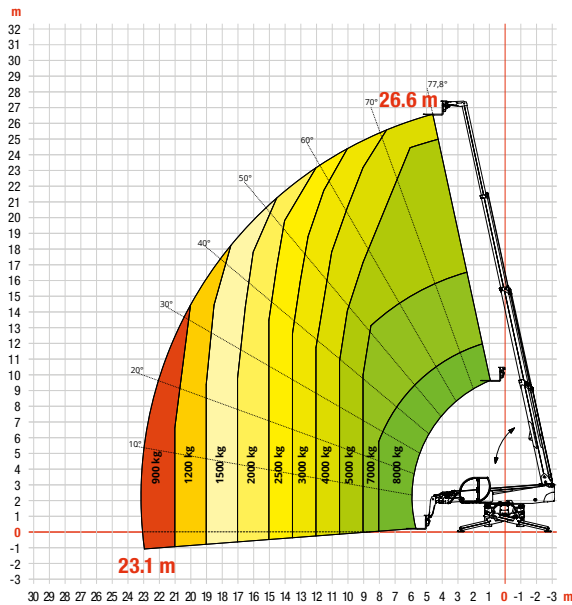
TR60.260



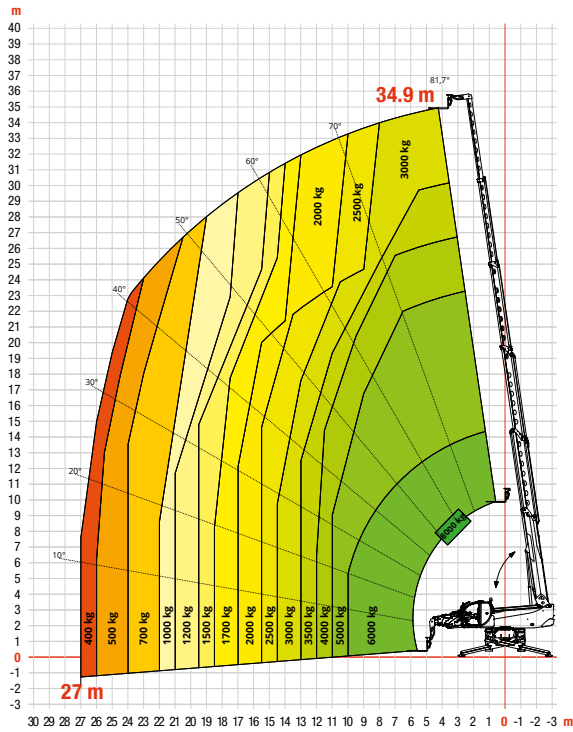
TR60.310



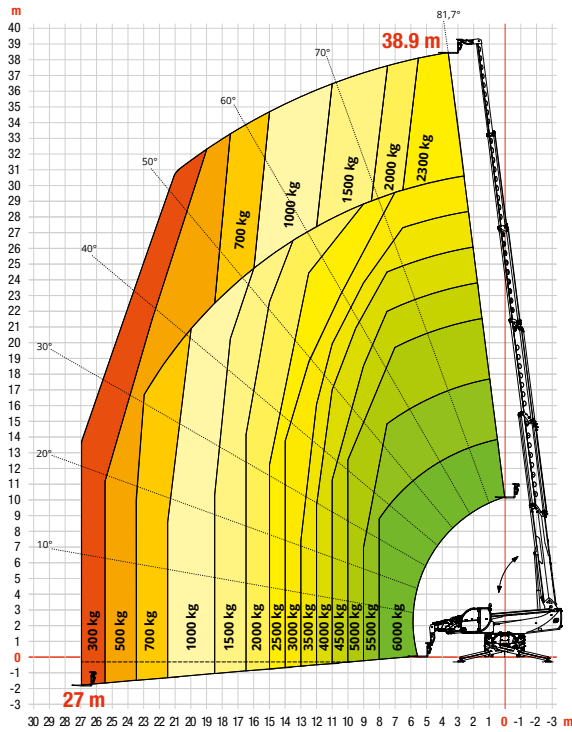
TR80.270



TR80.350



TR80.390





# FINANCING OPTIONS

## 24, 36, OR 48 MONTH FINANCING\*

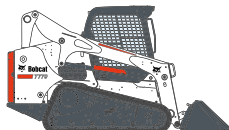
Take advantage of 24, 36 or 48 month financing programs starting from **0% interest** and improve your cashflow.

Ask your dealer for the financing offers available.

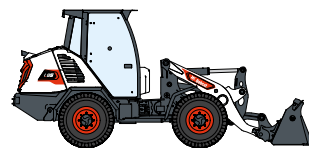
**340** MACHINES / **150** ATTACHMENT FAMILIES / **1** TOUGH ANIMAL



**SKID-STEER  
LOADERS**



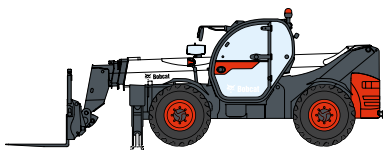
**COMPACT TRACK  
LOADERS**



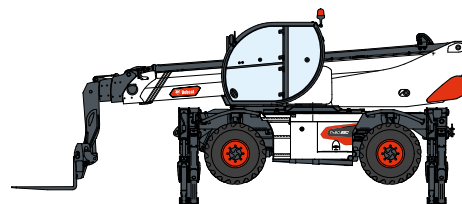
**COMPACT WHEEL  
LOADERS**



**FORKLIFTS**



**TELEHANDLERS**



**ROTARY TELEHANDLERS**



**LIGHT COMPACTION  
EQUIPMENT**



**COMPACT  
EXCAVATORS**



**COMPACT  
TRACTORS**



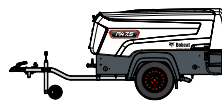
**WAREHOUSE  
EQUIPMENT**



**MINI TRACK  
LOADER**



**MOWERS**



**PORTABLE  
POWER**



**ATTACHMENTS**

**DOOSAN**

**Bobcat is a Doosan Company.** Doosan is a global leader in construction equipment, power & water solutions, engines, and engineering proudly serving customers and communities for more than a century. | Bobcat and the Bobcat logo are registered trademarks of Bobcat Company in the United States and various other countries. ©2024 Bobcat Company. All Rights Reserved.

[www.bobcat.com](http://www.bobcat.com)

©2024 BOBCAT B4502770-EN (03-24)



**Bobcat®**

\*Financing options may vary by country and dealer. Always ask your dealer about currently available financing options. Terms and conditions may apply.

Doosan Bobcat EMEA, U Kodelky 1810, 263 12 Dobříš, Czech Republic